



Shuswap Trails 17.5th Annual 2022 Progress Report

Reporting on 2021 Date – 2022 in Progress

January 10, 2023

Presented by The Shuswap Trail Alliance

Weytkp... (Hello)

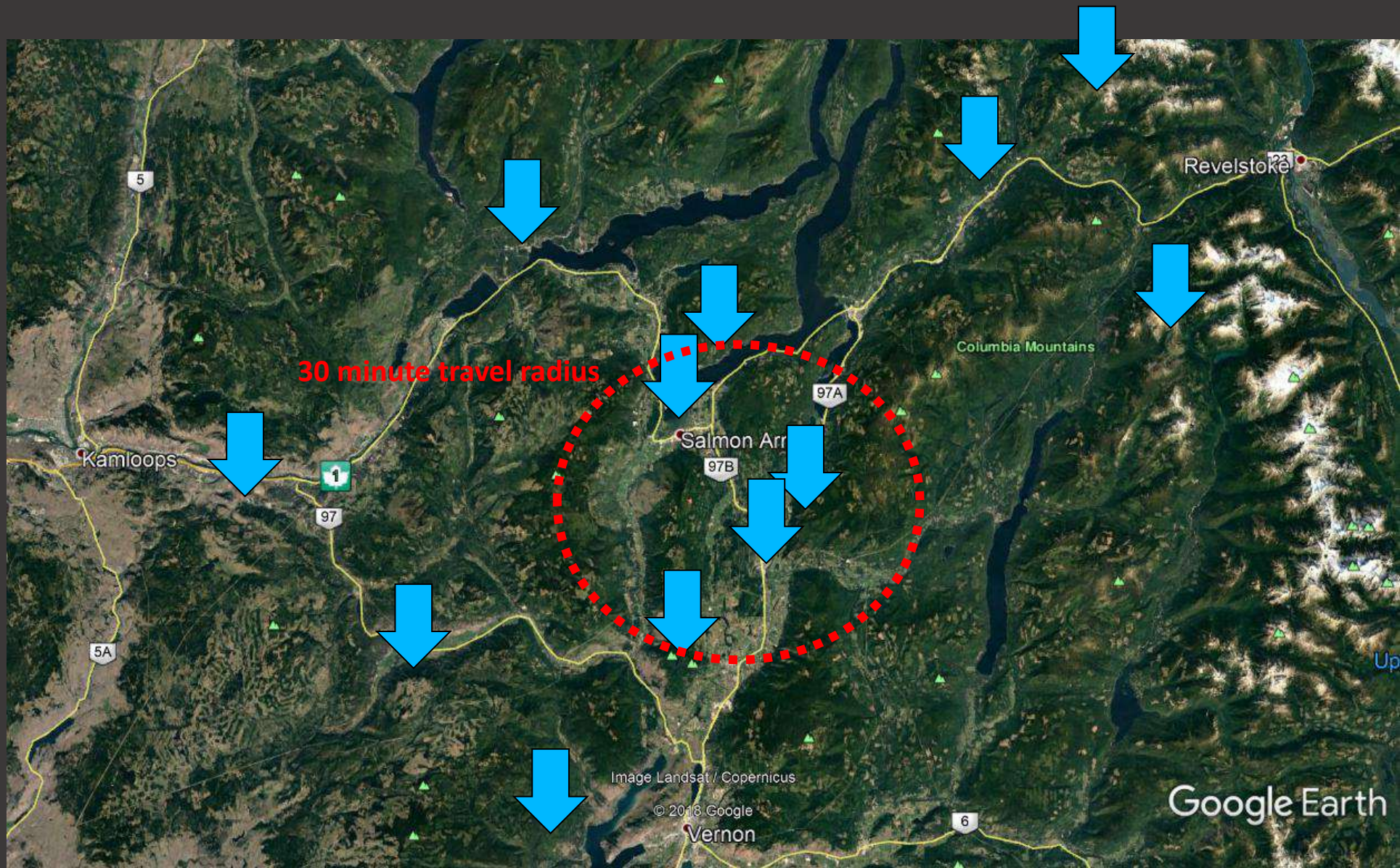
You are in Secwepemc
Territory



Linda Franklin and Neskonalith Councillor Louis Thomas,
Kela7scen (Mt Ida) Lookout (Photo: Jim Hoskin)

18 years
ago...

- Isolated local priorities
- 2002 Shuswap Tourism Opportunity Strategy
- CSRD Parks planning
- Pre-Olympic priorities
- 2005 round table discussion re: trails
- 2006 feasibility study & community consultation
- BC Trails Strategy



1996...

The Shuswap Trail Vision. . .

Establish the entire Shuswap Watershed as a united destination trail centre known for its active lifestyle, vibrant culture, natural beauty, and commitment to sustainable ecology





- **Well designed,**
- **Well signed,**
- **Well maintained,**
- **Well promoted**



Our Approach . . .

. . .to use a participatory,
relationship-based,
community-development
model



The Shuswap Trail Alliance. . .

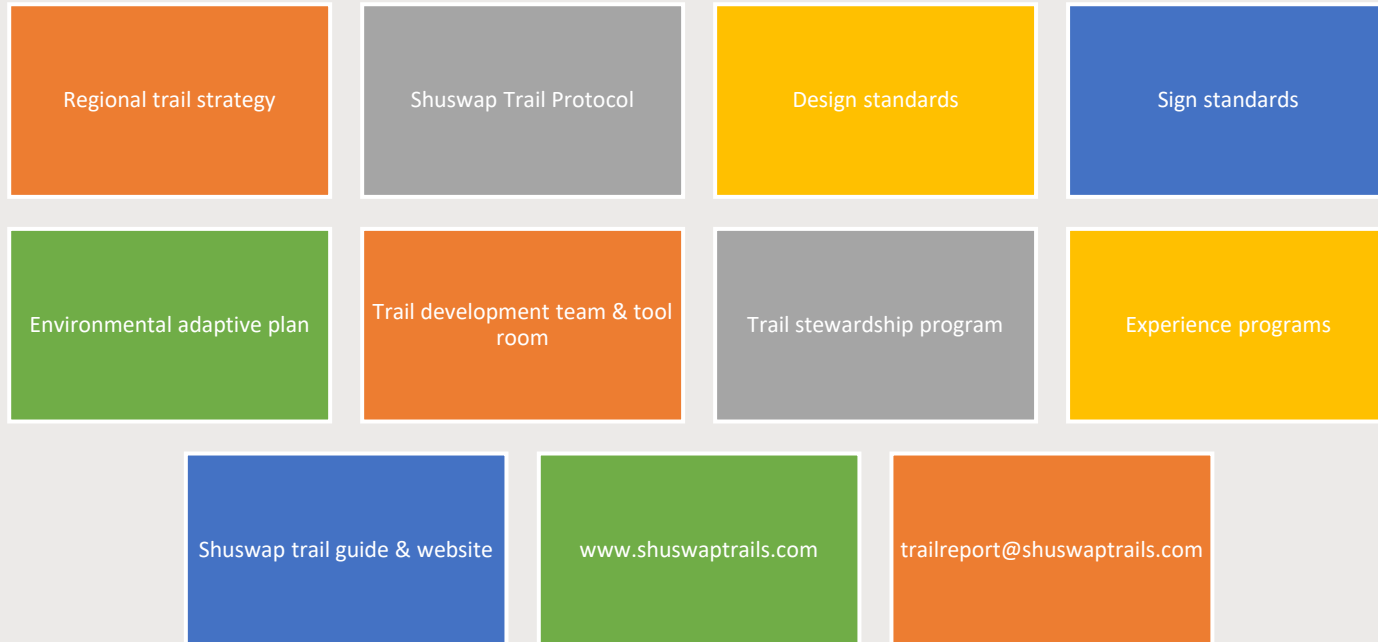
- the organizational body (formed in 2005) through which local and regional leadership work together to develop and implement the Shuswap Trails Strategy. . .
- . . .as First Nations, stewardship, government, industry, business, and community stewardship organizations and individuals.

5 Core Pillars. . .

1. Regional Collaboration
2. Trail Stewardship
3. Environmental Adaptive Planning
4. Experience Development
5. Capital projects/technical trail services



Shared tools. . .





November 2019 Regional Trail Strategy and Roundtable

Shuswap Trails Strategy and Roundtable

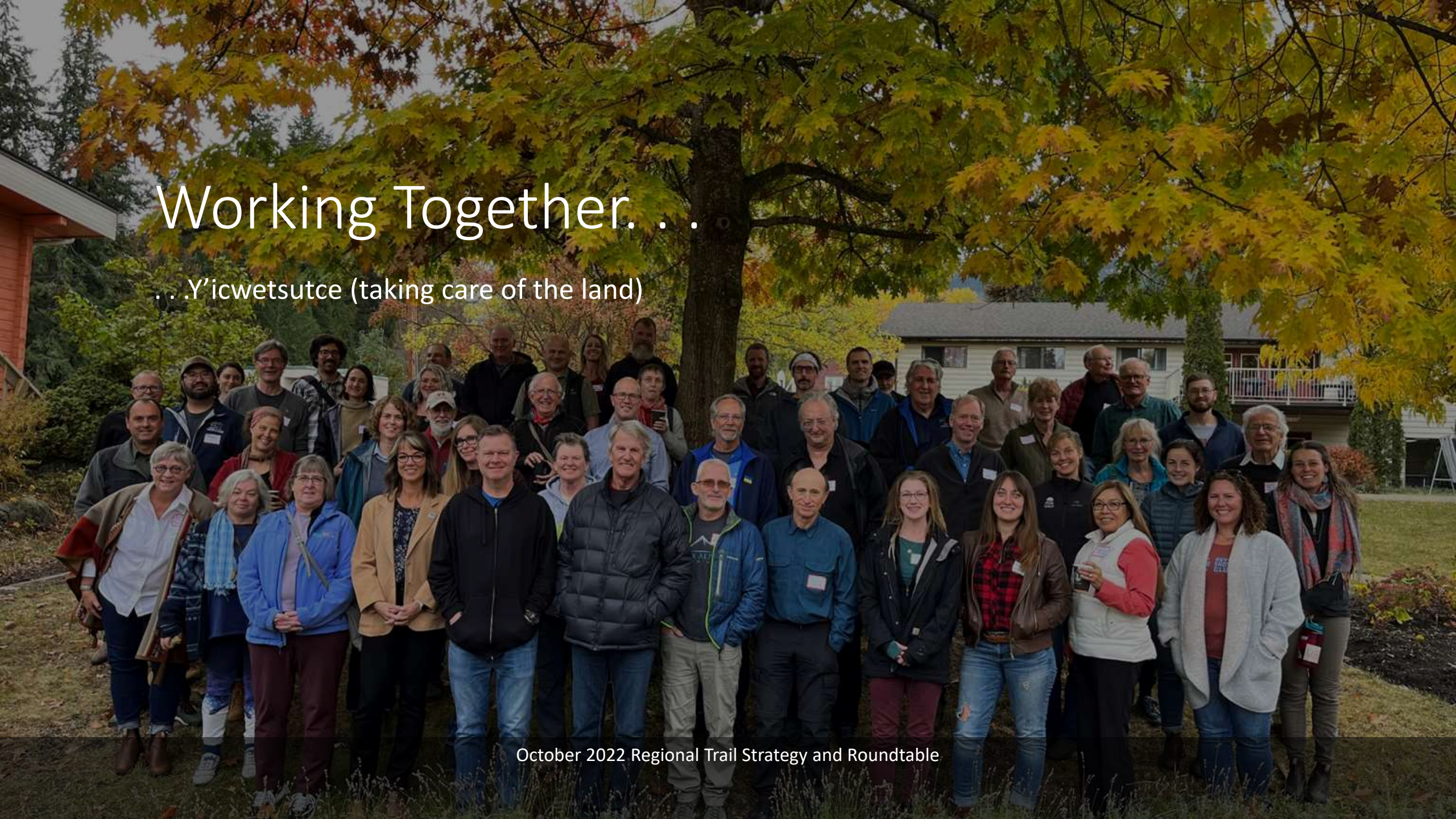
The purpose of the strategy is to protect, enhance and recognize trails as an integral part of the Shuswap lifestyle, culture and economy.

- ensure trails are appropriately authorized, mapped, developed, maintained, and promoted,
- protect and promote First Nations interests,
- reduce/repair ecological damage from all trail use,
- manage land access appropriately
- demonstrate collaborative management
- provide stability and security to all who invest in them.

Working Together. . .

. . .Y'icwetsutce (taking care of the land)

October 2022 Regional Trail Strategy and Roundtable





A few key values. . .

- Reverence
- Humility
- Respect
- Balance
- Enough
- Gratitude

Y'icwetsutce. . .

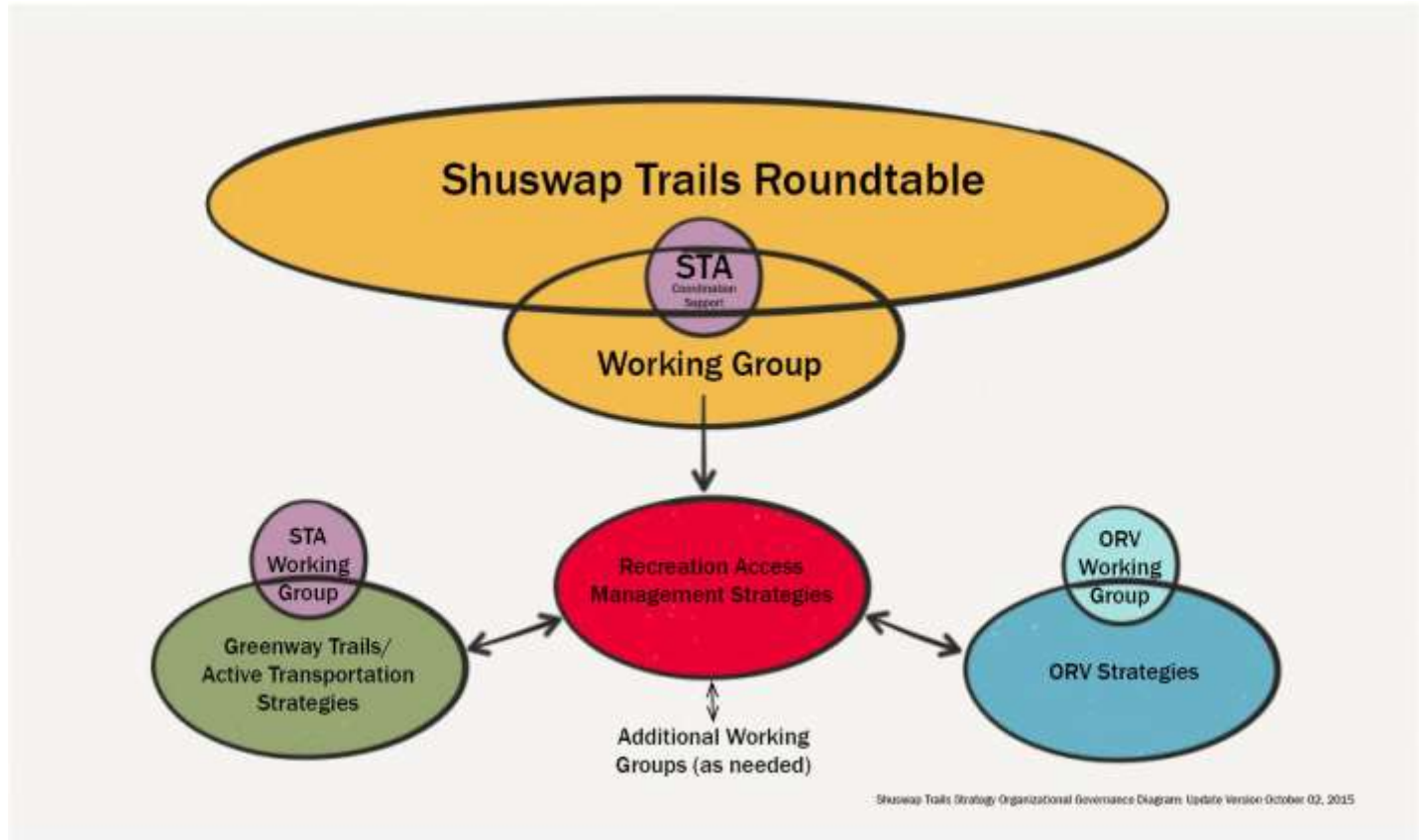
Letter of Understanding

- Work together
- Y'icwetsutce (Stewardship)
- Recognize First Nations Title & Rights
- Collaboration
- Respect

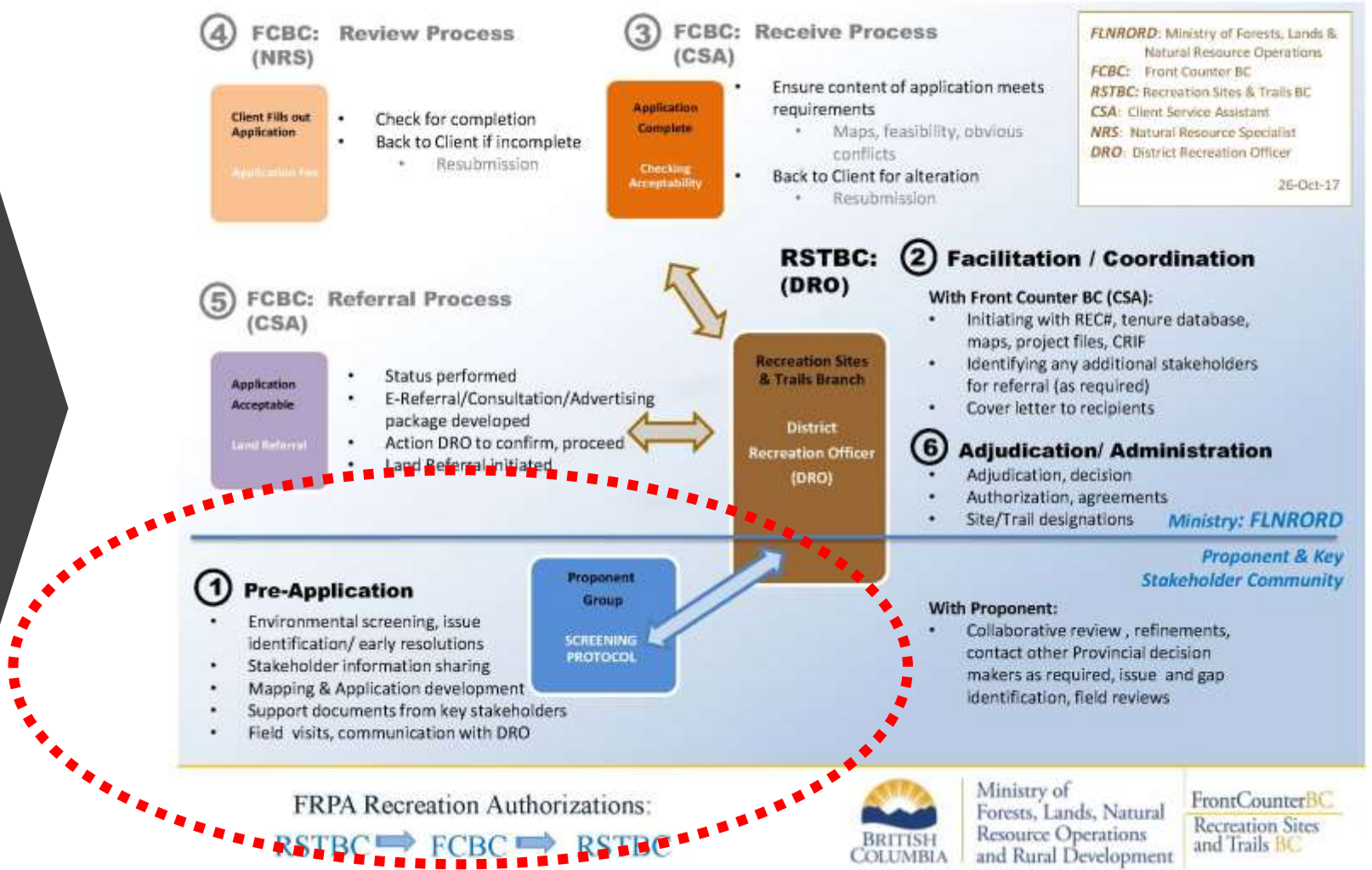


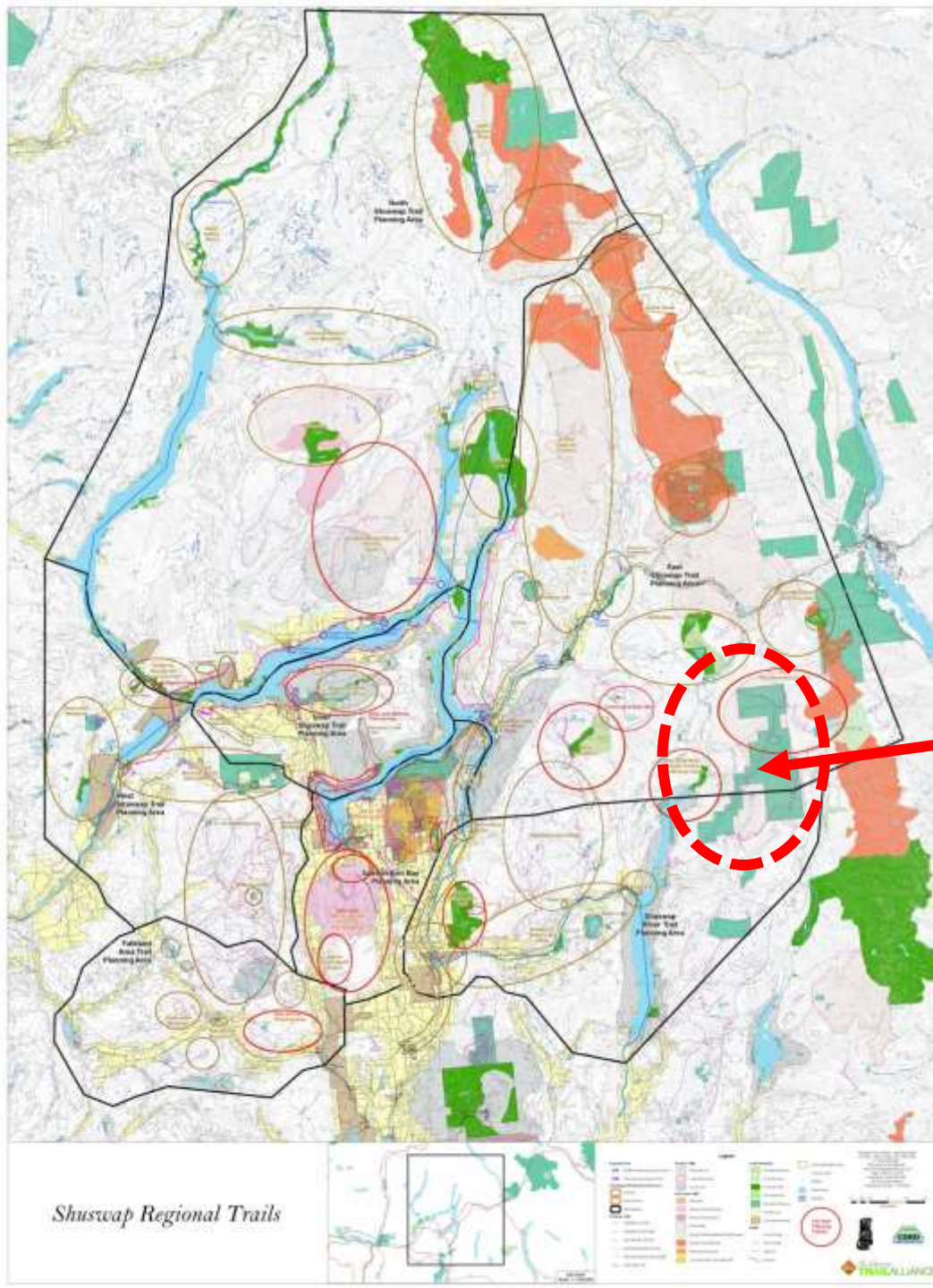
Signing the Shuswap Regional Trails Roundtable LoU, Dec 2015

Shuswap Trail Strategy and Roundtable



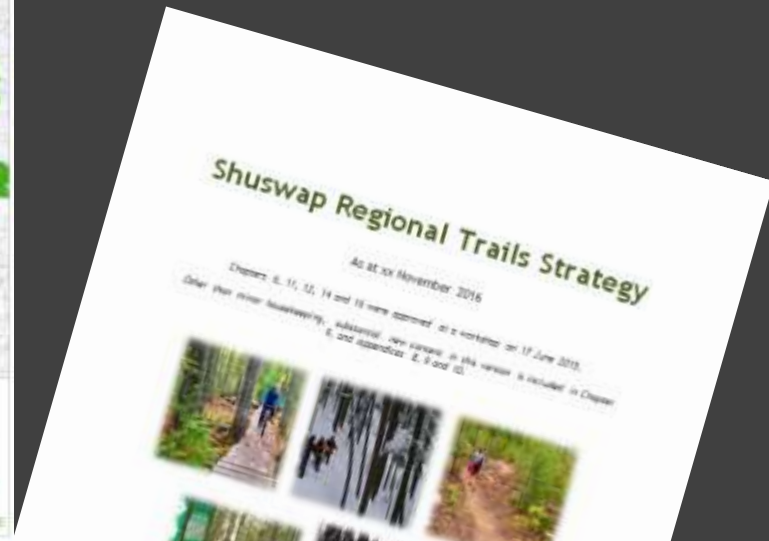
Pre- Authorization Process



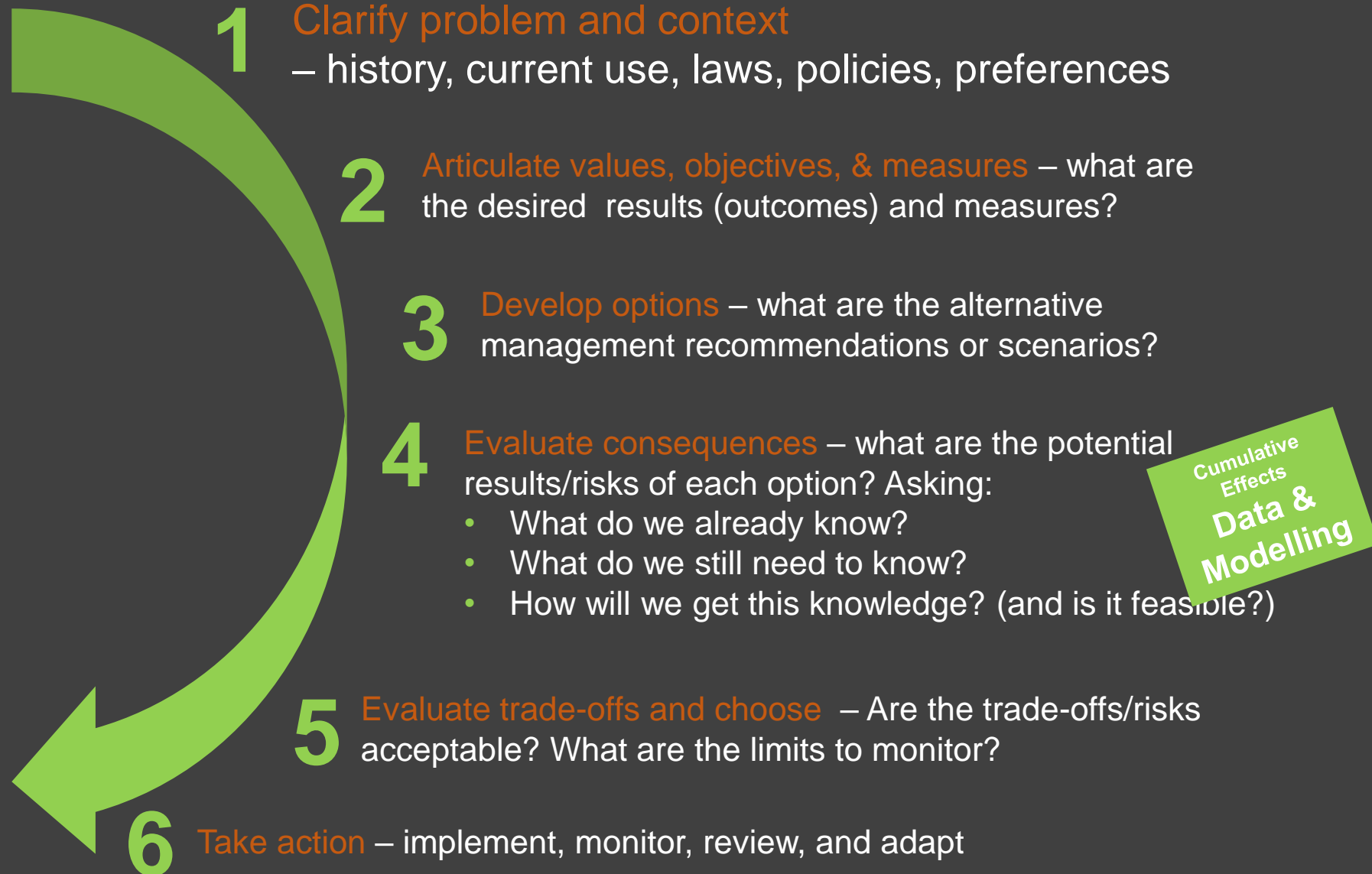


Shuswap Regional Trail Strategy Planning Priorities

Joss-Tsuius-Mabel
Access Planning Area

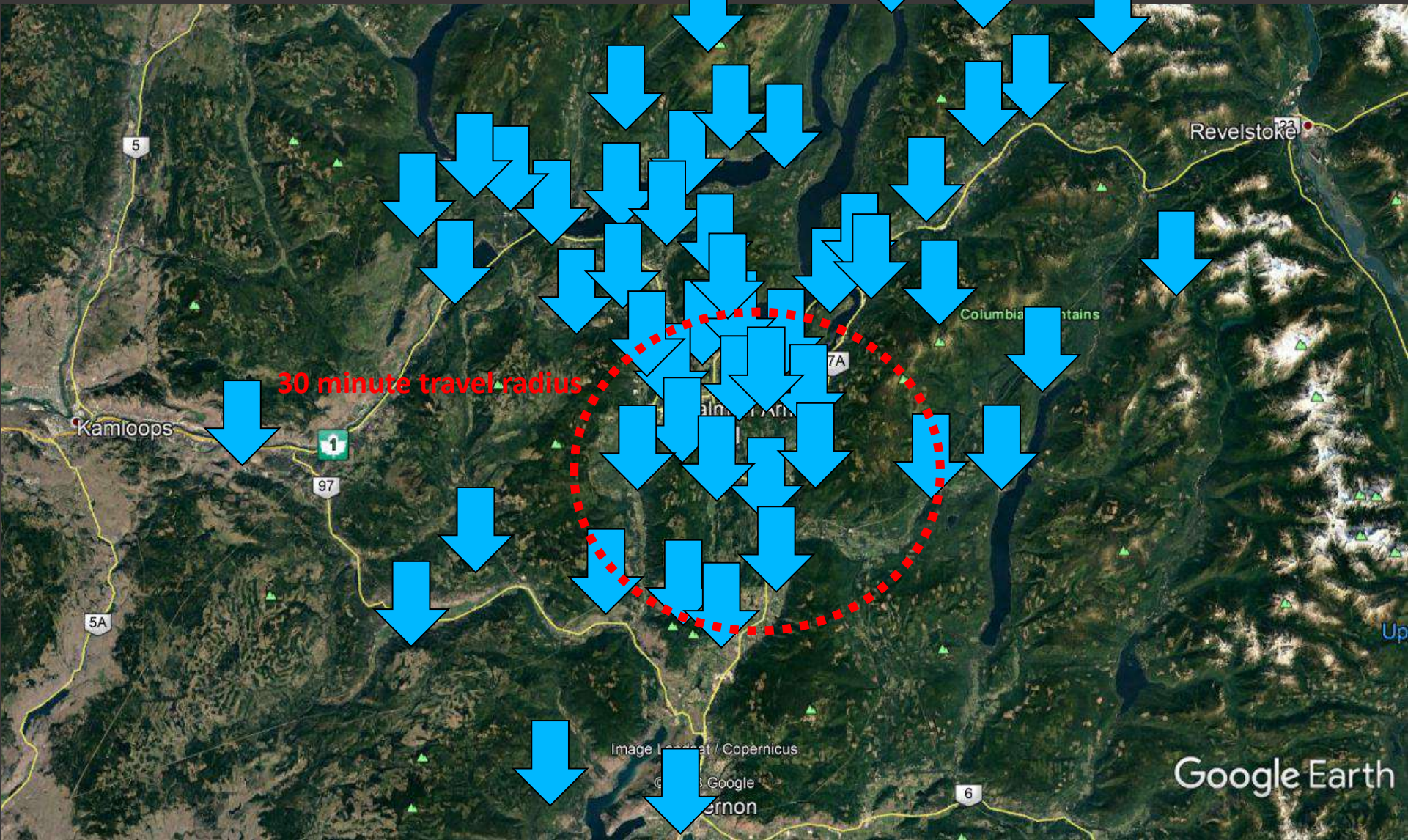


Structured Decision-Making:



The
outcome ~
with
partners ~
since 2006. .

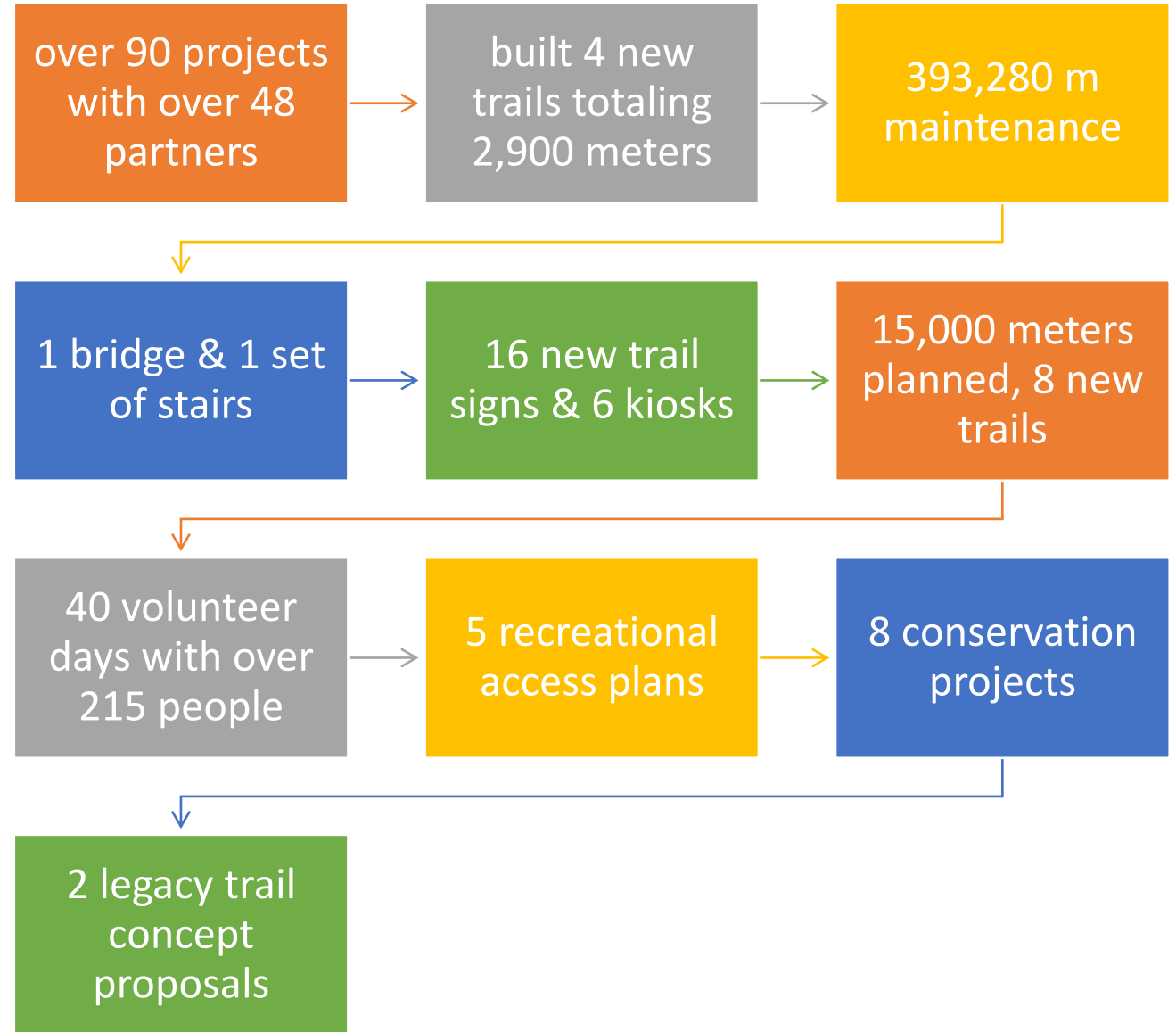




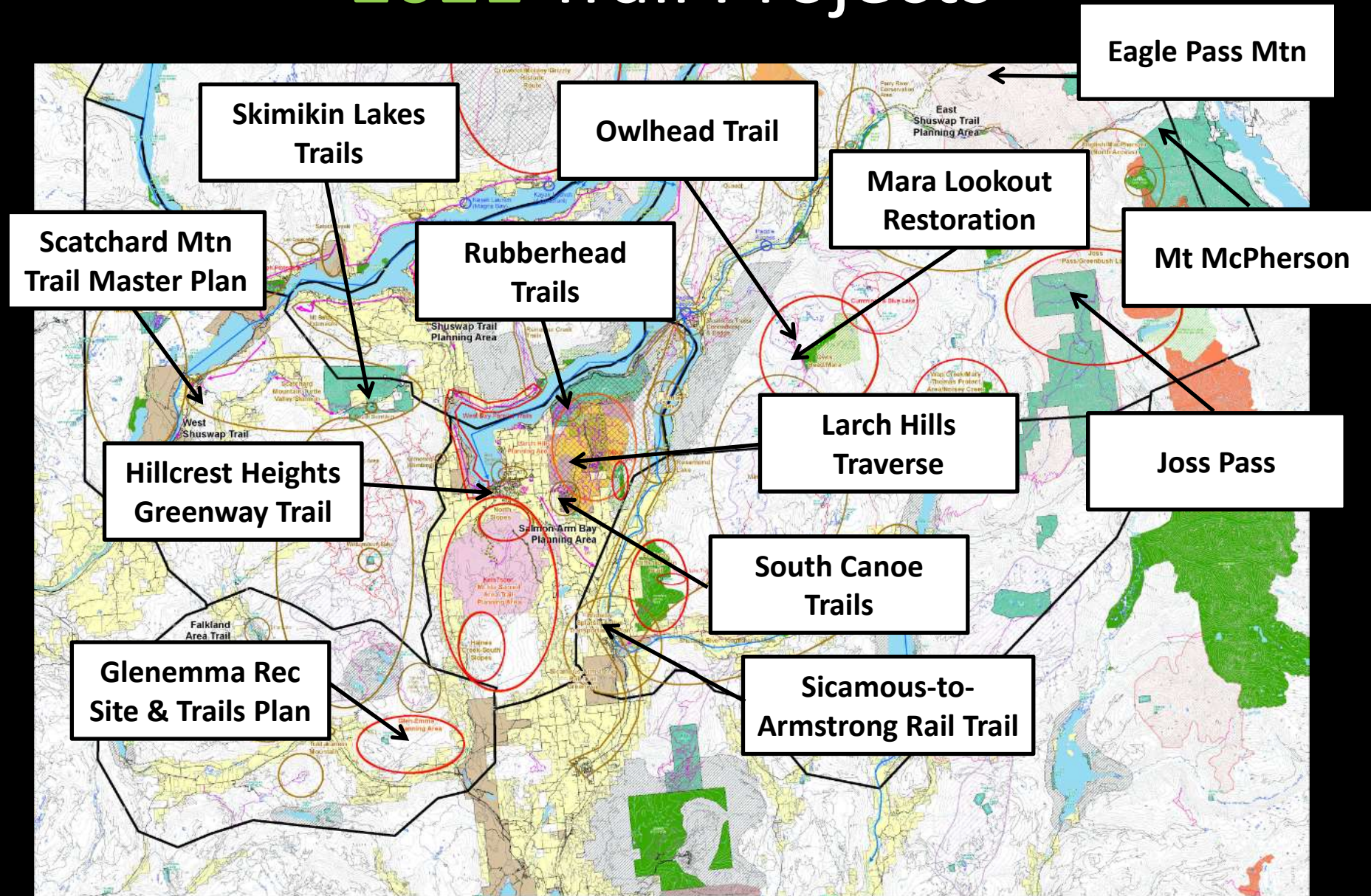
2022...

And in 2021 we worked on...

Stay tuned for 2022...



2021 Trail Projects





2022 Highlights

Anonymous Donor





Trail Building Workshop...

Funded by RSTBC, hosted by STA, & presented by Mark Wood



Yellow Flag Iris Removal

In partnership with Columbia Shuswap Invasive Species Society



Mara Lookout Historic Pack Trail Restoration...

Forest Employment Program grant... \$166,665!!!



Hillcrest Heights SA Greenway

In partnership with the City of Salmon Arm



Secwepemc Landmarks Project

Supporting Adams Lake, Little Shuswap, Neskonlith and Splatsin



Secwepemc Landmarks Trailhead Posts

More than 25 of the 100+ posts installed in 2021



Salmon Arm Foreshore Improvements

In partnership with the City of Salmon Arm



Larch Hills Traverse –Ida View/East Canoe Creek Bridge

In partnership with SI Dressage Association, Jackson Mt Bike Academy
and many community donations/volunteers



General Trail Maintenance

In partnership with the City of SA, CSRD Parks, BC Parks & more

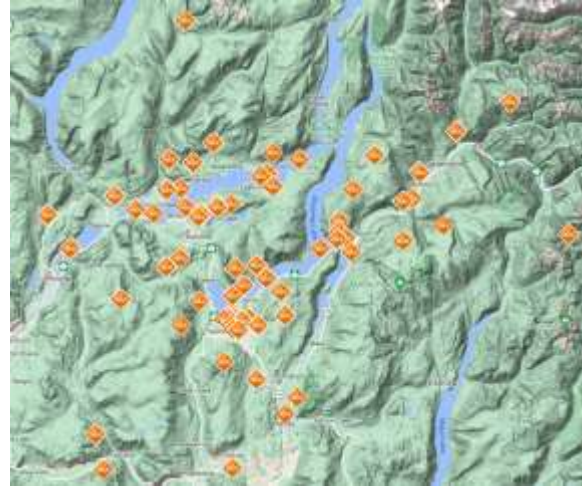


Shuswap North Okanagan Rail Trail

Splatsin te Secwépemc, the Columbia Shuswap Regional District,
and the Regional District of North Okanagan
visit www.shuswapnorthokanaganrailtrail.ca



Welcome to Secwepemc Territory



Activities:
 Regions:
 Distance:
 Elevation:

Difficulty:
 Dog Friendly
 Wheelchair

CHASE & AREA

TRAIL	DISTANCE	DIFFICULTY	ELEVATION CHANGE	STATUS
Chase Creek Falls	500 m (one way)	Easy	30m	Open
Haskard's Meadows	Various	Easy		Open
Haskard's Lake	Various	Easy		Open
Haskard's Lake Trailheads	3.8 km (one way)	More Difficult	0m	Open
Haskard's Lake Trails	Waters (in fall) and 3.8 km one-way	Easy to More Difficult	0m	Open

ENDERBY & AREA

TRAIL	DISTANCE	DIFFICULTY	ELEVATION CHANGE	STATUS
Endersby 20th Square Trail	4.8 km (one way)	More Difficult	30m	Open



Shuswap Trails Website Upgrade

Funded by the City of Salmon Arm, Shuswap Community Foundation, MRDT (Hotel Tax), and the CSRD GIS Department

Active Transportation Planning

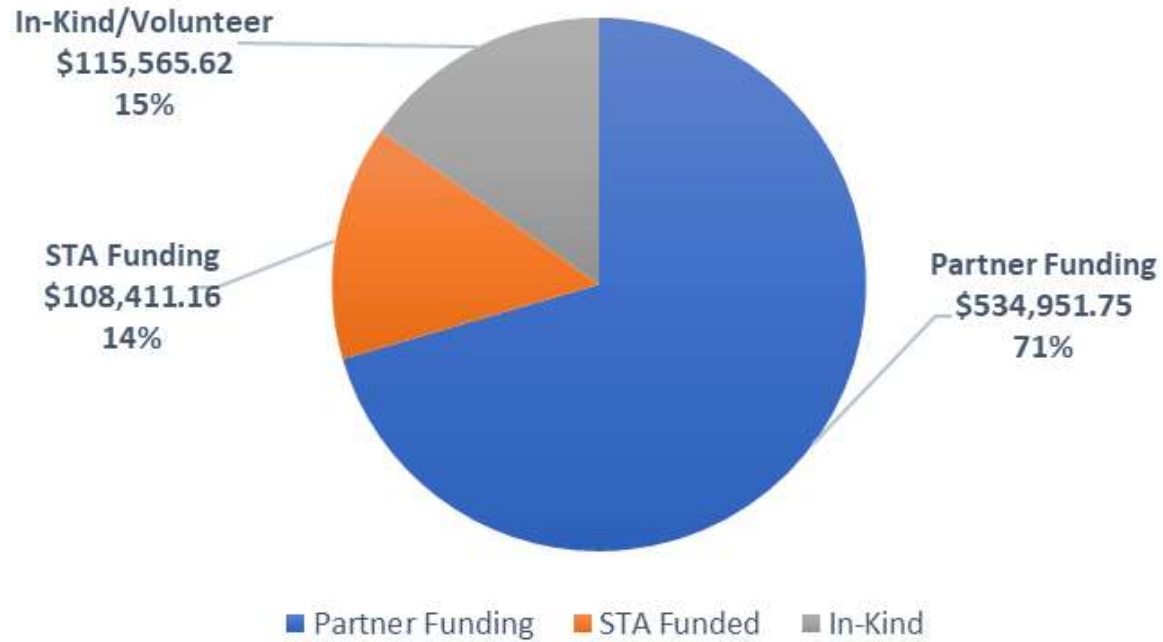


Salmon River Road Parallel Path (Silver Creek) – CSRD Area D

2021 Leveraged Resources...

BC Rural Dividend Program (MFLNRO)	Backcountry Horsemen of BC – Shuswap & North Ok.	BC Parks	Canada Summer Jobs	Community Fundraising	CSRD Parks Area C, D, E, F	City of Salmon Arm
City of Enderby/RDNO Area F Parks	Columbia Shuswap Invasive Species Soc.	District of Sicamous	North Shuswap Lions Club	Recreation Sites and Trails BC	Salmon Arm MRDT Funding (Hotel Tax)	School District 83
Shuswap Cycling Society	Shuswap Community Foundation	Shuswap Naturalist Club	SI Dressage Association	Shuswap Tourism	Village of Chase	And Community, Volunteers, In-kind

2021 Project Funding



Total
Leveraged
Value in 2021
\$758,928.53

Operational Agreements

- **As a partner, the City of Enderby benefits from:**
 - General advice on trail development issues
 - Regional Collaboration
 - Environmental Screening / Adaptive Planning
 - Trail Stewardship
 - Trail Experience Development and Programs
 - Reduced partner rate for Capital Projects
Co-Ordination and Technical Trail Services

2022 - 2024 Priorities...



Priorities in
2023...currently
50+ active projects
with targets in all
sub-regions of the
Shuswap:

Advance Regional Trail
Strategy, Roundtable,
and Access
Management Priorities

Support the Secwepemc
Landmarks and
Trailhead Sign project

Complete the 2020
Shuswap Trail
Infrastructure Projects
(3 new trails)

Complete the South
Shuswap Destination
Trail Concept Plan

Complete the Mara
Lookout Trail
Restoration Project

Update Trail Guide

Cliff Drive Trail

Complete Enderby
greenway connector
plan

Work with BC Parks for a
new Herald's Park kiosk

Complete CSRD trail
projects

Complete City trail
projects

Maintain annual trail
maintenance schedule
& trail reporting system

Support inter-
jurisdictional
development of the
Sicamous – Armstrong
Rail Trail

Support volunteer trail
stewardship,
engagement, and
training

Continue ongoing trail
planning & capital
project targets with
regional partners



2023 STA Projects in Enderby & Area

- Cliff Drive Trail
- Secwepemc Landmarks
- Enderby Cliffs Maintenance & Volunteer Day
- Hidden Lake Trail Plan



The Request? Regional Trails Roundtable

Funding required
\$17,650/year

<i>PROPOSED CONTRIBUTING PARTNERS</i>	<i>ANNUAL BUDGET</i>	<i>STATUS</i>
Secwepemc Lakes Governments	\$1000	<i>unconfirmed</i>
Province – Rec Sites & Trails BC	\$2500	<i>Confirmed</i>
CSRD	\$1500	<i>unconfirmed</i>
RDNO	\$1500	<i>unconfirmed</i>
Salmon Arm	\$1500	<i>unconfirmed</i>
Chase, Sicamous	\$1000	<i>unconfirmed</i>
Enderby	\$500	<i>unconfirmed</i>
Other Partners – funding	\$1000	<i>unconfirmed</i>
Clubs and Member Organizations	\$1000	<i>unconfirmed</i>
NGO Sectors & Stewardship Organizations (STA etc.)	\$6,150	<i>Confirmed</i>
Total Revenue	\$17,650	

x 4-year annual shared commitment

What can you do to help the STA???

- Use the trails
- Tell others about the trails
- Join a local trail organization
- Speak with our elected officials
- Become an Alliance member
- Volunteer – become a steward
- Make a charitable contribution

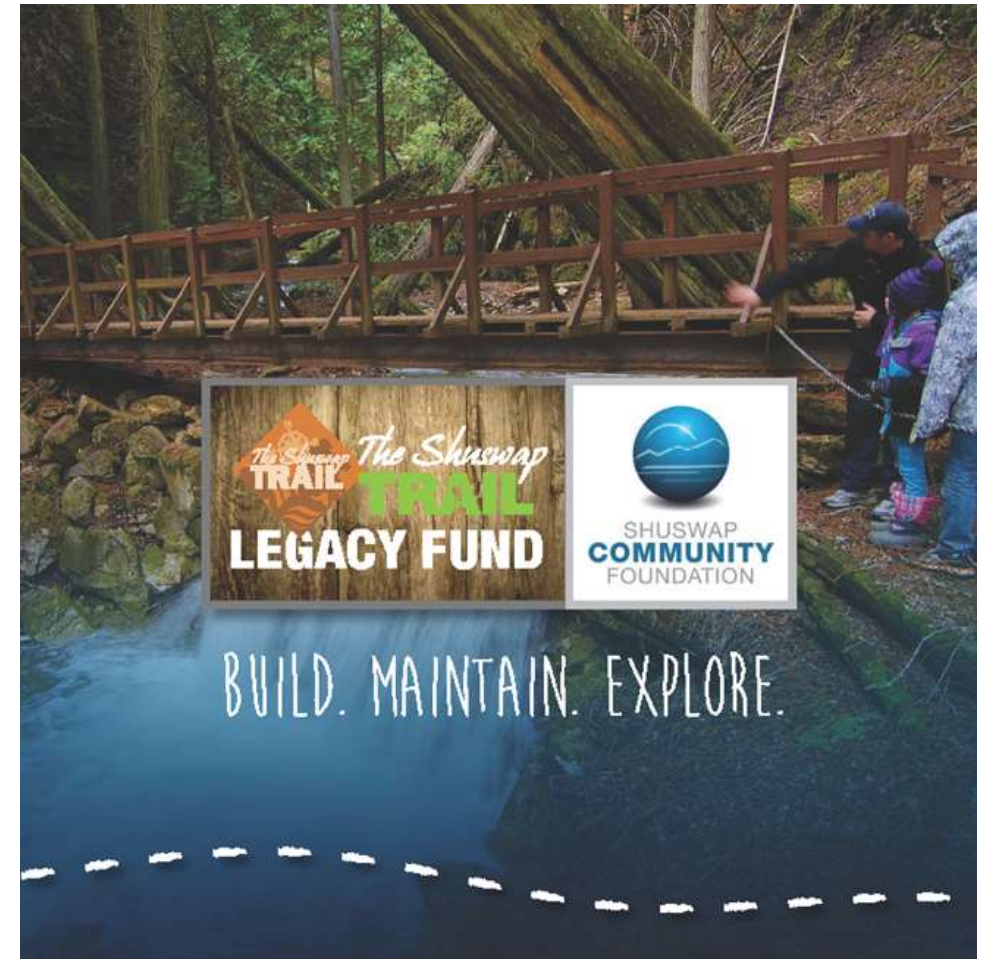


Shuswap Trail Legacy Fund

www.shuswapfoundation.ca



SHUSWAP
COMMUNITY
FOUNDATION





Build a Metre of Trail

Help build trails in 2023

- \$5 posts a blaze
- \$10 digs the tread
- \$20* buffs a whole metre
- \$50* caps it in gravel
- \$100* decks it with boardwalk
- Make your contribution at. . .

www.shuswaptrails.com



Kukstemc – Thank You!



Please visit. . .
www.shuswaptrails.com