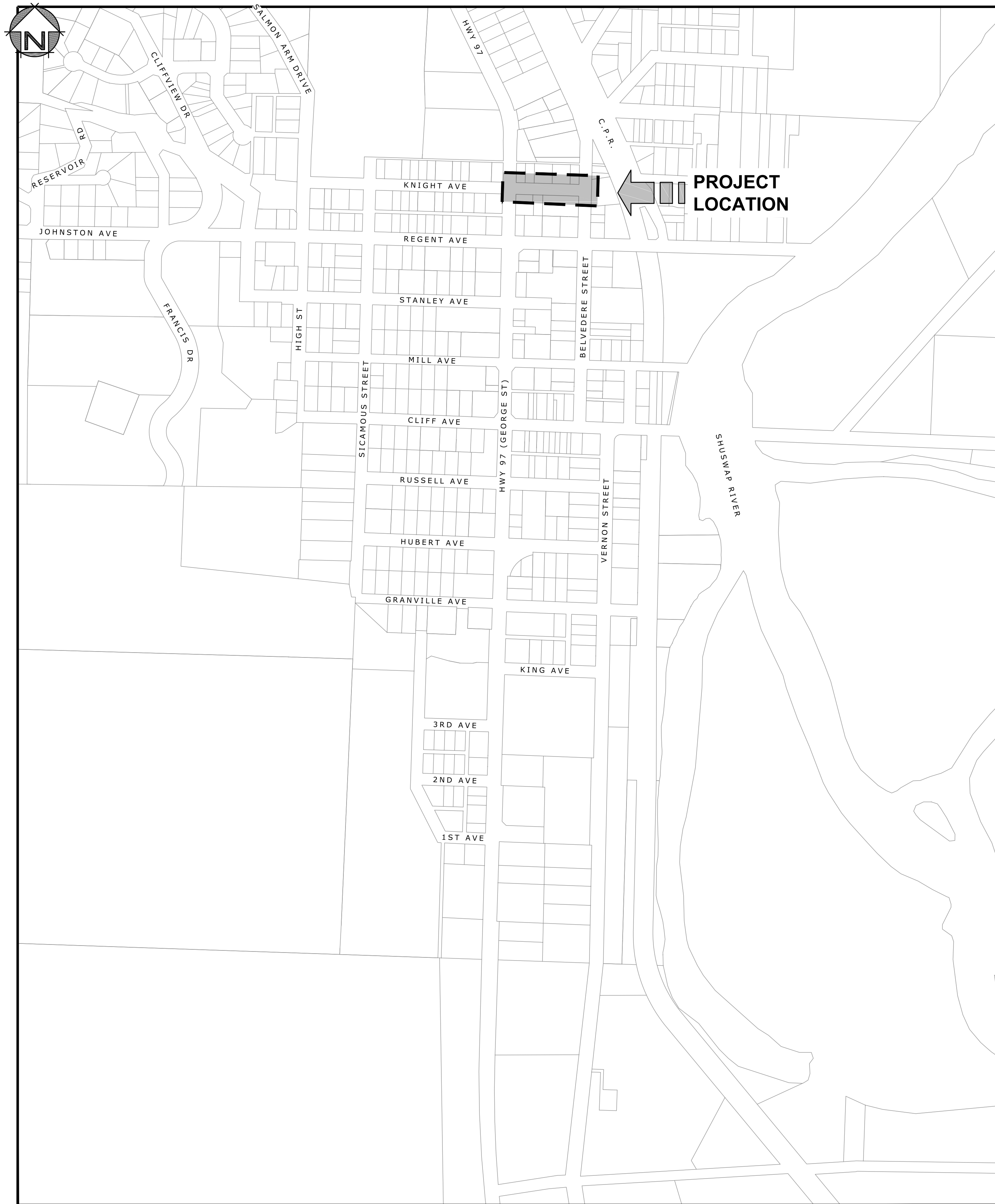


KNIGHT AVE RECONSTRUCTION GEORGE ST TO BELVEDERE ST 75% DESIGN



3710B 28th Street, Ph: (250) 503-1023
Vernon, BC, V1T 9X2 Fax: (250) 503-1024



GENERAL NOTES:

- ALL CONSTRUCTION AND MATERIALS TO BE IN ACCORDANCE WITH THE CITY OF ENDERBY STANDARD SPECIFICATIONS AND DRAWINGS UNLESS OTHERWISE NOTED.
- WHEN A CONFLICT BETWEEN THE SPECIFICATIONS ARISES, THE MOST STRINGENT SHALL APPLY.
- OBTAIN A PERMIT TO CONSTRUCT WORKS ON A MUNICIPAL RIGHT OF WAY FROM THE CITY OF ENDERBY 48 HOURS PRIOR TO THE START OF ANY CONSTRUCTION.
- CONTRACTOR TO LOCATE ANY AND ALL EXISTING UTILITIES PER LATEST WORKSAFE BC, CITY OF ENDERBY, AND/OR UTILITY PROVIDER GUIDELINES AND REGULATIONS.
- LOCATION AND OFFSETS OF EXISTING UTILITIES SHOWN ON THESE PLANS ARE COMPILED FROM THE MOST RECENT INFORMATION AVAILABLE, BUT ARE NOT GUARANTEED TO BE COMPLETE OR ACCURATE AND MUST BE VERIFIED BY THE CONTRACTOR PRIOR TO CONSTRUCTION. ANY DAMAGE TO AN EXISTING UTILITY AS A RESULT OF CONSTRUCTION WILL BE THE SOLE RESPONSIBILITY OF THE CONTRACTOR.
- EXPOSE ALL EXISTING SERVICES AT CONNECTION AND CROSSING POINTS 48 HOURS PRIOR TO STARTING CONSTRUCTION ON ANY SUCH SERVICES. ADVISE ENGINEER OF ANY CONFLICTS.
- DO NOT START ANY BACKFILL OPERATION UNTIL THE WORKS HAVE BEEN INSPECTED BY THE ENGINEER.
- AFTER CONSTRUCTION, RESTORE WORK AREAS AND ALL EXISTING FEATURES TO THEIR ORIGINAL CONDITION OR BETTER.
- MAINTAIN LOCAL VEHICULAR AND PEDESTRIAN ACCESS THROUGH CONSTRUCTION AREA DURING CONSTRUCTION, AS PER THE TRAFFIC MANAGEMENT PLAN.
- ADJUST ALL PROPOSED AND EXISTING APPURTENANCES TO MEET THE FINISHED GRADES.
- ENSURE THAT ALL EXISTING SERVICES REMAIN USABLE DURING CONSTRUCTION.
- REMOVE EXISTING ASPHALT CONSISTENT WITH THE LIMITS OF CONSTRUCTION SHOWN ON THE DRAWINGS AND AS NECESSARY TO COMPLETE THE WORK.
- OFFSETS SHOWN ARE FOR REFERENCE ONLY. DIGITAL LAYOUT WILL BE PROVIDED AT TIME OF CONSTRUCTION.
- REMOVE AND REINSTALL EXISTING SIGNAGE AS PER THE LATEST MOTI STANDARD SPECIFICATIONS.

WATER

- ALL CONSTRUCTION AND MATERIALS TO BE IN ACCORDANCE WITH CITY OF ENDERBY STANDARD SPECIFICATIONS AND DRAWINGS UNLESS OTHERWISE NOTED.
- ALL WATER MAIN PIPE TO BE PVC DR18, AWWA STANDARD C900. PROVIDE 1.5m MINIMUM COVER.
- ALL WATER VALVES AND FITTINGS TO BE JOINT RESTRAINED AND HAVE CONCRETE REACTION BLOCKS.
- ALL METALLIC VALVES, FITTINGS, AND JOINT RESTRAINTS TO BE FULLY PROTECTED FROM CORROSION THROUGH THE USE OF DENSO PASTE AND TAPE OR APPROVED EQUAL.
- CONTRACTOR TO TEST, FLUSH AND CONNECT THE WATER MAINS UNDER THE SUPERVISION OF THE ENGINEER AND AS PER THE WATER TESTING AND RETURN TO SERVICE PLAN.
- WATER SERVICES TO BE MINIMUM 190 UNLESS OTHERWISE NOTED.
- ALL EXISTING VALVES TO BE OPERATED BY CITY OF ENDERBY CREWS ONLY. CONTRACTOR NOT TO OPERATE ANY EXISTING VALVES.
- THE CONTRACTOR SHALL PROVIDE A MINIMUM 48 HOURS (2 WORKING DAYS, DEFINED AS MONDAY TO FRIDAY, EXCLUDING STATUTORY HOLIDAYS) ADVANCE NOTICE TO THE ENGINEER, CITY OF ENDERBY, FIRE DEPARTMENT, AND THE AFFECTED WATER SERVICE USERS PRIOR TO ANY MAIN AND/OR SERVICE SHUT DOWN OR DISRUPTION. NO SHUTDOWNS OF GREATER THAN 8 HOURS WILL BE ALLOWED. THE CONTRACTOR SHALL COORDINATE ALL SERVICE DISRUPTIONS WITH THE ENGINEER, CITY OF ENDERBY AND THE FIRE DEPARTMENT.

STORM SEWER

- STORM SEWER MAIN TO BE 2500 RIBBED PVC UNLESS OTHERWISE NOTED.
- STORM SEWER SERVICES TO BE 1500 PVC SDR 28 @ MINIMUM 1.0% UNLESS OTHERWISE NOTED.
- CATCH BASIN LEADS TO BE 2000 PVC SDR 35 @ MINIMUM 1.0%.
- CATCH BASIN FRAME AND GRATES TO BE TROJAN T-K7 FOR MOUNTABLE CURB WITH GUTTER.
- TOP INLET CATCH BASIN BARRELS TO BE MINIMUM 7500 DIAMETER.
- SIDE INLET CATCH BASIN BARRELS TO BE 9000 DIAMETER.

SANITARY SEWER

- SANITARY SEWER MAIN TO BE 1500 PVC SDR 28.
- SANITARY SEWER SERVICES TO BE 1000 PVC SDR 28 @ MINIMUM 2.0% UNLESS OTHERWISE NOTED.

HYDRO, TELEPHONES, CABLE, STREETLIGHTING AND GAS

- COMPLETE "BC ONE CALL" AT 1-800-474-6886 AND CONTACT ANY OTHER APPLICABLE UTILITY A MINIMUM OF 48 HOURS PRIOR TO START OF CONSTRUCTION.

DRAWING INDEX:

No.	DESCRIPTION
C000	COVER SHEET
C001	VICINITY PLAN, GENERAL NOTES & DRAWING INDEX
C100	OVERALL PLAN AND COMPOSITE UTILITY PLAN
C101	REMOVALS PLAN
C200	ROADWORKS - PLAN & PROFILE - FROM STA: 0+080 TO 0+220
C201	PAVEMENT MARKINGS & SIGNAGE
C300	SANITARY - PLAN & PROFILE - FROM STA: 0+000 TO 0+130
C301	STORM - PLAN & PROFILE - FROM STA: 0+000 TO 0+130
C400	WATER - PLAN & PROFILE - FROM STA: 0+000 TO 0+130
C500	TYPICAL SECTIONS & DETAILS

CONTROL POINTS

POINT No.	NORTHING	EASTING	ELEVATION
1223	5 602 458.2973	348 555.8513	351.5533
8000	5 602 246.7341	348 639.5222	352.7217
8042	5 602 401.8452	348 515.9476	352.1708
8043	5 602 458.5760	348 525.5203	352.899
10000	5 602 349.2451	348 499.0323	352.535

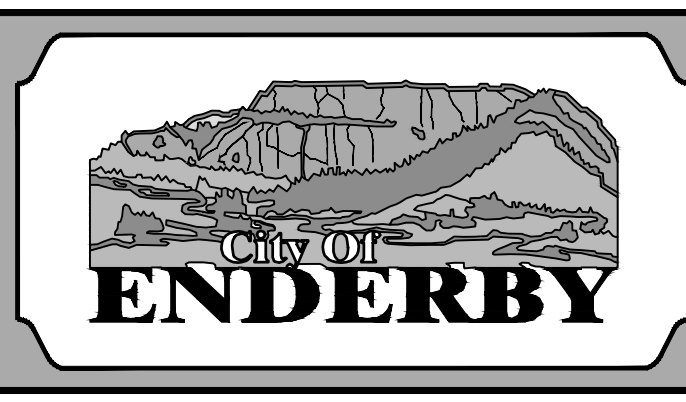
VICINITY MAP
SCALE: N.T.S.

USER: casevp
 CTB: moad-fulback.ctb
 LAYOUT: C001
 PLOTTED: 2021-01-14 - 10:24 AM
 XREFS: 1584.34-LEGL-E.dwg, 1584.34-PLNM-E.dwg, 1584.34-PLNM-N.dwg, 1584.34-PLNM-N.dwg, 1584.34-DSGN-N.dwg
 IMAGES:
 FILE: z:\mead\projects\1584.34 - Knight ave - coe\drawings\sheets\1584.34-plans.dwg

Rev.	Date	By	Description
A	2021-JAN-14	CFB	75% DESIGN SUBMISSION

3710B 28th Street, Vernon, BC, V1T 9X2
 Ph: (250) 503-1023
 Fax: (250) 503-1024

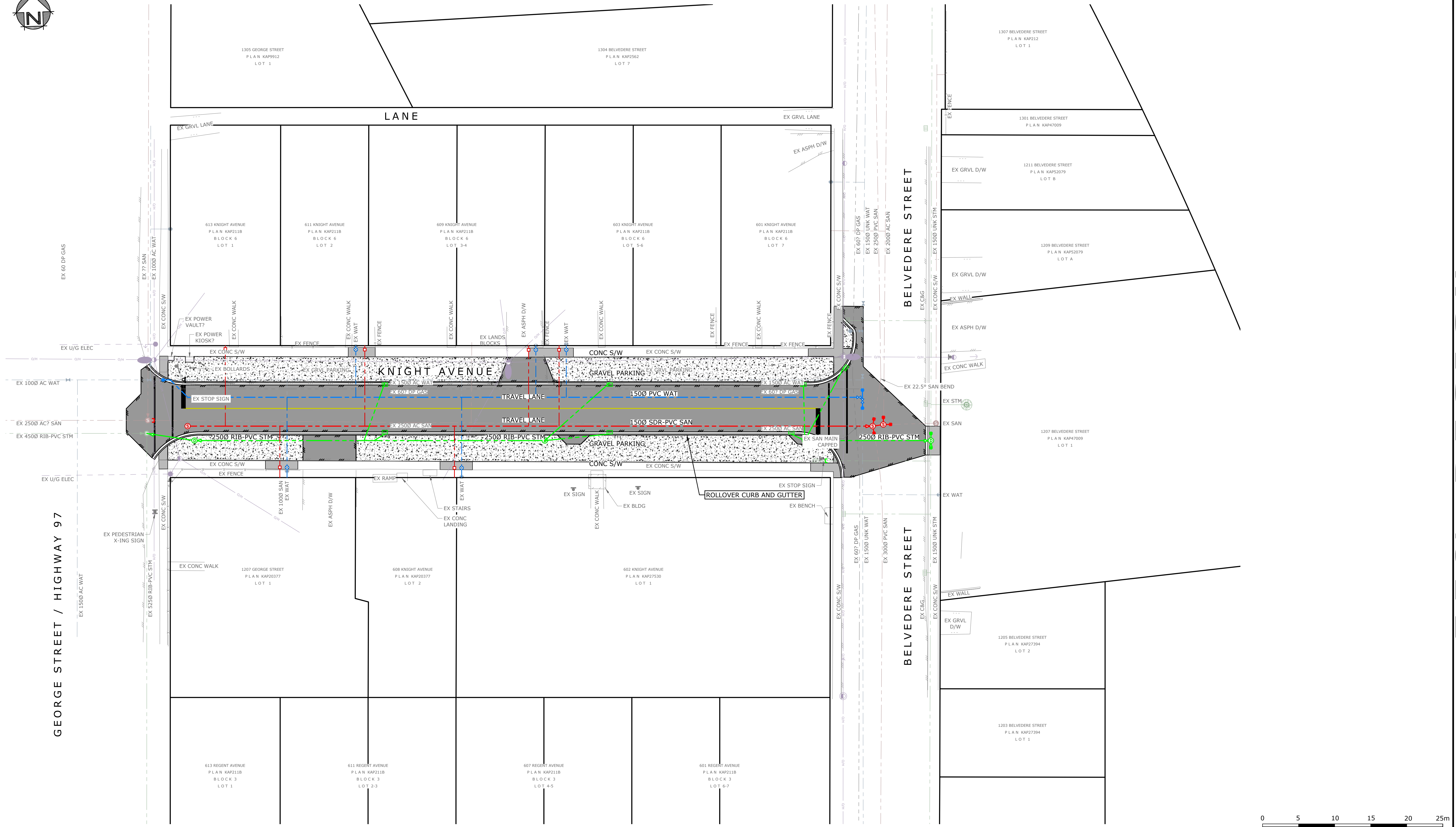
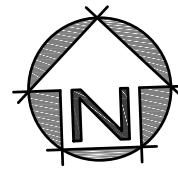
Seal	AS NOTED
Date	DEC 2020
Designed	CH
Drawn	CFB
Checked	CH



CITY OF ENDERBY
 KNIGHT AVE RECONSTRUCTION
 VICINITY PLAN, GENERAL NOTES
 & DRAWING INDEX

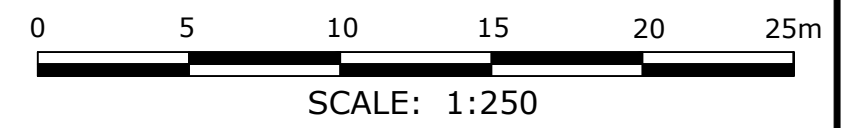
Project No.	1584.34
Client File No.	-
Sheet No.	1 OF 9
Drawing No.	C001
Rev.	A

75% DESIGN



GEORGE STREET / HIGHWAY 97

BELVEDERE STREET



SCALE: 1:250

USER: casevp
CTB: mcaad-fu/iblock.ctb
LAYOUT: C100
PLOTTED: 2021-01-14 - 10:24 AM
XREFS: 1584.34-LEGL-E.dwg, 1584.34-PLNM-E.dwg, 1584.34-PLNM-N.dwg, 1584.34-DSGN-N.dwg
IMAGES:
FILE: z:\mead\projects\1584.34 - knight ave - cse\drawings\sheets\1584.34-plans.dwg

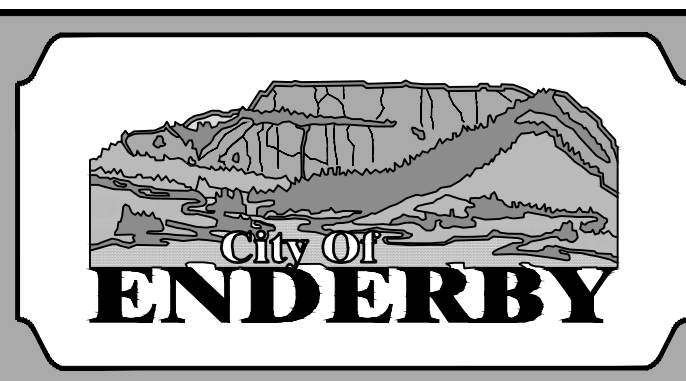
Rev.	Date	By	Description
A	2021-JAN-14	CFB	75% DESIGN SUBMISSION

LEGEND: (EXISTING SYMBOLS SHOWN GREY/SOLID)	
	- EDGE OF ASPHALT
	- EDGE OF GRAVEL
	- FENCELINE
	- BUILDING
	- TOP OF BANK
	- BOTTOM OF BANK
	- DITCH
	- TREELINE
	- SANITARY STORM DRAIN
	- WATER
	- GAS
	- HYDRO/TEL
	- GUY WIRE
	- ANCHOR POLE
	- HYDRO/TEL POLE
	- POLE W/ TRANSFORMER
	- HYDRO TUB/VAULT
	- TEL TUB/VAULT
	- SHAW CABLE TUB/VAULT
	- JUNCTION BOX
	- SERVICE BOX
	- KIOSK
	- LOW POWER TRANSFORMER
	- TRAFFIC SIGNAL
	- STREET LIGHT
	- CAP
	- INSPECTION CHAMBER
	- SANITARY MANHOLE
	- DRAINAGE MANHOLE
	- DRY WELL
	- CATCHBASIN MANHOLE
	- CATCHBASIN
	- DRAINAGE INVERT
	- HEADWALL
	- AIR VALVE
	- WATER VALVE
	- CURB STOP
	- FIRE HYDRANT
	- BLOW-OFF
	- REDUCER
	- COUPLER
	- PROPERTY PIN
	- HUB
	- MONUMENT
	- BOREHOLE
	- SIGN
	- TREE

MONAGHAN
ENGINEERING & CONSULTING LTD.

3710B 28th Street, Vernon, BC, V1T 9X2 Ph: (250) 503-1023
Fax: (250) 503-1024

Scale	1:250
Date	DEC 2020
Designed	CH
Drawn	CFB
Checked	CH

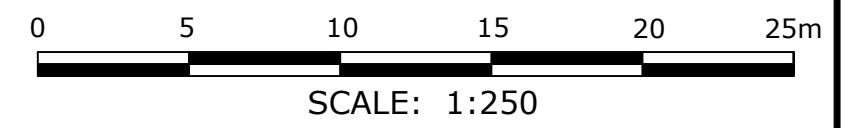
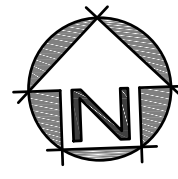


CITY OF ENDERBY

KNIGHT AVE RECONSTRUCTION
COMPOSITE UTILITY
PLAN

Project No.	1584.34
Client File No.	-
Sheet No.	2 OF 9
Drawing No.	C100
Rev.	A

75% DESIGN



SCALE: 1:250

USER: caseyp
CTB: mcaed-fu/iback.ctb
LAYOUT: C101
PLOTTED: 2021-01-14 - 10:24 AM
XREFS: 1584.34-LEGL-E.dwg, 1584.34-PLNM-E.dwg, 1584.34-PLNM-N.dwg, 1584.34-DSGN-N.dwg
IMAGES:
FILE: z:\mead\projects\1584.34 - knight ave - cse\drawings\ sheets\1584.34-plans.dwg

Rev.	Date	By	Description
A	2020-DEC-30	CFB	75% DESIGN SUBMISSION

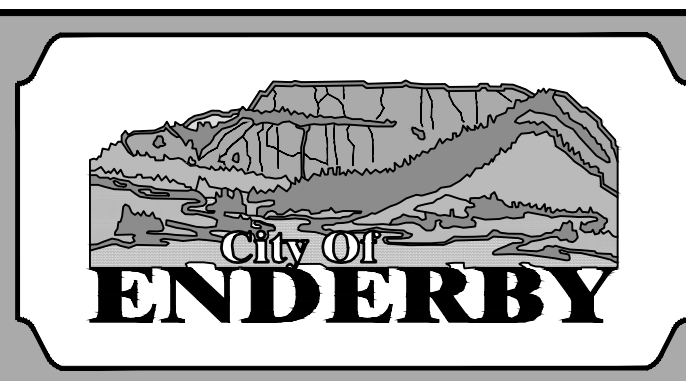
LEGEND: (EXISTING SYMBOLS SHOWN GREY/SOLID)

	- EDGE OF ASPHALT		- GUY WIRE		1- - BLOW-OFF
	- EDGE OF GRAVEL		- ANCHOR POLE		4 - REDUCER
	- FENCING		- HYDRO/TEL POLE		# - COUPLER
	- BUILDING		- POLE w/ TRANSFORMER		o - PROPERTY PIN
	- TOP OF BANK		- HYDRO TUB/VAULT		o - HUB
	- BOTTOM OF BANK		- TEL TUB/VAULT		o - MONUMENT
	- DITCH		- SHAW CABLE TUB/VAULT		o - BOREHOLE
	- TRELINE		- JUNCTION BOX		o - SIGN
	- STORM DRAIN		- SERVICE BOX		o - TREE
	- WATER		- KIOSK		
	- GAS		- LOW POWER TRANSFORMER		
	- HYDRO/TEL		- TRAFFIC SIGNAL		
			- STREET LIGHT		
			- CAP		
			- INSPECTION CHAMBER		
			- SANITARY MANHOLE		
			- DRAINAGE MANHOLE		
			- DRY WELL		
			- CATCHBASIN MANHOLE		
			- CATCHBASIN		
			- DRAINAGE INVERT		
			- HEADWALL		
			- AIR VALVE		
			- WATER VALVE		
			- CURB STOP		
			- FIRE HYDRANT		

MONAGHAN
ENGINEERING & CONSULTING LTD.

3710B 28th Street, Vernon, BC, V1T 9X2 Ph: (250) 503-1023 Fax: (250) 503-1024

Scale	1:250
Date	DEC 2020
Designed	CH
Drawn	CFB
Checked	CH



CITY OF ENDERBY

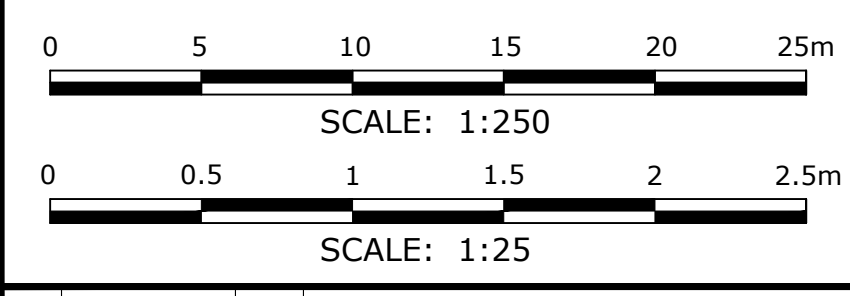
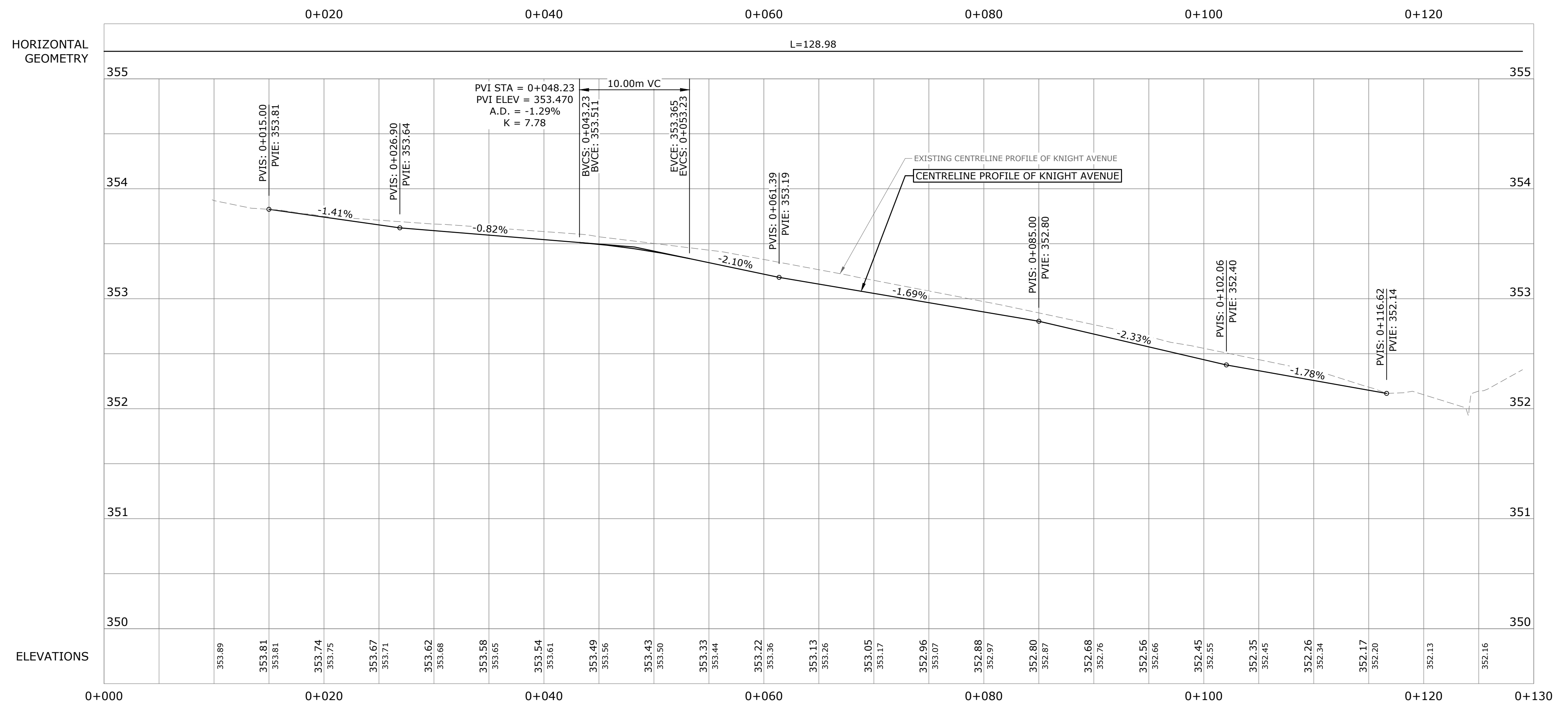
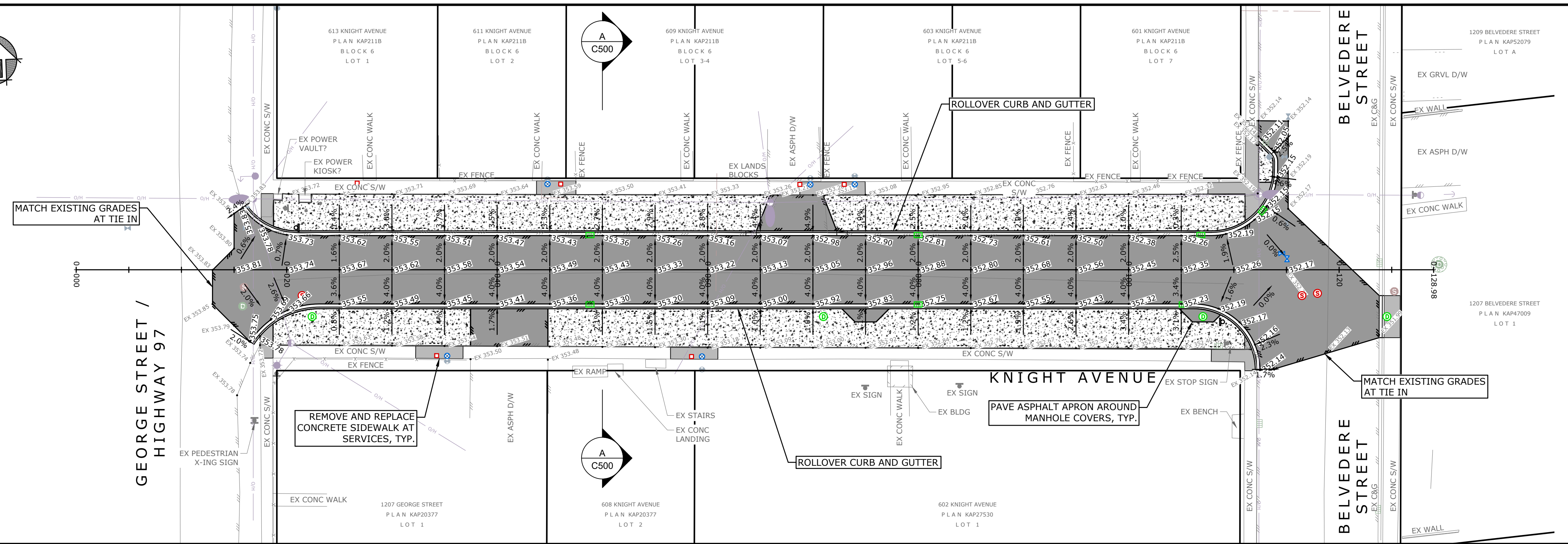
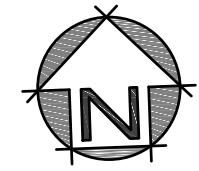
KNIGHT AVE RECONSTRUCTION

REMOVALS

PLAN

Project No.	1584.34
Client File No.	-
Sheet No.	3 OF 9
Drawing No.	C101
Rev.	A

75% DESIGN



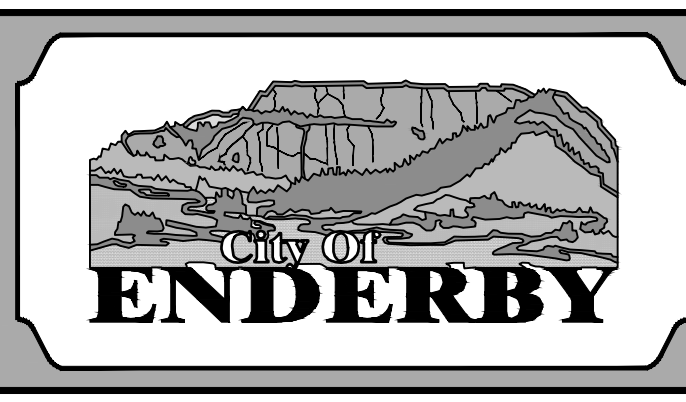
USER: caseyp
 CTB: moad-fulback.ctb
 LAYOUT: C200
 PLOTTED: 2021-01-14 - 10:24 AM
 XREFS: 1584.34-LEGL-E.dwg, 1584.34-PLNM-E.dwg, 1584.34-PLNM-N.dwg, 1584.34-DSGN-N.dwg
 IMAGES:
 FILE: z:\mead\projects\1584.34 - knight ave - cee\drawings\sheets\1584.34-plans.dwg

LEGEND: (EXISTING SYMBOLS SHOWN GREY/SOLID)

<ul style="list-style-type: none"> - EDGE OF ASPHALT - EDGE OF GRAVEL - FENCING - BUILDING - TOP OF BANK - BOTTOM OF BANK - DITCH - TREELINE - SANITARY - STORM DRAIN - WATER - GAS - HYDRO/TEL 	<ul style="list-style-type: none"> - GUY WIRE - ANCHOR POLE - HYDRO/TEL POLE - POLE W/ TRANSFORMER - DRY WELL - TEL TUB/Vault - SHAW CABLE TUB/Vault - JUNCTION BOX - SERVICE BOX - KIOSK - LOW POWER TRANSFORMER - TRAFFIC SIGNAL - STREET LIGHT 	<ul style="list-style-type: none"> - CAP - INSPECTION CHAMBER - SANITARY MANHOLE - DRAINAGE MANHOLE - DRY WELL - CATCHBASIN MANHOLE - CATCHBASIN - DRAINAGE INVERT - HEADWALL - AIR VALVE - WATER VALVE - CURB STOP - FIRE HYDRANT 	<ul style="list-style-type: none"> - BLOW-OFF - REDUCER - COUPLER - PROPERTY PIN - HUB - MONUMENT - BOREHOLE - SIGN - TREE
--	--	---	---

MONAGHAN
 ENGINEERING & CONSULTING LTD.
 3710B 28th Street, Ph: (250) 503-1023
 Vernon, BC, V1T 9X2 Fax: (250) 503-1024

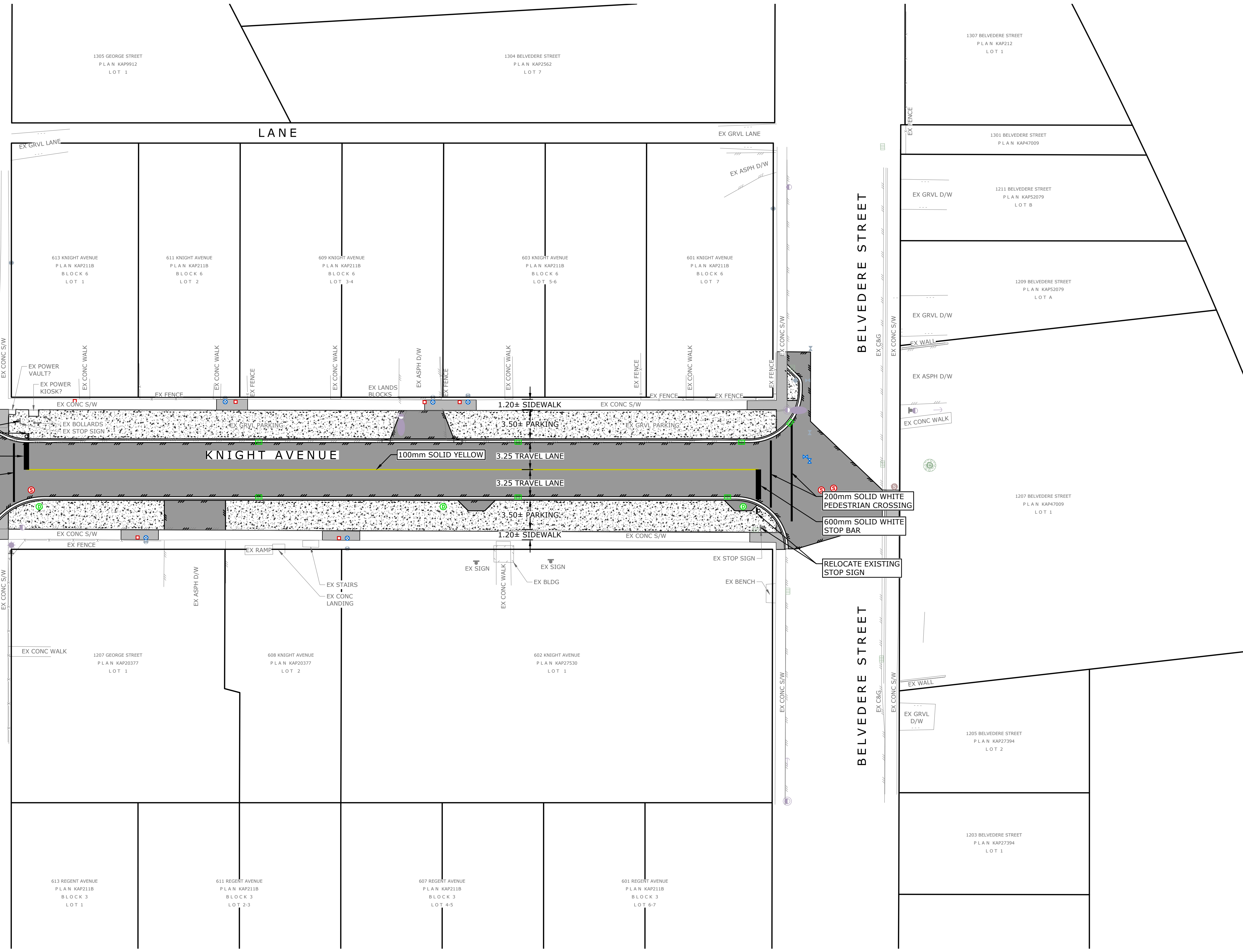
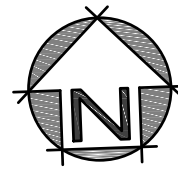
Scale	1:250
Date	DEC 2020
Designed	CH
Drawn	CFB
Checked	CH



CITY OF ENDERBY
 KNIGHT AVE RECONSTRUCTION
 GRADING
 PLAN

Project No.	1584.34
Client File No.	-
Sheet No.	4 OF 9
Drawing No.	C200
Rev.	A

7.5% DESIGN

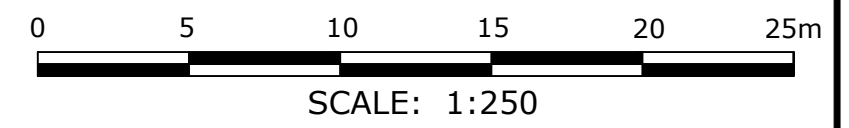


GEORGE STREET / HIGHWAY 97

BELVEDERE STREET

7.5% DESIGN

USER: caseyp
 CTB: moad-fu/iback.ctb
 XREFS: 1584.34-LEGL-E.dwg, 1584.34-PLNM-E.dwg, 1584.34-PLNM-N.dwg, 1584.34-DSGN-N.dwg
 LAYOUT: C201
 FILE: z:\mead\projects\1584.34 - knight ave - cse\drawings\sheets\1584.34-plans.dwg

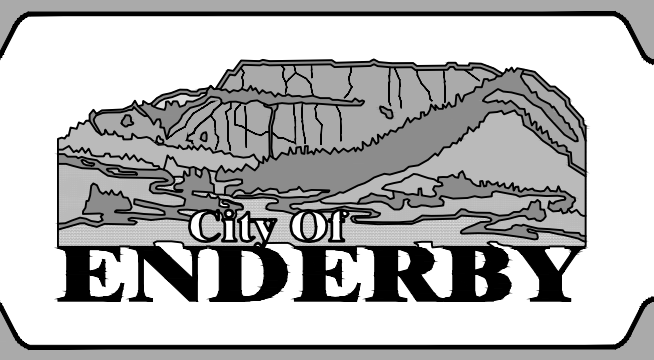


LEGEND: (EXISTING SYMBOLS SHOWN GREY/SOLID)	
	- EDGE OF ASPHALT
	- EDGE OF GRAVEL
	- FENCELINE
	- BUILDING
	- TOP OF BANK
	- BOTTOM OF BANK
	- DITCH
	- TREELINE
	- SANITARY STORM DRAIN
	- WATER
	- GAS
	- HYDRO/TEL
	- GUY WIRE
	- ANCHOR POLE
	- HYDRO/TEL POLE
	- POLE w/ TRANSFORMER
	- HYDRO TUB/VAULT
	- TEL TUB/VAULT
	- SHAW CABLE TUB/VAULT
	- JUNCTION BOX
	- SERVICE BOX
	- KIOSK
	- LOW POWER TRANSFORMER
	- TRAFFIC SIGNAL
	- STREET LIGHT
	- CAP
	- INSPECTION CHAMBER
	- SANITARY MANHOLE
	- DRAINAGE MANHOLE
	- DRY WELL
	- CATCHBASIN MANHOLE
	- CATCHBASIN
	- DRAINAGE INVERT
	- HEADWALL
	- AIR VALVE
	- WATER VALVE
	- CURB STOP
	- FIRE HYDRANT
	- BLOW-OFF
	- REDUCER
	- COUPLER
	- PROPERTY PIN
	- HUB
	- MONUMENT
	- BOREHOLE
	- SIGN
	- TREE



3710B 28th Street, Vernon, BC, V1T 9X2
 Ph: (250) 503-1023
 Fax: (250) 503-1024

Scale	1:250
Date	DEC 2020
Designed	CH
Drawn	CFB
Checked	CH

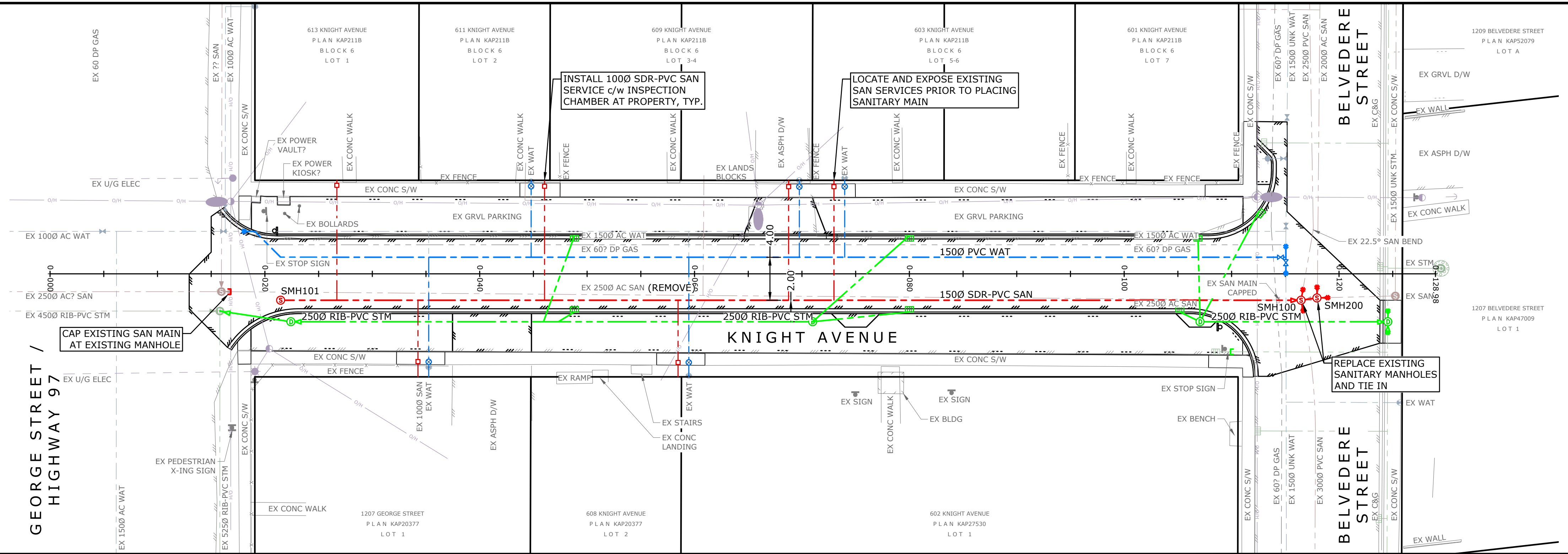
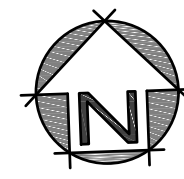


CITY OF ENDERBY
 KNIGHT AVE RECONSTRUCTION
 PAVEMENT MARKINGS
 & SIGNAGE

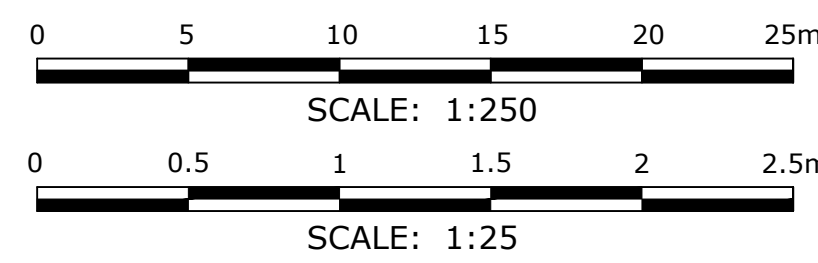
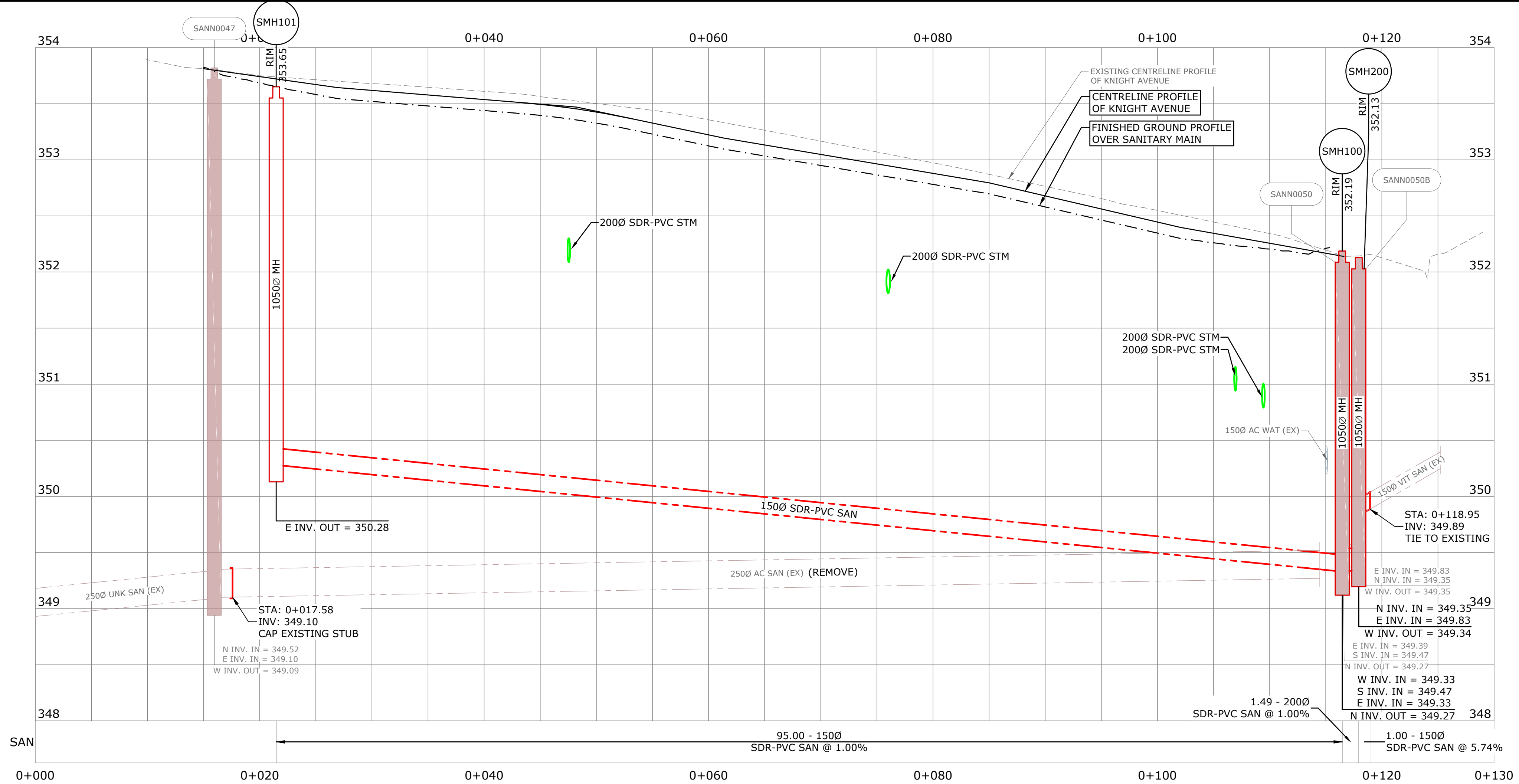
Project No.	1584.34
Client File No.	-
Sheet No.	5 OF 9
Drawing No.	C201
Rev.	A

NOTES

SANITARY SERVICE LOCATIONS AND DEPTHS TO BE CONFIRMED PRIOR TO MAIN INSTALLATION.



SANITARY MANHOLE SUMMARY			
MANHOLE ID:	DETAILS:	PIPES IN:	PIPES OUT
SMH100	10500 MH RIM = 352.19	1500 SDR-PVC INV IN = 349.33 3000 SDR-PVC INV IN = 349.47 2000 SDR-PVC INV IN = 349.33	2500 SDR-PVC INV OUT = 349.27
SMH101	10500 MH RIM = 353.65		1500 SDR-PVC INV OUT = 350.28
SMH200	10500 MH RIM = 352.13	2000 SDR-PVC INV IN = 349.35 1500 SDR-PVC INV IN = 349.83	2000 SDR-PVC INV OUT = 349.34



LEGEND: (EXISTING SYMBOLS SHOWN GREY/SOLID)	
	- EDGE OF ASPHALT
	- EDGE OF GRAVEL
	- FENCELINE
	- BUILDING
	- TOP OF BANK
	- BOTTOM OF BANK
	- DITCH
	- TREELINE
	- SANITARY
	- STORM DRAIN
	- WATER
	- GAS
	- HYDRO/TEL
	- GUY WIRE
	- ANCHOR POLE
	- HYDRO/TEL POLE
	- POLE w/ TRANSFORMER
	- DRY WELL
	- CATCHBASIN MANHOLE
	- CATCHBASIN
	- DRAINAGE INVERT
	- HEADWALL
	- AIR VALVE
	- WATER VALVE
	- CURB STOP
	- TRAFFIC SIGNAL
	- STREET LIGHT
	- BLOW-OFF
	- REDUCER
	- COUPLER
	- PROPERTY PIN
	- HUB
	- MONUMENT
	- BOREHOLE
	- SIGN
	- TREE

MONAGHAN
ENGINEERING & CONSULTING LTD.

3710B 28th Street, Vernon, BC, V1T 9X2 Ph: (250) 503-1023 Fax: (250) 503-1024

Scale	1:250
Date	DEC 2020
Designed	CH
Drawn	CFB
Checked	CH



CITY OF ENDERBY

KNIGHT AVE RECONSTRUCTION

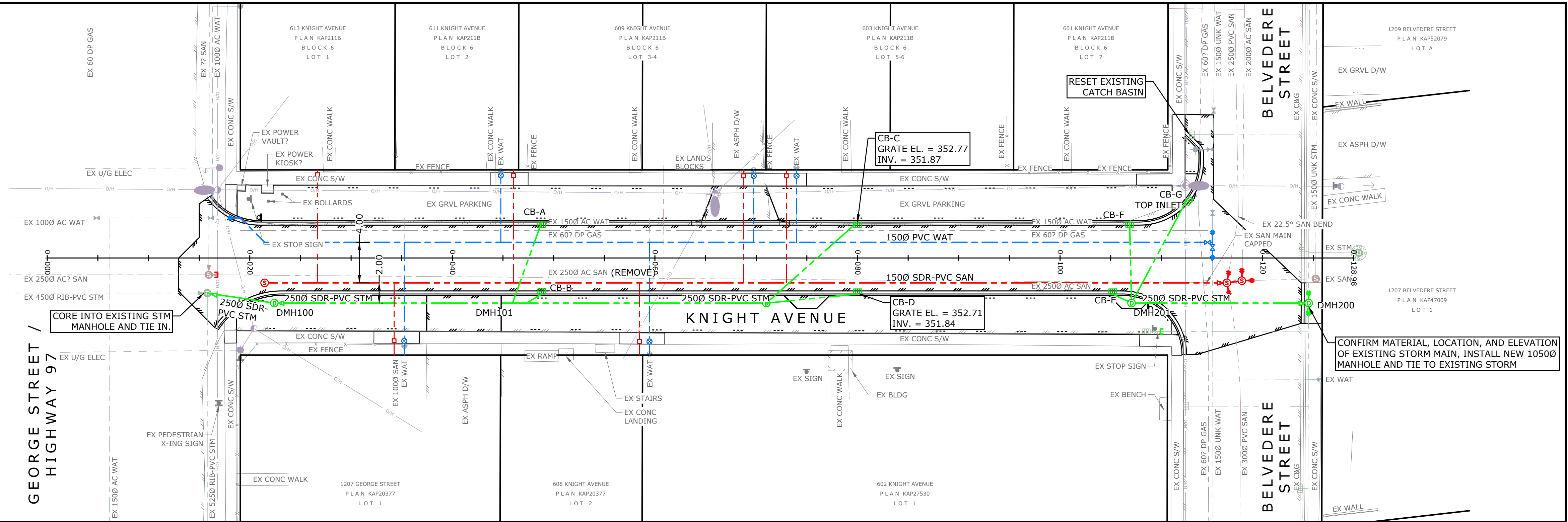
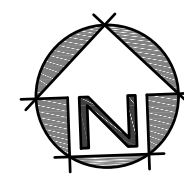
SANITARY PLAN & PROFILE

FROM STA. 0+000 TO 0+130

Project No.	1584.34
Client File No.	-
Sheet No.	6 OF 9
Drawing No.	C300
Rev.	A

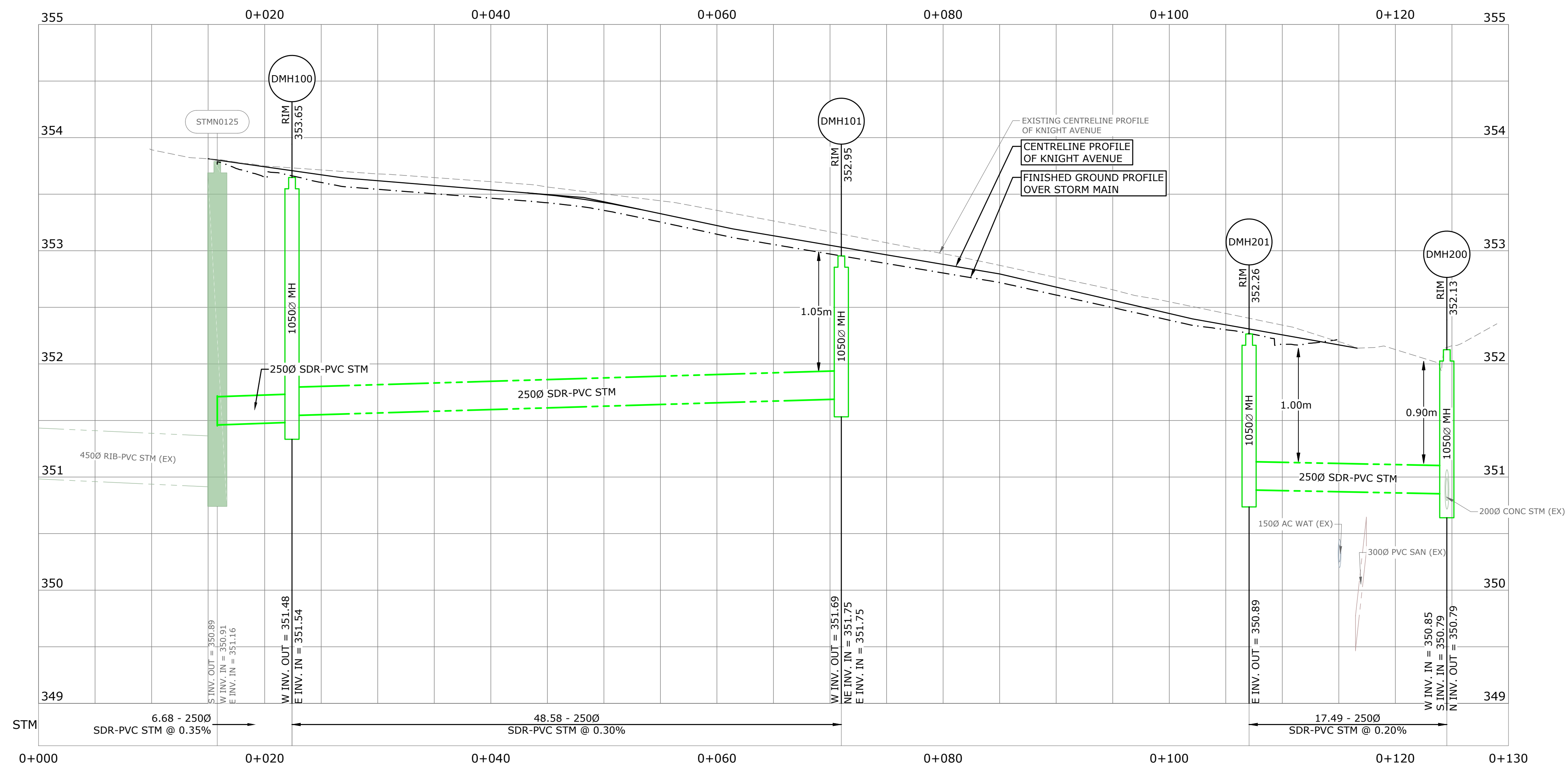
USER: casevp
 CTR: moad-fulback.ctb
 LAYOUT: C300
 PLOTTED: 2021-01-14 - 10:24 AM
 XREFS: 1584.34-LEGL-E.dwg, 1584.34-PLUM-E.dwg, 1584.34-PLUM-N.dwg, 1584.34-DSGN-N.dwg
 IMAGES: FILE: z:\mead\projects\1584.34 - knight ave - cse\drawings\sheet\1584.34-plans.dwg

75% DESIGN



STORM MANHOLE SUMMARY			
MANHOLE ID:	DETAILS:	PIPES IN:	PIPES OUT
DMH100	10500 MH RIM = 353.65	2500 SDR-PVC INV IN = 351.54	2500 SDR-PVC INV OUT = 351.48
DMH101	10500 MH RIM = 352.95	2000 SDR-PVC INV IN = 351.75 2000 SDR-PVC INV IN = 351.75	2500 SDR-PVC INV OUT = 351.69
DMH200	10500 MH RIM = 352.13	2500 SDR-PVC INV IN = 350.85 3000 RIB-PVC INV IN = 350.79	3000 RIB-PVC INV OUT = 350.79
DMH201	10500 MH RIM = 352.26		2500 SDR-PVC INV OUT = 350.89
STMN0125	15000 MH RIM = 353.79	4500 RIB-PVC INV IN = 350.91 2500 PVC INV IN = 351.16	5250 RIB-PVC INV OUT = 350.89

CATCHBASIN SUMMARY	
CATCHBASIN ID:	DETAILS:
CB-A	900 Side Inlet Catch Basin GRATE = 353.34
CB-B	900 Side Inlet Catch Basin GRATE = 353.27
CB-C	900 Side Inlet Catch Basin GRATE = 352.77
CB-D	900 Side Inlet Catch Basin GRATE = 352.71
CB-E	900 Side Inlet Catch Basin GRATE = 352.19
CB-F	900 Side Inlet Catch Basin GRATE = 352.19
CB-G	750 Top Inlet Catch Basin GRATE = 352.11



LEGEND: (EXISTING SYMBOLS SHOWN GREY/SOLID)	
	EDGE OF ASPHALT
	EDGE OF GRAVEL
	FENCELINE
	BUILDING
	TOP OF BANK
	BOTTOM OF BANK
	DITCH
	TREELINE
	SANITARY
	STORM DRAIN
	WATER
	GAS
	HYDRO/TEL
	GUY WIRE
	ANCHOR POLE
	HYDRO/TEL POLE
	POLE W/ TRANSFORMER
	HYDRO TUB/VAULT
	TEL TUB/VAULT
	SHAW CABLE TUB/VAULT
	JUNCTION BOX
	SANITARY INVERT
	HEADWALL
	AIR VALVE
	WATER VALVE
	CURB STOP
	FIRE HYDRANT
	CAP
	INSPECTION CHAMBER
	SANITARY MANHOLE
	DRAINAGE MANHOLE
	DRY WELL
	CATCHBASIN MANHOLE
	CATCHBASIN
	DRAINAGE INVERT
	HEADWALL
	SERVICE BOX
	KIOSK
	LOW POWER TRANSFORMER
	TRAFFIC SIGNAL
	STREET LIGHT
	BLOW-OFF
	REDUCER
	COUPLER
	PROPERTY PIN
	HUB
	MONUMENT
	BOREHOLE
	SIGN
	TREE

MONAGHAN
 ENGINEERING & CONSULTING LTD.

3710B 28th Street, Ph: (250) 503-1023
 Vernon, BC, V1T 9X2 Fax: (250) 503-1024

Scale: 1:250
 Date: DEC 2020
 Designed: CH
 Drawn: CFB
 Checked: CH

CITY OF ENDERBY
 KNIGHT AVE RECONSTRUCTION
 STORM PLAN & PROFILE
 FROM STA. 0+000 TO 0+130

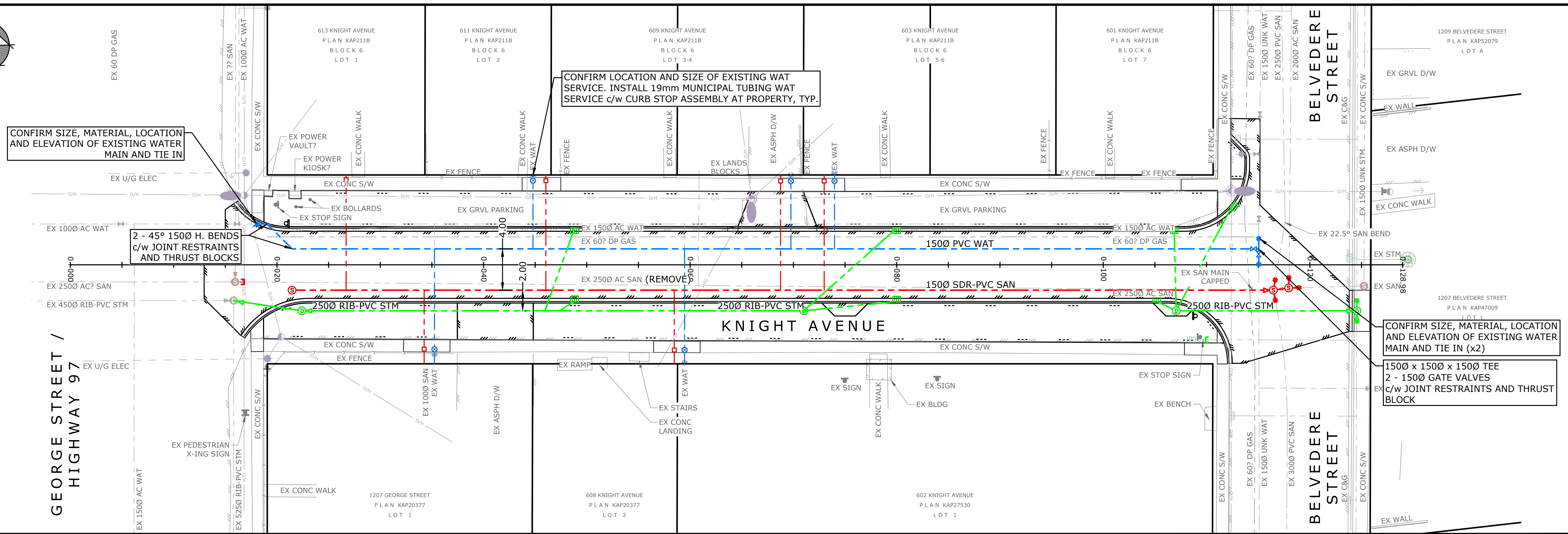
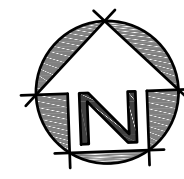
Project No.	1584.34
Client File No.	-
Sheet No.	7 OF 9
Drawing No.	C301
Rev.	A

USER: casevp
 CTB: moad-fulback.ctb
 LAYOUT: C301
 PLOTTED: 2021-01-14 - 10:25 AM
 XREFS: 1584.34-LEGL-E.dwg, 1584.34-PLAN-E.dwg, 1584.34-PLAN-N.dwg, 1584.34-PLAN-S.dwg, 1584.34-PLAN-W.dwg
 IMAGES:
 FILE: z:\mead\projects\1584.34 - Knight ave - cse\drawings\sheets\1584.34-plans.dwg

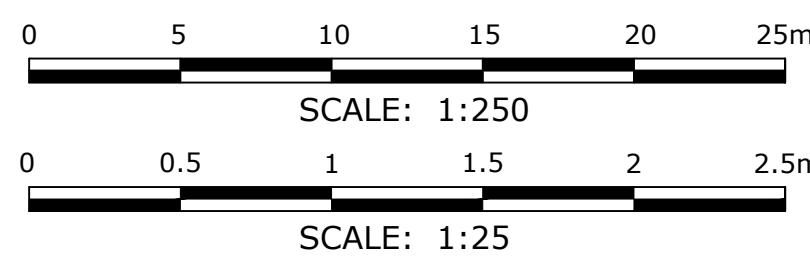
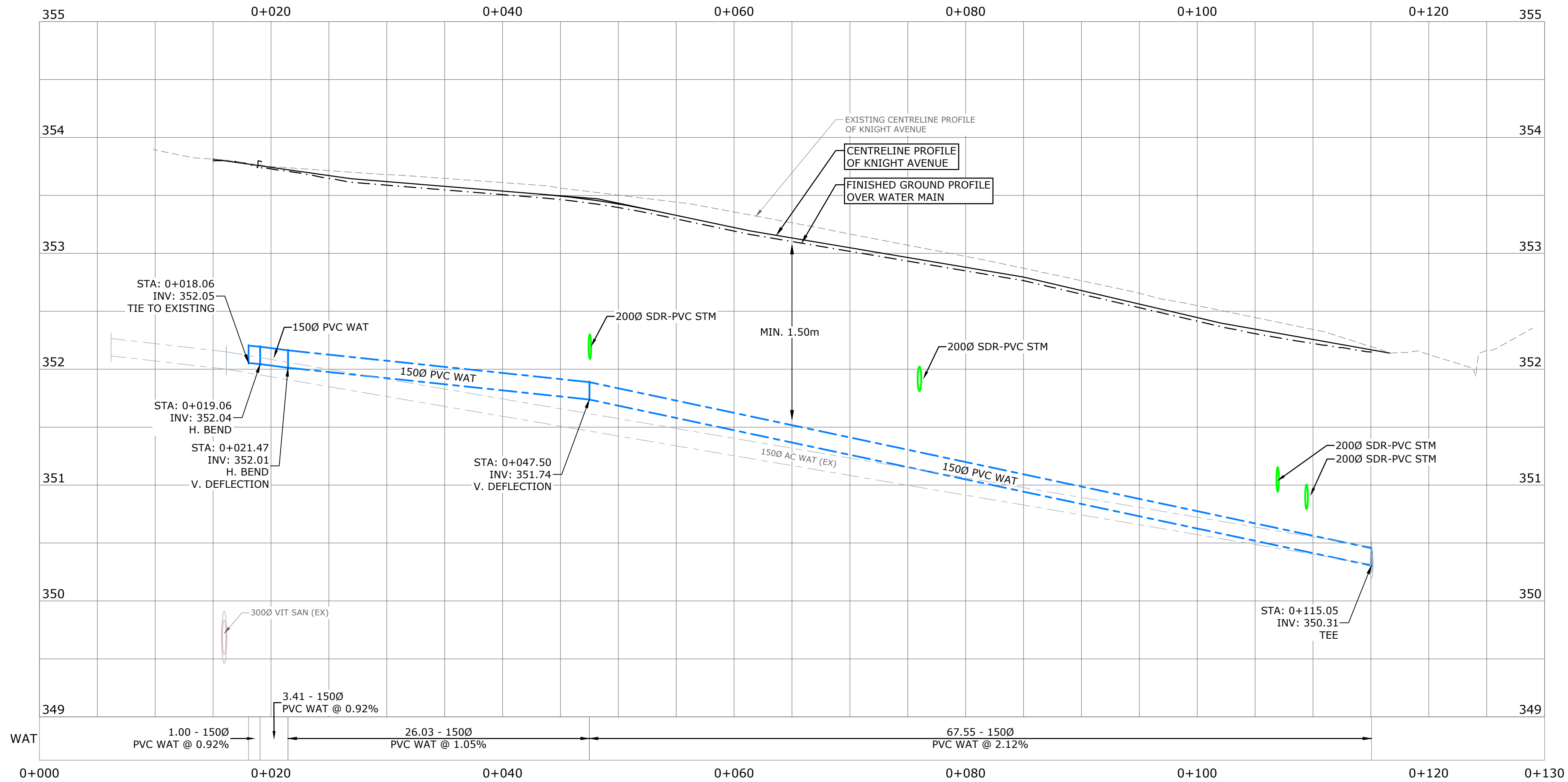
7.5% DESIGN

NOTES:

- WHERE 3.0m HORIZONTAL AND/OR 0.45m CLEAR SEPARATION (OUTSIDE OF PIPE TO OUTSIDE OF PIPE) FROM EXISTING SANITARY AND/OR STORM MAINS CANNOT PHYSICALLY BE ACHIEVED, CONTRACTOR TO NOTIFY ENGINEER AND ENSURE THAT ALL WATERMAIN JOINTS ARE WRAPPED WITH CANUS JOINTWRAP™.
- ALL EXISTING WATERMAINS TO BE ABANDONED AND CAPPED NEAR PROPOSED TIE-INS. ALL EXISTING GATE VALVES AND CURB STOPS TO BE ABANDONED, SHALL HAVE BOX AND RISER REMOVED, VALVE CLOSED AND BURIED.
- ALL METALLIC FITTINGS (INCLUDING EPOXY COATED) TO BE FULLY PROTECTED FROM CORROSION THROUGH THE USE OF A PETROLATUM WAX TAPE COATING SYSTEM (DENSO PASTE AND TAPE OR APPROVED EQUAL) INSTALLED IN ACCORDANCE WITH THE LATEST AWWA C217 STANDARD AND THE MANUFACTURER'S SPECIFICATIONS.
- FOR WATERMAIN CROSSING DETAIL, SEE DWG C500.
- FOR RESTRAINED LENGTHS AND THRUST BLOCK SIZES AT WATER FITTINGS, REFER TO TABLE ON DWG C400.



DIAMETER (mm)	TYPE	LENGTH (m)		MINIMUM THRUST BLOCK AREAS (m ²)
		MAIN	BRANCH	
150	45° BEND	2.0	N/A	0.20
150x100	REDUCER	6.0	N/A	0.15
150x150x150	TEE	2.0	2.0	0.25



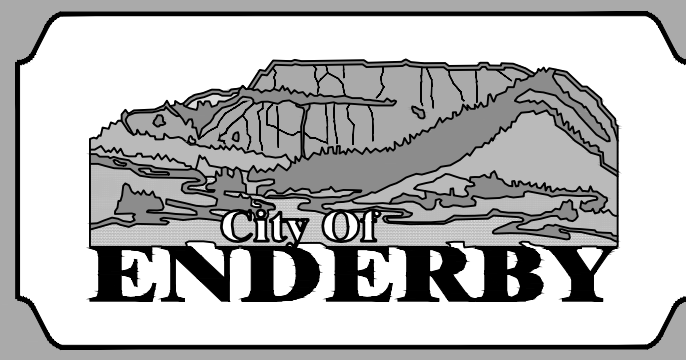
LEGEND: (EXISTING SYMBOLS SHOWN GREY/SOLID)

- EDGE OF ASPHALT	- GUY WIRE	L - CAP	+- BLOW-OFF
- EDGE OF GRAVEL	- ANCHOR POLE	□ - INSPECTION CHAMBER	◊ - REDUCER
- FENCELINE	- HYDRO/TEL POLE	○ - SANITARY MANHOLE	# - COUPLER
- BUILDING	- POLE w/ TRANSFORMER	○ - DRAINAGE MANHOLE	• - PROPERTY PIN
- BOTTOM OF BANK	- HYDRO TUB/VAULT	○ - DRY WELL	● - MONUMENT
- TEL TUB/VAULT	- TEL TUB/VAULT	○ - CATCHBASIN MANHOLE	○ - BOREHOLE
- DITCH	- SHAW CABLE TUB/VAULT	○ - CATCHBASIN	○ - SIGN
- TREELINE	- JUNCTION BOX	△ - DRAINAGE INVERT	○ - TREE
- SANITARY	- SERVICE BOX	△ - HEADWALL	
- STORM DRAIN	- AIR VALVE	○ - WATER VALVE	
- WATER	- LOW POWER TRANSFORMER	○ - CURB STOP	
- GAS	- TRAFFIC SIGNAL	○ - FIRE HYDRANT	
- HYDRO/TEL	- STREET LIGHT		

MONAGHAN
ENGINEERING & CONSULTING LTD.

3710B 28th Street,
Vernon, BC, V1T 9X2

Ph: (250) 503-1023
Fax: (250) 503-1024



CITY OF ENDERBY

KNIGHT AVE RECONSTRUCTION

WATER PLAN & PROFILE

FROM STA. 0+000 TO 0+130

Project No.	1584.34
Client File No.	-
Sheet No.	8 OF 9
Drawing No.	C400
Rev.	A

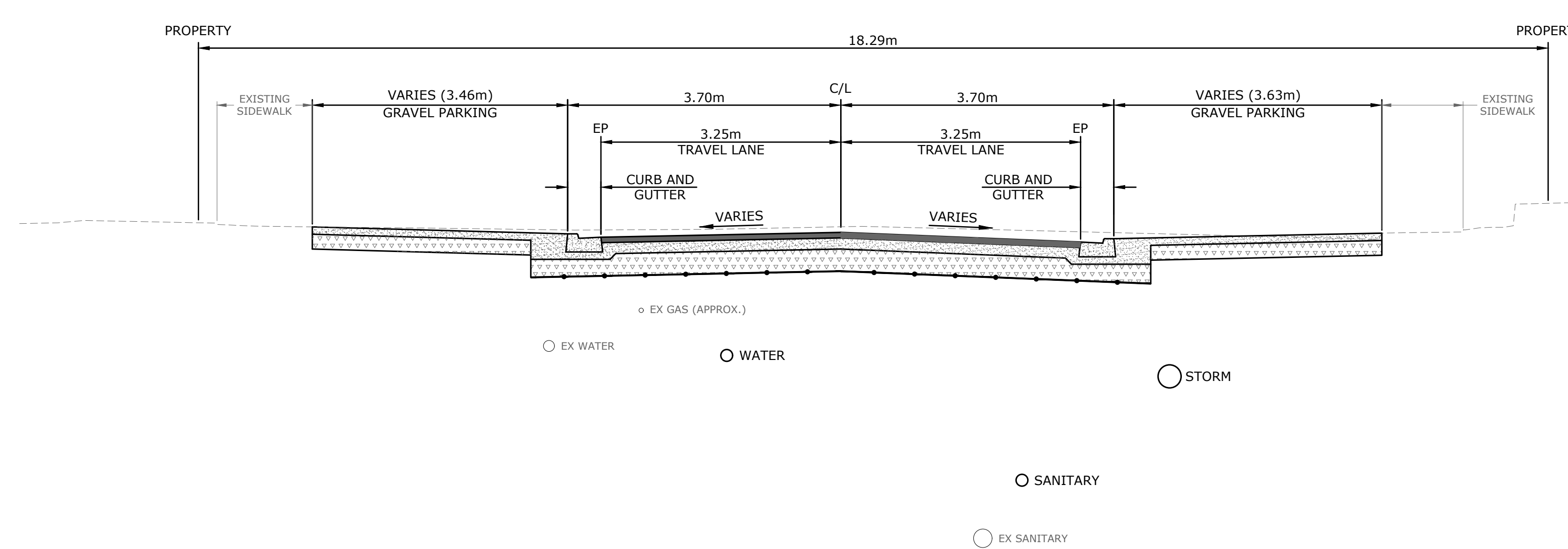
USER: casevp
 CTB: moad-fulback.ctb
 LAYOUT: C400
 PLOTTED: 2021-01-14 - 10:25 AM
 XREFS: 1584.34-LEGL-E.dwg, 1584.34-PLUM-E.dwg, 1584.34-PLUM-N.dwg, 1584.34-DSGN-N.dwg
 IMAGES: 21-meand-projects\1584.34 - Knight ave - cse\drawings\sheets\1584.34-plans.dwg

7.5% DESIGN

NOTES:

- ROAD STRUCTURE - KNIGHT AVENUE AND BELVEDERE STREET
- 75mm OF MMCD UPPER COURSE #1 HOT MIX ASPHALT
 - 150mm OF 19mm MINUS CRUSHED BASE COURSE
 - 300mm OF 75mm MINUS SELECT GRANULAR SUBBASE
 - NILEX TYPE 1 BIAXIAL GEOGRID (OR APPROVED EQUIVALENT)
 - PREPARED SUBGRADE (REFER TO GEOTECHNICAL INVESTIGATIONS REPORT)

- ROAD STRUCTURE - HIGHWAY 97/GEORGE STREET
- ??mm OF ?? ASPHALT
 - ??mm OF ?? BASE COURSE
 - ??mm OF ?? SUBBASE
 - PREPARED SUBGRADE (REFER TO GEOTECHNICAL INVESTIGATIONS REPORT)



KNIGHT AVE TYPICAL SECTION
SCALE: N.T.S.

USER: casevp
 CTN: moad-fu/iback.ctb
 LAYOUT: C500
 PLOTTED: 2021-01-14 - 10:25 AM
 XREFS: 1584.34-LEGL-E.dwg, 1584.34-PLNM-E.dwg, 1584.34-PLNM-N.dwg, 1584.34-DSGN-N.dwg
 IMAGES:
 FILE: z:\mead\projects\1584.34 - knight ave - cse\drawings\sheets\1584.34-plans.dwg

Rev.	Date	By	Description
A	2021-JAN-14	CFB	75% DESIGN SUBMISSION

LEGEND: (EXISTING SYMBOLS SHOWN GREY/SOLID)

<ul style="list-style-type: none"> - EDGE OF ASPHALT - EDGE OF GRAVEL - FENCELINE - BUILDING - TOP OF BANK - BOTTOM OF BANK - DITCH - TREELINE - SANITARY - STORM DRAIN - WATER - GAS - HYDRO/TEL 	<ul style="list-style-type: none"> - GUY WIRE - ANCHOR POLE - HYDRO/TEL POLE - POLE W/ TRANSFORMER - HYDRO TUB/VAULT - TEL TUB/VAULT - SHAW CABLE TUB/VAULT - JUNCTION BOX - SERVICE BOX - KIOSK - LOW POWER TRANSFORMER - TRAFFIC SIGNAL - STREET LIGHT 	<ul style="list-style-type: none"> - CAP - INSPECTION CHAMBER - SANITARY MANHOLE - DRAINAGE MANHOLE - DRY WELL - CATCHBASIN MANHOLE - CATCHBASIN - DRAINAGE INVERT - HEADWALL - AIR VALVE - WATER VALVE - CURB STOP - FIRE HYDRANT 	<ul style="list-style-type: none"> - BLOW-OFF - REDUCER - COUPLER - PROPERTY PIN - HUB - MONUMENT - BOREHOLE - SIGN - TREE
--	---	---	---

MONAGHAN
 ENGINEERING & CONSULTING LTD.
 3710B 28th Street, Ph: (250) 503-1023
 Vernon, BC, V1T 9X2 Fax: (250) 503-1024

Seal	AS NOTED
Date	DEC 2020
Designed	CH
Drawn	CFB
Checked	CH



CITY OF ENDERBY
 KNIGHT AVE RECONSTRUCTION
 TYPICAL SECTIONS
 & DETAILS

Project No.	1584.34
Client File No.	-
Sheet No.	9 OF 9
Drawing No.	C500
Rev.	A

75% DESIGN