

2017
VISITORS
GUIDE

Exploring **ENDERBY**

BRITISH COLUMBIA , CANADA



www.exploringenderby.com



Enderby & District
CHAMBER OF COMMERCE

Where the Shuswap Meets the Okanagan



Inside the guide

- 04 EVENTS
- 08 HISTORY
- 11 SPLATSIN
- 15 DOWNTOWN MAP
- 16 MUSIC & MOVIES
- 19 ARTS
- 20 RURAL & FARM
- 24 PARKS
- 31 CLIFFS TRAIL
- 35 AREA MAP
- 36 KIC & RIVER
- 40 LAKES
- 47 WINTER ACTIVITIES
- 48 GOLF
- 51 EVENTS & RENTALS
- 52 WINERIES
- 60 ACCOMMODATIONS

Visitor Info

**Enderby & District
Chamber of Commerce**
702 Railway St.
250-838-6727

Enderby City Hall
619 Cliff Ave.
250-838-7230

Enderby & District Museum
901 George St. (Hwy 97A)
250-838-7170

Enderby Library
514 Cliff Ave.
250-838-6488

**Splatsin First Nation Band
Office**, 5775 Old Vernon Rd.
250-838-6496

Stats & Facts

Enderby, BC
Incorporated 1905
Population:
Enderby 2,932 (2011)
Area F: 3,939
Land Area (sq. km):
Enderby 4.26
Area F: 1,769



Locals are super proud of our four distinct seasons that offer an abundance of recreational and leisure activities. Our region, which is part of the Splatsin First Nation, includes many Lakes and the beautiful Shuswap River. If you enjoy the outdoors you are in the right place! Take time and hike the Enderby Cliffs for an incredible view of the valley, or venture a bit further to beautiful Mabel Lake. The Visitor Information Center can answer all your questions and lead you to many great experiences. Check in at Riverside RV Park and go early to get your space for the very popular Starlight Drive In. When you stop at any of the local businesses you will surely find the Enderby Pride. We would like to thank you for visiting and we will leave it up to you to tell your friends and families about the incredible little City that you discovered.

Mayor of Enderby, Greg McCune



It isn't often you find a place like Enderby. Rural, laid back charm partnered with the right amenities one needs to be able to thrive in business and in life. An area small enough in scale that neighbours are literally family and friends, while containing more than enough heart to ensure the unwavering sense of community is felt by all who live and visit here. Enjoy a walk in downtown Enderby, check out the local markets or

find yourself celebrating the good times at one of our many festivals, you'll quickly come to discover that it is the people who make up the heart of Enderby & District. The awe-inspiring natural environment is our collective body and the Shuswap River is what connects us all. Situated on the traditional lands of the Splatsin First Nation, we share a common philosophy that we are all stewards of this wonderful land we are fortunate to call home. And we invite you to come experience all it has to offer.

President of EDCC, Darren Robinson

Cover & Inside Photos by:
- other contributed images are noted

Darren Robinson
PHOTOGRAPHY

Print & Design by:



TRANSITION MARKETING SERVICES

& LAKESIDE PRINTING



Enderby & District
CHAMBER OF COMMERCE

Exploring Enderby is published annually by the Enderby & District Chamber of Commerce. Copyright and/or rights subsist in all materials appearing in this guide, including advertisements.



festivals & EVENTS



BRIGITTE JOHNSON



GOLD PANNING CHAMPIONSHIP

MAY LONG WEEKEND
MAY 19, 20, 21

Riverside RV Park, Enderby

BC's Open Competition
Open to all skill levels

On-site Food & Camping
Pancake Breakfast Sat & Sun
Raffle Tickets • Pan for Gold

FAMILY EVENT

Come watch or join in the fun!

FREE ADMISSION

26th

ANNUAL

For more info call 250-679-0009
or email: info@vernongoldpanning.com

Celebrate Canada's 150th June 30 to July 2, 2017

Friday 4 pm to 9 pm

Arts & Historical Displays • EDAC Live Music - "ELVIS"
Food Vendors • Funtastic SloPitch

Saturday 9 am to 10 pm

Lions Club Pancake Breakfast - Gazebo - Riverside Park
Funtastic Softball (all day) Riverside Park

PARADE - 11 am to noon

Canada Day Party - 1pm - Barnes park
Cake • Food Vendors • Kids Games • Splatsin Displays
Car Show • Band • Free Swim 1-4pm
Street Market & Music - Cliff Ave 9am to 2pm
Displays, Theatre/Drum Core - 7 to 9pm - Splatsin Centre

FIREWORKS

by E&D Fire Rescue - 9:30 to 10 pm

Sunday 10 am to 12 noon

(Arts and Historical Displays)
Beer Garden - Riverside Park • Funtastic SloPitch (all day)

4 Days • 40 Teams • 5 Games Guaranteed

This years theme **150 Years of Canadian Historical Moments**

Play Ball! *Games & Good Times!*

BEVERAGE GARDENS
Friday to Monday with Barrel House Productions
INFO: 250-838-7123 • judy@enderbyjewellers.com

Enderby 19th Annual
JUNE 30 - JULY 3
FUNTASTIC
Building a Better Community



GRINDROD GARLIC FESTIVAL

August 20, 2017

9am - 4 pm • \$3

GRINDROD PARK

local garlic • art • crafts • live music
free workshops • kids activities
garlic braiding & growing





MAY

May 5: Starlight Drive In Opens

May 14: Mother's Day Pancake Breakfast
Kingfisher Hall 8am-10:30am

May 14: Mother's Day Pancake Breakfast
Riverside Park (Lions Gazebo)

May 19 - 21: 26th Annual BC Open Gold Panning Competition
Riverside RV Park

May 27: Hand's Up Fundraiser Caravan Farm Theatre

JUNE

June 18: Father's Day

June 18: Music by the River 7pm Belvidere Park, Enderby

June 30 - July 2: Canada 150 Celebration

June 30 - July 2: Funtastic Ball Tournament
Riverside Ball Diamonds

JULY

July 1: Canada Day

July 8: Strawberry Tea 1pm-3pm Kingfisher Hall

July 9: Music by the River 7pm Putula Park, Mara

July 10-13: Accordion Get Together Riverside RV Park

July 22: Jumble Dance Live music 9pm-1:30am Kingfisher Hall

July 22 - July 23: Grindrod Days

July 23: Annual Learn To Fish Kingfisher Interpretive Center

July 29: The Arts Festival Downtown Enderby 9am-4pm

July 29: Enderbeer and Wine Festival Riverside Park

July 30: Music by the River 7pm Belvidere Park, Enderby

AUGUST

August 20: Grindrod Garlic Festival

August 20: Music by the River at the Grindrod Garlic Festival, Grindrod TBA

August 25: Friday Night Lights

August 27: Music by the River 3pm Belvidere Park, Enderby

August 30 - Sept 4: Interior Provincial Exhibition
Armstrong Fairgrounds

SEPTEMBER

September 4: BC Rivers Day

September: Pumpkin Festival Green Croft Gardens, date TBA

September: River Clean Up Day, date TBA

OCTOBER

October 7 - 8: Annual Salmon Egg Take Kingfisher Int. Center

October 28: Annual Walk of Terror Caravan Farm Theatre

October 31: Community Halloween Celebration

DECEMBER

December 1 - 3: Christmas Light up

December 8 - 10: Church Candle Walk

December: Winter Sleigh Ride Caravan Farm Theatre TBA

**Enderby Evening
Open Air Market**

Every Thursday
5 to 8pm

**Enderby Open
Air Market**

April to October
Every Friday
8:30am to 12:30pm

**Kingfisher
Farmers Market**

June 20 - Sept.
Every Wednesday
11am to 1pm



We are very proud of our rich and diverse history

So proud, in fact, that we are always looking for ways in which we can cherish, celebrate, and honour it. Immerse yourself in over a hundred years of history and stories by visiting the Enderby & District Museum, which welcomes visitors year round. Tour the 1930s homestead and time warp yourself into a bygone era amidst historic collections of tools, household items, machinery and imagery. Experience what those days were really like by grinding wheat, making rope, or taking in a silent movie. There are also several items available for purchase, perfect for those who wish to take a piece of history home with them!

www.enderbymuseum.ca

901 George Street • 250-838-7170

Summer Hours: 10 am – 4 pm Tue.- Sat.

Winter Hours: 12 pm – 4 pm Tue.- Sat.

Toonie Tuesday
Draught Beer

•

Thursday
Jam Session
1:00 - 3:00
Everyone Welcome

•

Thursday
Mini-Meat Draw
3:30

•

Saturday
Meat Draw 2:30

•

Saturday Dance
2nd & 4th Saturday
Every Month
7:00pm

Legion

909 Belvedere St. Enderby
250-838-7283
www.enderbylegion.com

*Everyone is
Welcome*



Deep Creek Tool Museum

Get a big thrill with a visit to the Deep Creek Tool Museum. Take a guided tour of the extensive collection of old tools and household items that exemplify an era when tools played a very important role in people's lives. Also see the world's largest reel lawnmower developed and fabricated by curator Herb Higginbottom.

traditional SPLATSIN HERITAGE



The Splatsin

are the most southern tribe of the Shuswap Nation, the largest Interior Salish speaking First Nation in Canada whose aboriginal territory stretches from the BC/Alberta border near the Yellowhead Pass to the plateau west of the Fraser River, southeast to the Arrow Lakes and to the upper reaches of the Columbia River.



Local history has its beginnings with the Splatsin people of the Secwepemc Nation, which has occupied its traditional territory in the Shuswap for thousands of years. Splatsin is the Yucwmenlúcwu (caretaker of the land) on behalf of the Secwepemc nation.

The Shuswap River was an integral transportation route used to travel from village to village and to food gathering areas of Splatsin. An annual camp at Cooke Creek Campground on the Shuswap River east of Enderby each August recalls those traditions and instills Splatsin culture in future generations.

Splatsin has a population of almost 1,000, both on and off reserve. The Splatsin are governed by an elected Chief and Councillors who serve two-year terms.

Splatsin Today and Tomorrow

The Splatsin community supports a daycare, school, health centre and are their own taxing authority, allowing Splatsin to manage land and collect taxes from non-status lessees. The new Splatsin Community Centre is the hub of the community, providing space for cultural events, conferences, concerts, banquets and educational and recreational activities plus employment. The beautiful structure features a living roof, traditional pictographs on the exterior, an arbour/fire pit area and interior design honouring Splatsin elders. There is a full kitchen and a basement area for Splatsin members to process wild game. A boardroom and administrative offices are located on Hwy. 97A. There is a fully stocked convenience store and an art gallery filled with unique and beautiful Aboriginal arts and crafts. The building is adorned with detailed carvings on massive timbers.

The Splatsin Development Corporation (SDC) oversees or is partnered with successful businesses, municipalities and forest companies in various enterprises within traditional Splatsin territory which include a forest management company, the Esso station and Tim Hortons, Quilakwa RV Park, a construction and environmental services company, and the Monashee Community Forest.



Splatsin Tsm7aksált'n

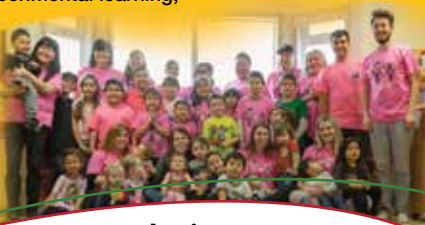
(Splatsin Teaching Centre) Society

2730 Canyon Rd, Enderby, BC, V0E 1V3

- Enhanced child care programs for children aged 0 to 12 years old that are infused with the Splatsin Language and Culture
- Rates the same as government subsidy
- Breakfast, hot lunch & snack included daily
- Music, field trips, art, experimental learning, cultural programming
- Age appropriate early childhood development curriculum
- Large outdoor play spaces with fully secure building & yard

Providing affordable, quality childcare since 1990

Provincially licensed group childcare centre open to all children



www.splatsin.org

Fully qualified, licensed and professional staff

Phone: 250-838-6404 Fax: 250-838-6429

email: splatsin@telus.net

discover DOWNTOWN



Find your downtown treasure

Shop for beautiful jewellery, unique gift items, men's and women's clothing, furniture, gorgeous flowers and great bargains in downtown Enderby.

Dine indoors or out at one of several restaurants in the downtown core. Get a manicure and pedicure, stop for coffee, check out the local real estate listings, find a special antique, visit the library, do some banking, or go grocery shopping – all within a two-block radius. A hardware store, bakery, gym, restaurants, and a thriving small industrial area are all within walking distance of the main street.



Keith Jack

Tree of Life

The Tree of Life is found in many cultures. It represents the natural law of life and the interconnection of all living things. The tree is a powerful and ancient symbol with branches weaving through time and mythology. Grow with the strength and wisdom of the ages and enjoy fulfillment in a fruitful life.



ENDERBY JEWELLERS
The Secret Store

608 Cliff Ave. Enderby
250-838-7123
www.enderbyjewellers.com



70 YEARS
SERVING ENDERBY & AREA








TONY O's

OUTFITTER

Boots • Shoes • Sandals • Workwear
Women's & Men's Safety Boot Headquarters
Jeans • Big & Tall Sizes

 /Tony-Os-Outfitter
603 Cliff Avenue, Enderby
Ph/Fax: 250.838.7949
tonyos@shaw.ca








Your Everything Store

A Super Variety Store and... A FUN Place to Shop!

COLD DRINKS • SNACKS • BEACH TOYS • FLOATIES
HELIUM BALLOONS • CRAFTS • GAMES
HARDWARE • HOUSEWARE

DOLLAR \$ DOLLAR

OPEN EVERY DAY E N D E R B Y 250-838-9644

Downtown on Cliff Avenue



Baird Ave	S5	Mill Ave	S6
Bass Ave	R3-U3	Northern Ave	P3
Belvedere St	R5-6	Northern Cres	P3
Brickyard Rd	Q2-S5	Northern St	P3
Centennial Dr	P4	Old Vernon Rd	S8
Cessna Rd	M5	Park Ave	S4
Cliff Ave	Q6-S6	Peacher Cres	P5
Cliffview Dr	P4-Q5	Pete St	S3
Cliffview Lane	Q3	Pine Court	U3
Crescent Dr	S4	Pleasant Ave	S4
Danforth Ave	R2	Polson Ave	S4
Enderby-Mabel		Preston Cres	O4
Lake Rd	C7-L5	Preston West	O4
Evergreen St	S4	Princess St	R8
Francis Dr	Q6	Purnell Dr	O3
Granville Ave	R7	Quilakwa	C8
Gunter Ellison	O4	Railway St	S7
Harvey Ave	Q4	Red Rock Cres	P5
Heitman St	T2-3	Regent Ave	R5-T5
High St	R6	Reservoir Rd	Q5
Highway 97	AC8-F1	Revel Cres	Q5
Howard Ave	S4	Ridgewood Rd	P5
Hubert Ave	R7	Riverdale Rd	U3
Johnston Ave	P5	Russell Ave	R6-S6
Kate St	T3	Salmon Arm Dr	O3-Q5
Kildonan Ave	S4-U4	Sicamous St	Q5-7
Kildonan Dr	S4	Stanley Ave	R5
King Ave	S7	Victor St	U3
Knight Ave	R5	Waterwheel St	T2
Larsen Ave	T3	West Enderby Rd	O3
Lawes Rd	Q4		
Lawes St	Q4	1st Ave Enderby	R8
Maud St	S6	2nd Ave Enderby	R8
McGowan Rd	S2-3	3rd Ave Enderby	R8
Meadow Cres	Q3		

Enderby & Area Map
on page 35

Enderby has plenty of parking with large sites perfect for any size of vehicle - and it's free!

under the stars

MUSIC & MOVIES

Dance the night away

Enjoy live music, grab the microphone and show off your karaoke skills, or participate in a jam night at one of the many entertainment establishments in and around Enderby. There is always an eclectic line-up of talent paired with delicious food at Lorenzo's Café in Ashton Creek, The Little City Merchant in downtown Enderby and the Riverfront Pub in Grindrod. Fortune's Pub at the Howard Johnson and the Bull Pen Bar and Grill are great spots to take in the sounds of local acts or to be the act at one of many karaoke nights.



For details of upcoming live entertainment please visit their websites:

www.lorenzoscfe.com

www.littlecitymerchant.com

www.riverfrontpub.ca

RIVERFRONT PUB & GRILL

Live Entertainment
Good Food
Friendly Service
Riverview Patios
Family Dining
DD Rewards
Wing Night

NOW
OPEN FOR
BREAKFAST



on the river, in Grindrod

www.RiverfrontPub.ca • 250-838-7261



Treat the whole family to the ultimate movie experience "a movie under the stars"

Starlight Drive-In

The Starlight Drive-In Theatre features North America's largest drive-in screen, this is sure to be one of the highlights of your Enderby experience! There's room for everyone, no matter what you're driving! Sitting out in front with blankets and lawn chairs is not only allowed, but encouraged. The 120 x 50 foot screen, spacious grounds with ample room for a pre-movie picnic, and the affordable concessions all combine to create a fabulous family experience you'll want to repeat.



Open May to
September

... features North America's largest drive-in screen.





Enderby has an active artistic community that includes actors, painters, crafters, writers, potters, woodworkers, sculptors & musicians.

The Enderby & District Arts Council encourages, organizes, and financially supports countless artistic projects, events, and initiatives. See local artwork on display at businesses and other establishments or take a self-guided tour of such work during the Art Walk in the summer. Visit the Enderby Arts Festival in July and experience local arts with an artisans market, entertainment stage, photo contest, demonstrations, and more. Hear fabulous music at one of the free Music by the River concerts held during the summer or experience local theatre with a production by the

Grindrod Players, Runaway Moon Theatre, or Caravan Farm Theatre.

Artisan Market July 29

*Part of the 2017
Enderby Arts Festival,
The Enderby & District
Arts Council presents a
free family-friendly
day of markets, music,
magic and art
from 9am to 4pm in
downtown Enderby.*

www.courtyardgallery.ca

#104-907 Belvedere St

Open: 10 am – 4 pm Tue.- Sat.



Courtyard Gallery

Courtyard Gallery celebrated its fourth anniversary this spring and continues to be a hub of local talent. Ongoing art displays, special shows and exhibitions, workshops and participation in local events make Courtyard Gallery a must-see on your to-do list. The gallery showcases an eclectic mix of original work by over 20 local artists. You can see paintings, photographs, sculpture, stained glass, fibre art, wood and bone carvings, woodwork, apparel and a variety of gift items.



**ENDERBY AND DISTRICT
ARTS COUNCIL**

Presenting the annual **ENDERBY ARTS FESTIVAL**
July 29 from 9am to 4pm. Free family friendly event
with artisan market, entertainment stage, Family Fun Zone,
food and much more.

Free **MUSIC BY THE RIVER** concerts during the summer
June 18, July 9, July 30, August 20 and August 27.

Supporting all the *Arts* in Enderby & District.

Box 757, Enderby, BC V0E 1V0

contact@enderbyartscouncil.ca www.enderbyartscouncil.ca



Treasures from Southeast Asia

- Jewellery • Clothing • Giftware
- Furniture • Home Decor



250-838-9765

506 Old Vernon Street
Enderby, BC

thefallingcoconut@hotmail.com



along the river

RURAL COMMUNITIES

Enderby is surrounded by Area F, which is home to many small communities situated along the Shuswap River.

Take a drive and discover that rural Enderby has many wonderful people, places and successful businesses.

Kingfisher/Mabel Lake

Scenic Kingfisher/Mabel Lake east of Enderby is where you can do nine holes at Mabel Lake Golf Course and eat yummy blueberries from Mabel Lake Farms. There are two marinas and two stores to serve permanent and seasonal residents while a quaint community hall is the venue for many events and recreational activities.

Grindrod

A jaunt through North Enderby on Enderby-Grindrod Road will take you to Grindrod. This small community situated beside the Shuswap River features the Riverfront Pub where you'll find great food, music and people, a store, a community hall and Grindrod Park, which has a walking path, bathrooms and access to the river.

Mara

Further travel along Hwy. 97A brings you to Mara where the Mara Foodliner provides gas, foodstuffs and fresh produce. This charming farming community supports several businesses, a community hall, a community park and a church. The river provides a serene environment and ample recreation possibilities, with lots of campgrounds and Mara Provincial Park.

Grandview Bench

A right turn from Grindrod off the highway brings you to breathtaking views along Grandview Bench Road. Grandview Bench residents congregate at a community hall for events and activities while the Larch Hills Ski Area provides winter and summer recreation opportunities for everyone.



Ashton Creek

Follow the Shuswap River and Mabel Lake Road east toward Enderby and find the community of Ashton Creek. A thriving farming community, it is serviced by the Ashton Creek General Store and a community hall situated on the banks of the Shuswap River. There is ample green space and a hand launch access site at the hall.



Thank you
for making us your **ONE STOP SHOP!**

9 KM EAST OF ENDERBY
Find us on the way to Mabel Lake and the golf course. We are surrounded by lakes for summer fun, plus we are right on the doorstep of winter enjoyment at Hunters Range!

ASHTON CREEK
250-838-2122 • 895 Mabel Lake Road **GENERAL STORE**

Groceries | Liquor | Hardware | Camping Equipment
Fishing Gear | Propane | Hunting & Fishing Licenses

GAS •• REGULAR •• MARKED PREMIUM •• DIESEL



Downtown Evening Market:
Thursdays 5 to 8 pm
Mainstreet - July & August

Open Air Farmers' Market:
Fridays 8:30 am to 12:30 pm
City Hall's Parking Lot, Hwy 97A
April 25th to October 10th

Kingfisher Hall Farmers' Market:
Wednesdays 11am to 1 pm
Kingfisher Hall. June 25th - September 3rd

Cliffview Farmers' Market: Fridays 10 am to 2 pm
Enderby Legion Hall, April - October

Farmers' Markets

Home grown taste

Agriculture is a big part of the Enderby area and much of the local economy is derived from its many forms. There are farmers of dairy and beef cattle, sheep, chickens, pigs, goats, bison, alpacas, llamas and emus. The weather supports a wide array of fruits and vegetables including plums, apples, strawberries, cherries, potatoes, tomatoes, corn, peas and much more.

Visit a farmers' market in Enderby, Kingfisher, or Grindrod and find local honey, eggs, produce, chocolate, meat and more. Or step into an agricultural experience at community events like the Garlic Festival in Grindrod, the Plowing Match in Spallumcheen, and the Interior Provincial Exhibition in Armstrong.



CRYSTALS • GEMS • JEWELLERY

thecrystalman.com

The
Crystal Man
Gallery

Thurs & Friday 10am-4:30pm
September to June

Thurs, Fri, Sat 10am-4:30pm
July & August

Or by appointment
250.838.7622
sales@thecrystalman.com

28 Novoting Road, Ashton Creek, Enderby

Go 10 km east of Enderby on Mabel Lake Road. At Ashton Creek General Store angle left onto Rands Rd. In less than ½ km you will see our sign.

WIDMARK FARMACY
PET FRIENDLY

BERRIES

VEGGIES

RHUBARB

CANNING

BAKING

CRAFTS

1344 Mabel Lake Rd. ☎ 250-838-7072



Tuey / Waterwheel Park

is also popular with families. This riverside park has a large, white sandy beach, shallow water with sandbars, and great views of the Enderby Cliffs.



*The beach
awaits you
at Tuey Park*

*There is
plenty of
free parking.*



Belvidere Park

is a great place to enjoy the natural beauty of Enderby, eat a picnic lunch, and walk along the river. A viewing platform lets you watch for birds and other wildlife. Located in the heart of downtown, the park acts as a venue for free concerts and community events. Public washrooms are located in the Visitor Centre at the park.



Barnes Park

is ideal for families. Large areas of flat grass are perfect for a game of soccer or Frisbee while the outdoor heated pool, playground, skateboard park, and basketball court give the kids lots to do. There is also a covered picnic area and a gazebo with interesting local artifacts from the Enderby Museum.



Riverside Park

provides ball diamonds, a large gazebo, washrooms, and playground plus easy access to a boat launch, swimming and the Riverwalk. The adjacent Riverside RV Park offers treed sites, showers, summer kitchen, barbecue pit and washrooms.



Mara Provincial Park

has activities for the whole family. Located on Mara Lake, the park has a boat launch, large swimming area, washrooms, and plenty of space for picnics.



Grindrod Park

is located along a slow-moving section of the Shuswap River, making it perfect for swimming. A new community hall, picnic table, a playground, walking perimeter trail and ball diamonds add to the park's appeal for families and special events. A path under the bridge gives easy access to Grindrod amenities.



ARMSTRONG & ENDERBY MASSAGE THERAPY CLINIC

2 LOCATIONS • OPEN MONDAY TO FRIDAY

Enderby
511 Mill Ave. 250-838-7050

Armstrong
2510 Patterson Ave. 250-546-1927

Kent Clark R.M.T. – Dennis Desrochers R.M.T.



GATEWAY Living Fitness



paddle boarding
rentals
lessons
classes

803 VERNON ST, ENDERBY, BC

250 838 9449

gatewaylivingfitness@gmail.com



'Tuber'
supplies



Personal Training
Spin, Stretching &
Group Fitness Classes
... ask for schedule!

fitness -- paddle boarding -- retail



endless rewards

TRAILS & TREKS



*Find your
trail at*

WWW.SHUSWAPTRAILS.COM

Pedal Treks

Mountain bikers will delight in the many trails at Mabel Lake and Larch Hills, complete with scenic views and large forested areas to explore. For the road warriors, the Back Enderby tour offers a relatively flat terrain with spectacular views along a stretch of road that can be finished in 1-2 hrs.

Mapped Bike Routes:

www.shuswaptourism.ca/do/outdoor-adventure/biking-listings

Scenic vistas,
endless discovery,
fresh air, mind,
body & soul
rejuvenation...

Heritage Riverwalk

The Jim Watt Heritage Riverwalk follows the Shuswap River through the heart of Enderby. Take this easy walk by the water and read the signs with local history, sit at one of the many benches to see different songbirds and wildlife, or enjoy lunch at a picnic table on the riverbank.

Other Notable Treks

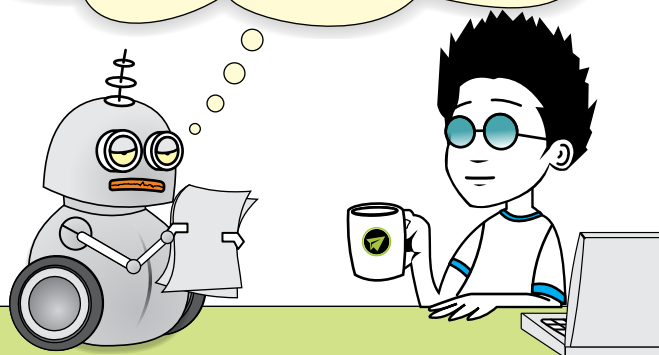
Lush landscapes, remarkable views, and wildlife sightings are the norm while hiking the many trails at Hunters Range, Larch Hills, Mabel Lake, Gardom Lake, Hidden Lake, Kingfisher Trails or Mt. Mara Lookout.

TRANSITION MARKETING SERVICES

Printing • Design • Digital Media



Yes... apparently Transition Marketing is both
creative and cost effective!



611 Russell Ave. Enderby, B.C.

www.transitionmarketing.ca Tel: 250-838-0510



Enderby Dental Centre

Dr. Natasha Garnett, DDS

We Welcome New Patients

Extractions • Root Canals • Crowns • Bridges
Family Dentistry • Dentures • Teeth Whitening
Dental Emergencies • Restorative Dentistry

510 George St. Enderby, BC

Ph: 250-838-6406

Mon. to Thur. 8am to 5pm
Fridays upon request

Serving the North Okanagan for 30+ years

trekk the trails
ENDERBY CLIFFS

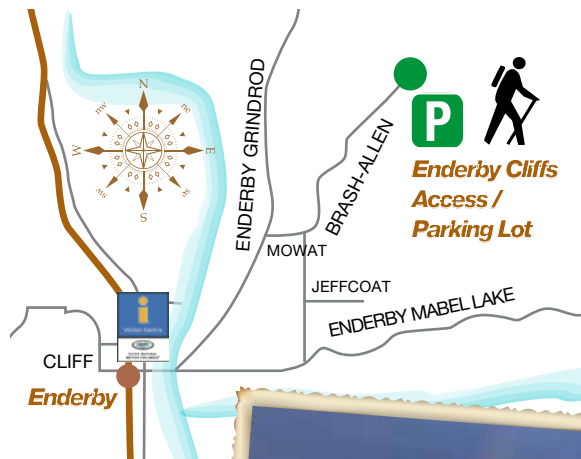


Enderby Cliffs

The iconic Enderby Cliffs not only signify that you are, in fact, in Enderby, they also offer breathtaking panoramic rewards to those who trek to the top of them. Now a Class A provincial park covering 2,246 hectares, the Cliffs boast a hiking-only trail, leading hikers through lush wilderness, volcanic rock and fossil sites. Once on top, watch for soaring birds playing on the updrafts created by the steep rock face! *Don't forget to bring good footwear and plenty of water.*

Hike the cliffs.

- Access:** Parking and trail access at the end of Brash-Allen Rd.
Open: April - October
Time: 1.5 - 3 hrs up and 1.5 - 3 hrs down
Difficulty: Strenuous with steep sections



Great Motor Touring

Explore the beautiful area around Enderby with a car or motorcycle tour including the Shuswap River Route, Road to Mabel Lake, Mount Ida Circuit or Circle the Shuswap. Pick up a Shuswap Motor Touring Guide for maps. www.shuswaptourism.ca



Come share our passion for horses!



TRAIL RIDES

We offer guided trail rides (1hr) in the foothills of the Enderby Cliffs.
 Minimum age is 10 yrs old.
 Pony rides also available for children under 10



Okanagan Horseback

BY APPOINTMENT ONLY • OPEN MAY-OCT
 RESERVATIONS REQUIRED. CASH ONLY
 Call 778-212-6555 | Enderby, BC
www.okanaganhorseback.com

**NEW
 BUILT HOMES
 FOR SALE**

This could be your view...

OXBOW RIDGE
 2.5 to 3 acre VIEW lots

Lot Prices
 starting at
 \$139,000

Stephanie Neely
 250.938.4086

ROYAL LEPAGE
 Downtown Realty Ltd.

OkanaganWelcomeHome.com

For more information please visit

www.exploringenderby.com

or call 250-838-6727

P/13
Rosemond Lake
Mara Lake

Top 3 Tubing Routes

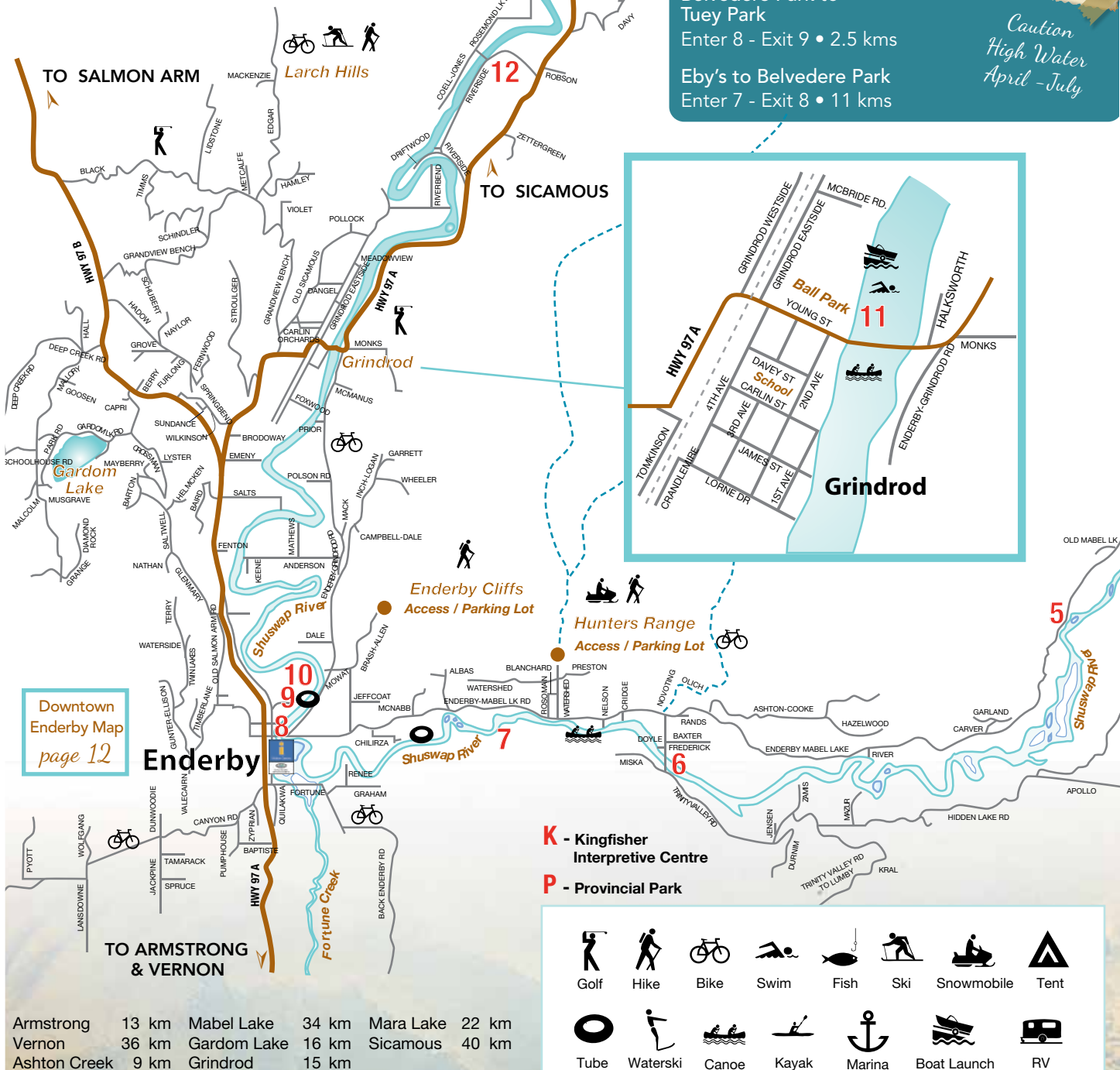
Trinity Bridge to
Eby Hand Launch
Enter 6 - Exit 7 • 2.5 kms

Belvedere Park to
Tuey Park
Enter 8 - Exit 9 • 2.5 kms

Eby's to Belvedere Park
Enter 7 - Exit 8 • 11 kms



Caution
High Water
April - July





Tubing Times

	Float Time (Hrs) Spring / Early Summer	Float Time (Hrs) Mid-Summer	Float Time (Hrs) Late Summer / Fall	Kms From Belv. Park	River Distance (Kms)	Swimming	Picnic Area	Camping	Trails
Brandt's Hand Launch* (3)	2	2-3	29	4.5	•	•	•	•	•
Cooke Creek Rec. Site (4)	2-3	3-4	25	4.5	•	•	•	•	•
Dale's Hand Launch (5)	5-6	6-7	7-8	19	11	•	•	•	•
Trinity Bridge (6)	5-1	1	1	11	2.5	•	•	•	•
Eby Hand Launch (7)	3-3.5	4-5	5-6	6	11	•	•	•	•
Belvidere Park (8)	.5	.75	0	1	•	•	•	•	•
Belvidere Park (8)	5-.75	1-1.5	1.5	0	2.5	•	•	•	•
Tuey Park/Waterwheel (10)	8	10	12	1	13	•	•	•	•
Grindrod Bridge (11)	8	10	12	10	11	•	•	•	•
Mara Bridge (12)	7	9	11	17	7	•	•	•	•

** Bracketed numbers (8) indicate launch area on main map. Look for bold number in red. 8

* WARNING: watch for rock shelves. Watch for sweepers, stay left of Interpretive Centre.



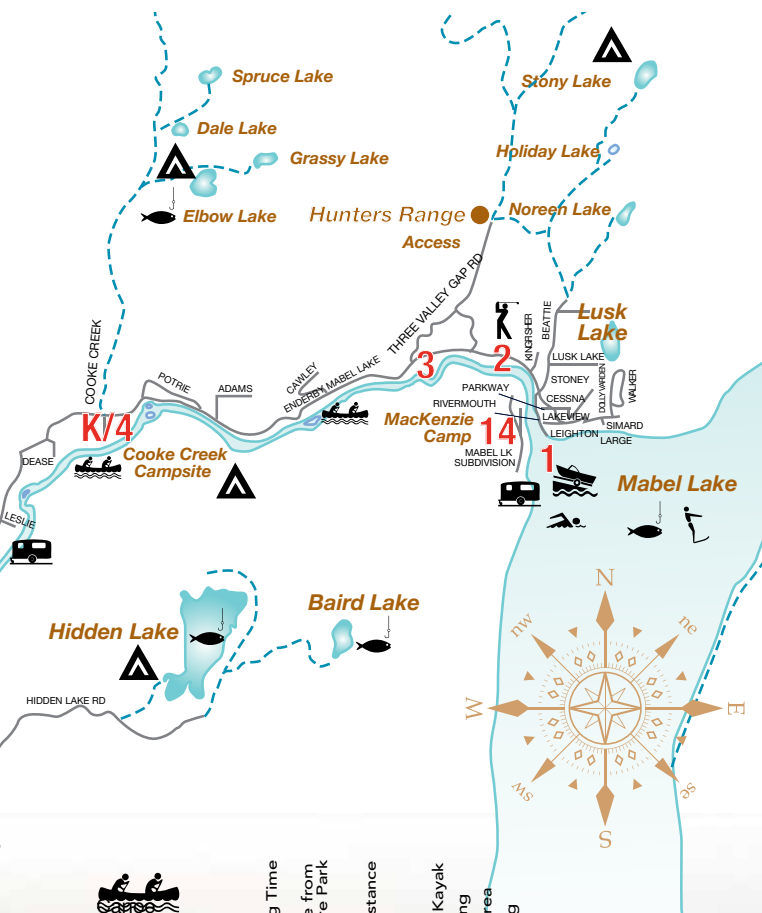
The Right Agents for Today's Market.®

The **view** you want.
The **agent** you need.

RE/MAX® Enderby

www.TheRightAgents.com

908 George Street • 250-838-0025 • 1-888-609-7764



Paddling Times

	Paddling Time (Hours)	Distance from Belvidere Park (Kms)	River Distance (Kms)	Canoe	Touring Kayak	Swimming	Picnic Area	Camping
Kingfisher Rock (2 on map)	2	33	2.5	•	•	•	•	•
Brandt's Hand Launch (3)	1	29	4.5	•	•	•	•	•
Cooke Creek Rec. Site (4)	1.5	25	4.5	•	•	•	•	•
Dale's Hand Launch (5)	5+	19	11	•	•	•	•	•
Trinity Bridge (6)	1	11	2.5	•	•	•	•	•
Eby Hand Launch (7)	4	6	11	•	•	•	•	•
Belvidere Park (8)	.5	0	1	•	•	•	•	•
Belvidere Park (8)	1	0	2.5	•	•	•	•	•
Tuey Park/Waterwheel (10)	5	1	13	•	•	•	•	•
Grindrod Bridge (11)	4	10	11	•	•	•	•	•
Mara Bridge (12)	3	24	7	•	•	•	•	•

* Cross-wind in the afternoon may cause an increase in paddling time.

Adams Rd	K5	Lake Rd		Leslie Rd	J6	Rivermouth Rd	M5
Albas Rd	E7		C7-L5	Lidstone Rd	C3	Riverside Rd	E2
Anderson Rd	C6	Fenton Rd	C6	Lorne Dr	C4	Robson Rd	E2
Apollo Rd	I8	Fernwood Rd	C4	Lusk Lake Rd	M5	Rohan-Peters Rd	L5
Ashton-Cooke Rd		Frederick Rd	F7	Lyster Rd	C5	Rosemond Lake Rd	E2
G7		Fortune Rd	D7	Mabel Lake			
Back Enderby Rd	D8	Foxwood Rd	D4	Subdivision Rd	M5	Rosoman Rd	E7
Baptiste Rd	C8	Furlong Rd	C4	Mack Rd	D6	Salts Rd	C5
Barton Rd	B5	Gardom Lake Rd	B5	MacKenzie Road	C2	Saltwell Rd	B6
Baxter Rd	F7	Garland Rd	I7	Malcolm Rd	A5	Schindler Rd	C3
Beattie Rd	M5	Garrett Rd	D5	Mallory Rd	B4-6	Schoolhouse Rd	A5
Berry Rd	B4	Glenmary Rd	C6	Mathews Rd	C6	Simard Rd	M5
Black Rd	B3	Goosen Rd	B4	Mayberry Rd	B5	Springbend Rd	C5
Blanchard Rd	E7	Graham Rd	D7	Mazur Rd	H8	Spruce Rd	C8
Brash-Allen Rd	D6	Grandview Bench		McBride Rd	D4	Stoney Rd	M5
Brodway Rd	C5	Rd		McManus Rd	D5	Strouler Rd	C4
Campbell-Dale Rd		B4		McNabb Rd	D7	Sundance Rd	C5
D6		Grange Rd	B6	Meadowview Rd	D3	Tamarack Rd	C8
Canyon Rd	B8-C8	Grindrod Eastside		Metcalf Rd	C3	Terry Rd	B7
Capri Rd	B4	C4		Miska Rd	F7	Three Valley Gap	
Carlin St	C4	Grindrod Westside		Monks Rd	C4	Rd	
Carlin-Orchards Rd		C4		Mowat Rd	D7		L5
C4		Grove Rd	B4	Musgrave Rd	B5	Timberlane Rd	B7
Carver Rd	H7	Gunter-Ellison Rd	B7	Nathan Rd	B6	Timms Rd	B3
Cawley Rd	K5	Hadow Rd	B4	Naylor Rd	B4	Tomkinson Rd	C4
Chiliza	D7	Halksworth Rd	C4	Nelson Rd	F7	Trinity Valley Rd	
Coell-Jones Rd	E2	Hall Rd	B4	Novoting Rd	F7		F7-G8
Cooke Creek Rd	J5	Hamilton Rd	E2	Old Mabel Lake Rd		Twin Lakes Rd	B7
Crandmire Rd	C4	Hamley Rd	C3	I6		Valecain Rd	B7
Cridge Rd	E7	Hazelwood Rd	H7	Old Salmon Arm Rd		Violet Rd	C3
Crossman Rd	B5	Helmcken Rd	B5	B7		Walker Rd	M5
Dale Rd	D7	Hidden Lake Rd		Old Sciamous Rd	C4	Watershed Rd	E7
Dangel Rd	D4	H8-K7		Olich Rd	F6	Waterside Rd	C6
Davey St	C4	Highway 97 AC8-F1		Park Rd	A5	West Poirier Rd	F2
Davy Rd	E2	Highway 97 BA2-C5		Parkway Rd	M5	Wheeler Rd	D5
Dease Rd	J5	Hutchison Rd	F2	Parsons Rd	E1	Wilkinson Rd	C5
Deep Creek Rd	A4-8	Inch-Logan Rd	D5	Poirier Rd (East & West)		Wolfgang Rd	B8
Diamond Rock Rd		Jackpine Rd	C8			Young St	C4
B6		James St	C4	E1		Zamis Rd	G8
Dolly Varden Rd	M5	Jeffcoat Rd	D7	Pollock Rd	D3	Zettergreen Rd	E3
Doyle Rd	F7	Jensen Rd	G8	Polson Rd	D5	Zyprian Rd	C8
Driftwood Rd	E3	Johnson Rd	F2	Potrie Rd	J5		
Dunwoodie Rd.	C8	Keene Rd	C6	Pumphouse Rd	C8	1st Ave Grindrod	C4
Durnim Rd	G8	Kingfisher Rd	M5	Preston Rd	E7	2nd Ave Grindrod	C4
East Poirier Rd	F2	Kitsch Rd	F2	Prior Rd	D5	C4	
Edgar Rd	C3	Kral Rd	H8	Pyott Rd	A8	3rd Ave Grindrod	C4
Emery Rd	C5	Lakeview Rd	M6	Rands Rd	F7	C4	
Enderby-Grindrod		Lansdowne Rd	B8	Renee	D8	4th Ave Grindrod	C4
C5-7		Large Rd	M5	River Rd	H7	C4	
Enderby-Mabel		Leighton Rd	M5	Riverbend Rd	D3		

K

L

M

ENDERBY & AREA MAP

35

world of salmon

OUTDOOR DISCOVERY



The Kingfisher Interpretive Centre,

located 25 kms east of Enderby, is a great place to explore riverside trails and learn about salmon, fishing, the river, and local biodiversity.

The award-winning facility is nestled amongst 10 acres of cedar-hemlock rainforest situated along the banks of the Shuswap River. It is a community-run salmon hatchery and a 'living classroom.' Hundreds of school children and others visit the centre each year to learn about the importance of salmon, watershed protection and restoration, take part in activities and events, release salmon fry into the river, and explore the forest on marked trails. You can take a tour of the hatchery to learn how things work and go inside a traditional

First Nations' dwelling called a kekuli.

The centre also hosts an egg take public event each Thanksgiving weekend to collect salmon eggs and milt to produce some of next year's baby salmon.



Annual Egg Take

October 7th and 8th 10am to 3pm

Hands-on lesson in maintaining chinook salmon stock.

On the river 500m past the Interpretive Centre.

Free family fun!!



"Outdoor discovery that fosters a sense of stewardship towards our environment"

**Nature Trails • Authentic Kekuli Hut
Large Gazebo • River Access • Swimming**

*Yours to explore all year with interpreters
onsite during the summer*

Annual Egg Take October 7 & 8 | 10am to 3pm

*Hands-on lesson in maintaining chinook salmon stock.
On the river 500m past the Interpretive Centre.*

2550 Mabel Lake Road, Enderby • www.kingfishercentre.com



Free Event

Learn to Fish Day - July 23

Free Event

Annual Egg Take - Oct 7 & 8

**Hillstreet Repairs Gas Fired Fridges
for RV, Cabins & Home**

**7 YEAR
WARRANTY**



608 Railway Street, Enderby

250-838-9540

www.hillstreetpropanerv.com



adventure & exploration SHUSWAP RIVER

Natural Beauty

One of the more distinct features of Enderby & District is the beloved Shuswap River, flowing west from Mabel Lake to Mara Lake. In the early days, the river was a primary source for the transportation of goods. The infamous river drives occurred on the Shuswap River from the late 1800s to 1967. Logs were run down the river from Sugar Lake to the sawmill and pole yards in Enderby.

Today, the river is a recreational paradise for those seeking pristine nature or amazing adventure. Canoeing, kayaking, tubing, rafting, fishing and swimming opportunities can all be found in abundance along the Shuswap River. For nature lovers, this area is home to countless bird species including blue herons, eagles, hawks, cranes and more! Keep those eyes open and cameras ready because you never know when an opportunity to see wildlife will present itself!

Pack Out What You Pack In

The Shuswap River is of tremendous ecological and cultural importance to the area and its waters act as the lifeline for our salmon who continue to return to the Shuswap from July to October. Treating the river with the respect it deserves is of the utmost importance to our community and we ask that anybody enjoying the river adopts this philosophy. Please pack out what you pack in!



Tubing

Tubing is popular, with a variety of times and floating experiences available depending on the time of year, type of watercraft used, and location of the trip. Life jackets are required.

River Ambassadors

River Ambassadors are present during the summer months to provide information on interacting with the river in a safe and responsible manner. This innovative program encourages river safety and environmental stewardship to river users. They offer a wealth of information for those seeking it while enjoying the recreational bounty the river has to offer.

D&L Painting

NEW CONSTRUCTION • RE-PAINTS

DAVID & LISA LANCASTER

We paint with passion

250-833-7731 • black14@telus.net



Park View UPHOLSTERY

& CUSTOM SEWING

908 Maud Street, Enderby BC

Boat Seats & Covers | Bimini Tops
Automotive & Aircraft Interiors
Skidoo & ATV Seats

*We carry a great selection
of Awning Fabrics!*

250-838-2230 • www.parkviewupholstery.com • parkvuph2@msn.com



refreshing fun — PRISTINE LAKES

Numerous smaller lakes in the area provide ample recreation opportunities.

For a quiet day of bird watching, fishing or swimming, make a trip to Gardom Lake. The lake has a motor limit to ensure quietude. It is also home to a large population of painted turtles. A regional park, a boat launch, two year-round camps, and rental cabins are all available.

Scenic Hidden Lake is perfect for a camping weekend of swimming, hiking, fishing and canoeing with the family.

Pitch a tent and enjoy a quiet fishing weekend with a small boat or canoe at the remote Baird Lake located past Hidden Lake or at Noreen, Holiday or Stony Lake, a trio of marshy lakes in the hills above the northwest corner of Mabel Lake. Good fishing and bird watching are available at Elbow, Grassy, Dale and Spruce Lakes but the May 2014 washout of Dale Lake has eliminated access from Cooke Creek Road. Current access via Kingfisher-Three Valley Gap Road requires some local knowledge and good tires. Kidney Lake off Kingfisher-Three Valley Gap Road is still a great fishing hole, as is Rosemond Lake, which is only accessible by canoe or rowboat at the south end of Mara Lake.

Mara Lake

Azure water and white sandy beaches surround this beautiful lake. The shores of Mara Lake feature a provincial park, boat launch, private campgrounds and resort developments. The area is ideal for summer recreation including waterskiing, boating, camping and swimming. The rural community of Mara has many amenities including a store, hall, park and b&b's.

Mabel Lake

A vista of deep blue water surrounded by green mountains greets visitors to Mabel Lake. Enjoy swimming, boating, waterskiing, canoeing, kayaking, hiking and fishing at this lake east of Enderby that stretches 26 km in length and 2 km in width. Lakeside amenities include public beach areas, a golf course and resort, two boat launches, a children's camp, a store, an established marina plus a brand new marina. Campers can also enjoy the lake with a visit to Cottonwood Beach or Noisy Creek campgrounds.



(250) 838-6402
308 Old Salmon Arm Rd.
Enderby, B.C.

24 HOUR TOWING




Professional Auto Repair & Towing Service
BRAKES • MUFFLERS • SHOCKS • REPAIRS • TUNE-UPS • TOWING

Let the Tax Man pay your Health & Dental!



Call: 250-838-6848 • Toll Free 1-866-566-6848 • 907 Belvedere St, Enderby
www.healthanddental.ca



Lake & Recreation Sites

	Boat Launch	Small Boats	Motor Boats	Horsepower Limit	Fires Allowed*	Manager On Site	Paid Camping	RV Sites	Tenting	Sani-Station	Playground	Swimming	Trails	Bathrooms	Pets Allowed**	Fishing	Fishing Restrictions***
Mabel Lake	•	•	•	•	•	•	•	•	•	•	•	•	•	•	•	•	•
Gardom Lake	•	•	•	•	•	•	•	•	•	•	•	•	•	•	•	•	•
Hidden Lake	•	•	•	•	•	•	•	•	•	•	•	•	•	•	•	•	•
Baird Lake	•	•	•	•	•	•	•	•	•	•	•	•	•	•	•	•	•
Mara Lake	•	•	•	•	•	•	•	•	•	•	•	•	•	•	•	•	•
Rosemond Lake	•	•	•	•	•	•	•	•	•	•	•	•	•	•	•	•	•
Elbow, Grassy & Dale	•	•	•	•	•	•	•	•	•	•	•	•	•	•	•	•	•
Kidney Lake	•	•	•	•	•	•	•	•	•	•	•	•	•	•	•	•	•
Noreen, Holiday & Stony	•	•	•	•	•	•	•	•	•	•	•	•	•	•	•	•	•
Noisy Creek	•	•	•	•	•	•	•	•	•	•	•	•	•	•	•	•	•
Cooke Creek	•	•	•	•	•	•	•	•	•	•	•	•	•	•	•	•	•
Cottonwood Beach	•	•	•	•	•	•	•	•	•	•	•	•	•	•	•	•	•

* Please check www.bcwildfire.ca for regional fire bans and restrictions

** Please leash and clean up after your pets

Fishing is year round in Enderby!

Spring, chinook, kokanee and sockeye salmon swim from late summer to early fall as they make their way back to their spawning grounds on the Shuswap River east of Enderby. Cooke Creek campground on Mabel Lake Road is the ideal casting spot during salmon season. Fishing for rainbow trout and whitefish is done year round in the river and throughout many of the surrounding lakes. Gardom Lake and Hidden Lake are both fantastic spots for ice fishing in the winter. Fishing licenses are required and can be purchased at several convenient locations in the area. Check the fishing guide for freshwater regulations prior to tossing in your line.



Fishing Licenses are available at

**Ashton Creek
General Store**
895 Mabel Lake Rd

Grant's Tackle Box
1304 George St. Hwy97A

Parkridge **IDA** PHARMACY

Health & Wellness • Home Healthcare • Cosmetics
Greeting Cards • Batteries • Gifts • Lottery

M - F 9am to 5:30pm & Sat. 9am to 5pm
250-838-5866 or TF 1-866-675-5866

#3, 802 George St (Hwy 97A) Enderby
(Vetter Plaza, next to the walk in Medical Clinic)



"WE TAKE THE TIME"



Best Service! Best Price! Biggest Smiles!

GRANT'S TACKLE BOX

All your fishing and boating needs in one spot!



Pontoon Boats



Aluminum Boats

POLAR KRAFT
Since 1951



1304 George Street (Hwy 97A) Enderby, BC

Tel: 250-838-6508 or TF: 1-866-838-6508

at its best NATURE



KEVIN HOWEY



You'll find a diverse range of natural habitats in Enderby, making it home to many animal and plant species. As a travel corridor for wildlife, you are sure to sight wildlife in the North Okanagan including several sensitive grassland and wetland species, some not found elsewhere in Canada. Keep your eyes open for mule and white-tail deer, beavers, otters, marmots and bears. You may even spot a coyote, moose or cougar. You will delight in the sheer array of songbirds found along waterways, in the subalpine meadows and forests. Look for osprey along hydro lines and eagle nests in trees along the river. You can spot the colours of cow vetch, goatsbeard, common chicory, foxglove, ox-eye daisy, clover, wild strawberry and heather and enjoy the palette of greens in the forest of cedar, pine, spruce, birch, aspen, cottonwood and more.

Bird Species

Bird watchers will find a wide variety of birds including blue herons, eagles, hawks, cranes, swans, chickadees, grosbeaks, goldfinches, pine siskens, Stellar's jays, nuthatches, belted kingfishers, piliated woodpeckers, mergansers, coost, ravens, crows, juncos, magpies, owls, sparrows, Canada geese, hummingbirds, pheasants, quails, turkey vultures, kestrels, flickers and more.



250-838-BOOK (2665)



Riverside Ball Diamonds & Lions Gazebo



The following facilities and parks are available for rent in Enderby and area:

Riverside Ball Diamonds • Lions Outdoor Pool • Lions Gazebo • Arena

CENTRAL HARDWARE LTD.



For all your building needs



701 Bass Ave. • Enderby
250-838-6474

4211 25 Ave. • Vernon
250-545-2333

Also Serving Salmon Arm &
The North Okanagan
250-832-6011

www.centralhardwareltd.ca



Welcoming Winters

When the snow falls and the ice forms, we grab our preferred winter gear and enjoy every second of it! Cross-country skiing and snowshoeing are popular activities along our many area trails. There are over 50 kilometres of track-set trails and over 100 kilometres of adjacent non-track-set trails at Larch Hills northwest of Enderby. Explore the snow-covered beauty of rural Enderby in snowshoes at the Kingfisher Interpretive Centre or by snowmobile with a rental from Backus Back Country Adventure.

Grab your thermos and your buddies and head up to Gardom Lake or Hidden Lake for a truly authentic winter experience... ice fishing. Lace up your skates and enjoy a family skate at the Enderby Arena or at the outdoor rink at Putula Park in Mara. Participate in or watch curling at the local curling club or follow minor hockey action from the lounge overlooking the arena next door. Go downhill skiing or snowboarding at one of the incredible ski hills located near Enderby.

the snow awaits WINTER PLAYGROUND



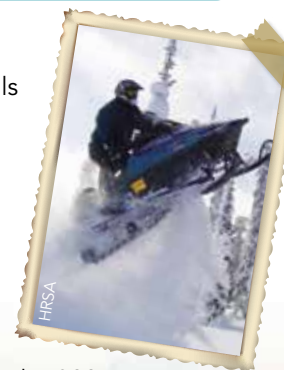
Hunters Range

For the very best in mountain recreation, look no further than the many trails meandering through Hunters Range. Explore alpine meadows and enjoy magnificent vistas in this mountain paradise covering approximately 200 square kilometres. Hiking, biking, quad riding, horseback riding and snowmobiling can all be found in abundance in Hunters Range.

www.huntersrange.com

Snowmobiling

Carve it up this winter on the rolling hills of Hunters Range where snowmobilers of all abilities will find spectacular riding terrain. Go steep and deep on challenging hills and bowls, while enjoying some of the driest powder you can find! The Hunters Range Snowmobile Association maintains over 90 kilometres of groomed trails and several chalets where sledders can warm up for the next run. The 300 member group hosts several events throughout the season including the Bingo Rally in January and a ladies' ride in March. The group monitors access points to Hunters Range and charges a fee to non-members.



YOUR LOCALLY OWNED AND OPERATED PARTS STORE

ENDERBY ARMSTRONG

VERNON LUMBY

**GILBERT
PARTS DEPOT**

Farm & Fleet Filters • Welding Supplies
Trailer Suspension Parts • Industrial Parts
Body Parts for Cars & Trucks

513 Hubert Ave, Enderby | 250-838-7291



Crystal Water Express

Water Centre Open 24/7



KAL TIRE

True Service.

*"Serving the area for
over 40 years"*



Tires • Wheel Alignments
Lifetime Mufflers • Brakes
• Transmission &
Radiator Flushing •

**TONY'S TIRE
SERVICE LTD.**

606 Old Vernon St.
Enderby | 250-838-7226

golfer's paradise TEES & GREENS

A Golfer's Paradise

Beginners and aspiring pros alike will find an unforgettable golf experience at one of the many courses located in the area. From short afternoon rounds to weekend golf experiences, there is a course here perfectly suited to your game. Get in some short game practice in a country atmosphere on an easy walking course or challenge your nine-hole skills with sand traps, rock walls and water hazards at one of the tougher area courses. Take in a championship round with your friends on any of the area's 18-hole courses featuring unique layouts and exciting hazards. Great golf amenities, convenient locations, picturesque settings, and top-notch staff make the Enderby area a golfer's paradise.



Golf Courses

	Holes	Par	Yards	Proshop	Putting Green	Chipping Green	Driving Range	Club Rentals	Cart Rentals	Clubhouse
Mabel Lake Golf & Country Club	9	36	3103	•	•	•	•	•	•	•
Birchdale Golf Course	9	28	1395	•	•	•	•	•	•	•
Shuswap Lake Estates Golf	18	71	6467	•	•	•	•	•	•	•
Predator Ridge Golf Resort	18	71	3578	•	•	•	•	•	•	•
Royal York Golf Course	9	35	3200	•	•	•	•	•	•	•
Salmon Arm Golf Club	18	72	7038	•	•	•	•	•	•	•
Club Shuswap Golf & RV	18	59		•	•	•	•	•	•	•
Sonseeker's Ridge	9	35	2700	•	•	•	•	•	•	•
Spallumcheen Golf & Country Club Exec	9	35	2626	•	•	•	•	•	•	•
Spallumcheen Golf & Country Club	18	72	6423	•	•	•	•	•	•	•
Vernon Golf & Country Club	18	72	6597	•	•	•	•	•	•	•
Canoe Creek Golf Course	18	72	7026	•	•	•	•	•	•	•



Steve Campbell
250-550-4321
realtor.s.campbell@gmail.com



Christiana Pfeifer
250-306-5351
christiana@realty-bc.com



Tyler Rands
250-550-4134
tyler.rands@century21.ca



Debbie Pickering
250-503-8789
debbie.pickering21@gmail.com



John Stoyles
250-306-0758
john.stoyles@century21.ca



Marilyn Wallis
250-549-6570
marilyn.wallis@century21.ca



Executives Realty Ltd.

250-838-6699 • 1-877-838-6699
300 George Street • PO Box 169
Enderby, B.C. V0E 1V0



A PORTION OF EVERY
TRANSACTION SUPPORTS
EASTER SEALS KIDS TO CAMP



CLIENT COURTESY
MOVING VAN



www.enderbycentury21.ca



Autowear

accessories

• AUTO REPAIRS • CUSTOMIZING •

802 Old Vernon Rd.
Enderby, B.C.

Brock Matejka
250.838.9400

SPECIAL EVENTS

Looking for a rental?



A Great Location for Any Event

The Enderby area is an ideal location for your special event. You can find the right services, setting and people to pull off the perfect wedding, family reunion or other special event. Enderby played host to thousands of Girl Guides for SOAR 2014, movie production companies for Tomorrowland and Go with Me, and lots of happy marriages at the Lions Gazebo. The Howard Johnson has a great banquet hall for a catered occasion while local community halls are ideal for a potluck event.

Whether it is a small intimate locale, a meeting room or an outdoor backdrop – Enderby can deliver. And there is always something going on in and around Enderby to add to your event and pump up the fun. You will find the people and businesses accommodating and the location second to none.

Enderby Drill Hall

Includes stage & kitchen
Seats 210 ~ Contact
250-838-7170 to book

Enderby Arena

Seats approx. 900 ~ Rink, dry floor or lounge rental ~
Contact 250-838-2665 or
recreation@cityofenderby.com

Enderby Lions Gazebo

120x50' outdoor venue with closed-in kitchen & washrooms
Contact 250-838-2665 or
recreation@cityofenderby.com

Enderby Lions Pool

Outdoor pool in Barnes Park
Contact 250-838-2665 or
recreation@cityofenderby.com

Riverside Community Club - Ashton Creek

250-838-6338
www.riversidehall.ca

Riverside Park Ball Diamonds

Four regulation size ball fields
Contact 250-838-2665 or
recreation@cityofenderby.com

Belvidere Park

Park beside the Shuswap River in the heart of town
Contact 250-838-2665 or
recreation@cityofenderby.com to book

Grandview Bench Hall

Kitchen, tables & chairs
Seats 75 ~ \$120/day or \$60/half day
607 Grandview Bench Rd.
Call Karin at 250-832-4015 or
Ellie at 250-832-5148
epalme46@gmail.com

Grindrod Recreation Hall

6920 Hwy 97A Grindrod
Seats up to 100, kitchen, washrooms, parking
Call Lindsey 250-838-6096

Mabel Lake Farms

seats up to 150 & catering available on site,
contact 250-838-6248

Splatsin

Community Centre
250-838-6496
www.splatsincentre.ca

ENDERBY RENTALS

EQUIPMENT RENTAL

We specialize in small engine repair!

www.enderbyrentals.ca

STIHL

BEAR CAT

TORO



Concrete Tools - Pumps & Gensets
Lawn Garden / Landscape Tools
Boom Lifts / Scissor Lifts
Ladders & Scaffolding

601 Hubert Avenue, Enderby | 250-838-7328

*Fresh Baking • Coffee Bar • Ice Cream
Open July & August 8am to 5pm*

Okanagan's Finest Blueberries
So much to offer!

B&B • Wedding Venue
Camping and more!

MABEL LAKE
FARMS
250-838-6248

www.MabelLakeFarms.com • 33 Kingfisher Rd. Enderby, BC

north okanagan WINE TOUR



SUNNYBRAE WINERY

Gorgeous surroundings,

excellent climate and good growing conditions make the North Okanagan an ideal place for vineyards and wineries. Take a wine tour and visit the many wineries in the region.



Waterside Winery

70 Waterside Rd
Enderby 250-838-9757
April-November
10am-5pm
www.watersidewinery.com

Larch Hills Winery

110 Timms Rd
Salmon Arm
250-832-0155
March-December
9am-5pm

Baccata Ridge Winery

184 Monk Rd
Grindrod 250-838-2157
call for hours
www.baccataridgewinery.ca

Recline Ridge Vineyard & Winery

2640 Skimikin Rd
Tappen 250-835-2212
Open Year Round -
Call for hours
www.reclineridgewinery.com

Lavina Estate Winery

5214 Clcahl Road
Armstrong
250-899-3233
www.lavinaestatewinery.com

Sunnybrae Winery

3849 Sunnybrae Canoe
Point Rd
Tappen 250-835-8373
May-October
10:30am-5:30pm
www.sunnybraewinery.com

Edge of the Earth Vineyards

4758 Gulch Rd
Armstrong 250-546-2164
March-October
10am-5pm
www.edgeearth.ca



HOME

BUSINESS

FARM

RV

BOAT

WE'RE HERE WHEN YOU NEED US!

Open M-F 8:30am - 5pm • Sat. 9am - 5pm



autoplan



driver
licensing



Your Best Insurance
is an Insurance Broker



Johnston Meier
Insurance Agencies Group

801 George Street, Hwy 97A, Enderby, BC | enderby@jmins.com

Tel: 250-838-7333 • TF: 1 (888) 838-7302
JMINS.COM

WorkBC Employment
Services Centre

TAP INTO THE LOCAL JOB MARKET



TALK TO THE
EXPERTS

2 - 904 MAUD STREET, ENDERBY BC
T: 250.838.2324

Canada



BRITISH
COLUMBIA

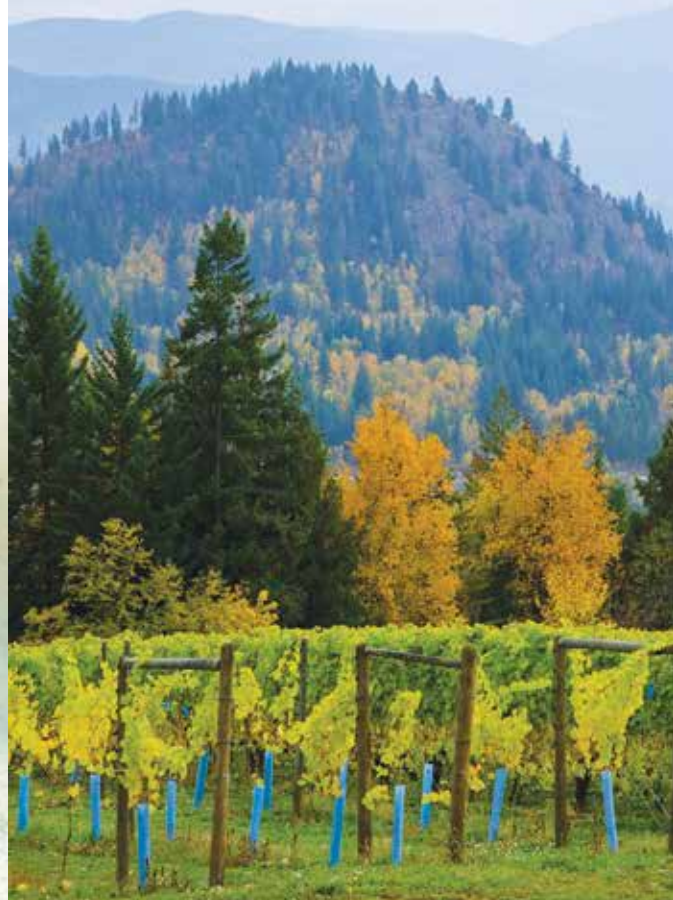


nexusBC
Community Resource Centre

The Employment Program of British Columbia is funded by the Government of Canada and the Province of British Columbia.



*The climate of the North
Okanagan/Shuswap region
supports a number of wineries.*



Waterside Winery

Waterside Winery just north of Enderby is a young vineyard opened by Branko and Debbie Juric in the fall of 2014. Since 2009, the couple has cultivated six varieties of grapes on their rural property including the winter-hardy Ortega and Siegerrebe. These aromatic and flavourful grapes provide good yields while being disease resistant. They have developed a nice selection of wines that include Marechal Foch, Okanagan Sweet Cru and Rosé, which they invite you to sample in their bright tasting room.

Sunnybrae Winery

The aptly-named Sunnybrae Winery nestled below Bastion Mountain in Tappen boasts its own micro-climate perfect for grape growing. Five varieties of cool-climate grapes grown since 2005 at the south-sloping volcanic ash vineyard enjoy warm summer days and cool evening breezes. The result is a fine selection of white, red and rosé wines produced on site using 100 per cent B.C.-grown grapes. Barry and Nancy Turner invite people to their craftsman-style winery to enjoy the fabulous views and sample some product in the tasting room.

wine & beer
making supplies

wine made
on premises

personal  finewines

1007 Belvedere St. Enderby • 250-838-9985

www.PersonalFineWines.com

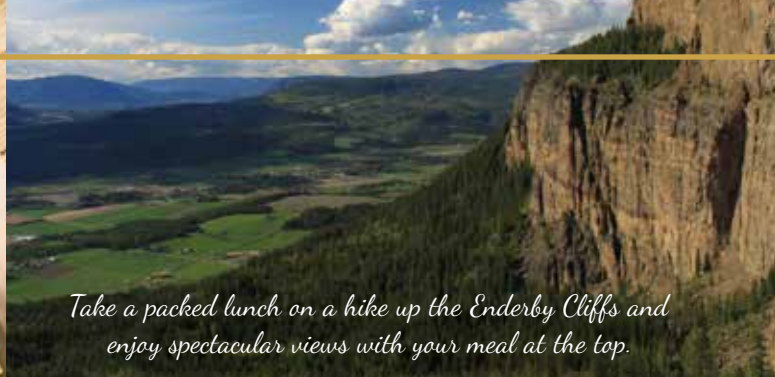
VINECO

Featuring the full line of
Vineco products

Find us on



enderby DINING



Take a packed lunch on a hike up the Enderby Cliffs and enjoy spectacular views with your meal at the top.

Where to Eat in Enderby

Be sure to check www.exploringenderby.com for more member listings.

Eat in or Take out

D & E Diner

604 George Street
250.838.7607

Cheecha's Pizza

802 George Street
250.838.7667

Sutherland's Pizzeria

1701 George Street
250.838.7234

Mel's Mainstreet Pizza

605 Cliff Avenue
250.838.6710

Fisherman's Direct

125 George Street
250.838.5951

Subway

802 George Street
250.838.9876

Lucky Gardens

612 Cliff Avenue
250.838.9223

Licensed

Fortunes Landing Pub

1510 George Street
250.838.6825

The Legion

909 Belvedere Street
250.838.7283

Bull Pen Bar & Grill

707 Cliff Avenue
250.838.7100

Riverfront Pub

Grindrod
250.838.7261

Kaze Japanese

1004 Belvedere Street
250.838.2555

Licensed

Lorenzo's Cafe

Ashton Creek
250.838.6700

Mabel Lake

Golf Course
250.838.0881

Cafes

Tim Hortons

Highway 97A
250.838.6625

Hungry Jacks

602 Cliff Avenue
250.838.6811

Little City Merchant

610 Cliff Avenue
250-838-6830

The Cliff's Bistro

707 George Street
778.443.4417

Country Coffee House

908 Belvedere Street
250.838.0181



Red Basket Foods

Full Service Grocery



Fresh Meat
Department

In-store Bakery

Produce
and Fruit

Deli

Visit our website for weekly ad specials
www.agfoods.com

Open 8 a.m. - 8 p.m. Every Day
Thank you for supporting local businesses!

1006 Hwy 97A, Enderby, 250-838-6064
Next to the Credit Union

Air Conditioned Rooms • Conference Centre
Outdoor Pool & Patio • Pets Welcome • Wifi



BOOK ONLINE OR BY PHONE 250-838-6825

reservations@hojoenderby.com

www.enderbybc.com

RESTAURANT • PUB • LIQUOR STORE



DINING



dining

A TASTE OF ENDERBY

Dining

Enderby provides many opportunities for a casual meal with family or friends. Take a packed lunch on a hike up the Enderby Cliffs and enjoy spectacular views with your meal at the top. Put down a blanket for a picnic at the beach at Tuey Park or spread out your lunch on one of the concrete picnic tables alongside the Shuswap River at Belvidere Park. You can even gather up the fixings for lunch at one of our local farmers' markets or you can taste local fare at one of our summer festivals.



Field to Plate: Many local restaurants emphasize local food in their menus and daily specials.

You'll find everything from a burger and fries to sushi and sake in Enderby. Dine casually on soup and salad, experience a taste of Korean cuisine, grab a quick pizza, stop for a milkshake, or go out to the local pub for an evening of food and drink – it is all on the menu when you are in Enderby.



Sutherland's Bakery & CONVENIENCE STORE




Get Fresh

- Coffee & Muffins
- Doughnuts
- Fresh Bread & Buns
- Deli-Fresh Subs

Ice Cream & Pizza Shop

OPEN YEAR ROUND



OPEN

7 Days a Week

• GTI Petroleum / Gas & Diesel

• Premium Boat & Snowmobile Fuel

HWY 97A, Enderby BC • 250-838-7234



OPEN 7 DAYS A WEEK

8AM - 8PM

Open to 9pm JULY & AUGUST

Fresh Bakery • Deli
Meat • Produce • Bulk Food

www.marketplaceiga.com

606 Russell Avenue • 250-838-7250



North Okanagan Smile Design Centre

Dr. Garfield Kirchner
and dental team



...are pleased to offer a wide range of treatments including family general, cosmetic, implant, periodontal & surgical dentistry.

New patients are welcome.

We are located at
513 Mill Ave., Enderby, BC
250-838-6675
www.northokanagansmiledesign.ca

accommodations

HOTELS / B&Bs

Enderby Lodge
1100 George Street
Enderby 250-838-5858

Howard Johnson Inn
1510 George St.
250-838-6825
www.enderbybc.com

Mabel Lake Farms
33 Kingfisher Rd.
Enderby / Kingfisher
250-838-6248
www.mabellakefarms.com

Mara Cottage B&B & Mara Camping & RV
7704 Hwy 97A, Mara
250-838-6362
www.maracottagebb.com

Our Place on Mara
8536 Hwy 97A, Mara
250-838-6853
www.ourplace.bc.ca

Sleep Right Inn
613 King Ave. Enderby
250-838-9394

**The Bull Pen Bar & Grill/
Enderby Inn**
707 Cliff Ave.
250-838-7100
www.enderbyinn.com

The Inn at the Ninth Hole
5091 20th Ave. SE
Salmon Arm
1-800-221-5955
250-833-0185
www.ninthhol.com

The Treehouse B&B at J♥Y
34 Twin Lakes Rd.
Enderby
250-803-1755



The **Treehouse B&B** at



We're on Facebook
facebook.com/Enderby.Treehouse



A place to be a kid again! For more info or booking email:
Enderby.Treehouse@gmail.com or phone 250-803-1755



Riverside
RV PARK AND CAMPGROUND

Open
Year-Round



THE NATURAL PLACE TO STAY IN ENDERBY

Nestled along the banks of the Shuswap River and just footsteps from downtown Enderby, our RV Park gives guests the beauty of nature and all the amenities of a vibrant and welcoming community.



Tenting • Pull-thru Sites • Full Hook-ups
Covered Kitchen & BBQ • WIFI
Boat Launch • Fire Pits • Picnic Areas
Washrooms • Free Showers • Sani-dump
Adjacent Playground • Pets (on leash)

FOLLOW US



#enderbycamping

112 Kildonan Avenue, Enderby, BC
Phone: 250-838-0155 | Toll Free: 1-855-253-2350

Email: riversidepark@enderby.com

www.enderbycamping.com

accommodations

CAMPING & RESORTS



Club Mara Resort
8242 Hwy 97A, Mara
250-838-6226
www.clubmararesort.com

Cooke Creek Campground
26km East on
Enderby/Mabel Lake Rd.
www.sitesandtrailsbc.ca

Hidden Lake Family Camping
Hidden Lake Rd.
exploringenderby.com
(not to be confused with
hiddenlake.com)

Little Green Ranch
920 Hwy 97A, Mara
250-838-5500 250-803-1864
h.dgreen@telus.net

Mabel Lake Farms
33 Kingfisher Rd.
Enderby / Kingfisher
250-838-6248
www.mabellakefarms.com

Mabel Lake Resort
3514 Mabel Lake Rd.
250-838-6234
www.mabellake.com

Quilakwa RV & Campground
20 Enderby/Grindrod Rd.
250-838-2022
www.quilakwarvpark.ca

Riverside RV Park
112 Kildonan Ave.
Enderby
250-838-0155
www.enderbycamping.com

Shuswap Falls RV Resort
2202 Mabel Lake Rd.
250-838-6100
www.shuswapfallsrvresort.com

Whispering Pines Tent & RV Park
11 Hamilton Rd, Mara
250-838-6775
www.whisperingpinesrv.com

Willow Shores Resort
8216 Hwy. 97A, Mara
250-838-6216
www.willowshoresresort.com



Shuswap Falls RV Resort

Situated along the Shuswap River, 20 MINUTES EAST OF ENDERBY

Canoeing, kayaking, rafting,
tubing, fishing & swimming
... all on the Shuswap River!

*The ultimate family
vacation spot!*



RV LOTS FOR SALE AND RENT

Playground • Pool • Fire Pits
Free Showers • Laundry Facilities
Fully Serviced Sites • Dog-Friendly Park

shuswapfallsrvresort.com • 2202 Mabel Lake Rd • 250-838-6100 • sfrvc@telus.net

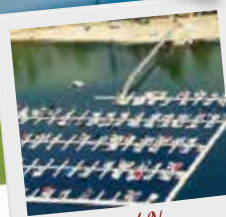
The North Okanagan's Best Kept Secret

Mabellake.com

Your Family Vacation Centre



*Premiere Golf Experience
Les Furber designed*



*Brand New
260 Slip Marina*



*Licensed Clubhouse
and Patio*



*Crystal Clear Water
26 miles long & 2 miles wide*

Mabel Lake Golf & Country Club

- Les Furber designed 9-Hole Golf Course
- Par 36 Regulation • Pro Shop
- Licensed Clubhouse & Patio
- Restaurant • Everyone Welcome

3445 Enderby Mabel Lake Rd

Tee Times & Inquiries

call 250-838-0881

Mabel Lake Resort & Airpark

- 90 RV Sites, Cabins, Houses & RV Rentals
- Brand New Marina
- Pontoon & Fishing Boat Rentals
- Boat Gas • Liquor Store
- Convenience Store • Beach Cafe
- Kids Playground • Swimming Area

3514 Enderby Mabel Lake Rd

For Reservations call 250-838-6234



Keep in touch!



**Full Hook-Up RV Sites
Cabins & Houses PLUS
2 Nine Hole Golf Passes**

**FROM
\$60**



Stop 'N' Shop

**OPEN 7 DAYS
A WEEK**

**BUSES
WELCOME**

RV PARKING

**Award Winning
Building**



Native Gift Shop

Large selection of moccasins, clothing & local art

Convenience Store • Lottery • ATM

Huge Selection Fireworks

GAS, PROPANE & DIESEL

FULL SERVICE AT SELF SERVE PRICES



Highway 97A, Enderby
corner of Canyon Rd & Hwy 97A
250-838-9422