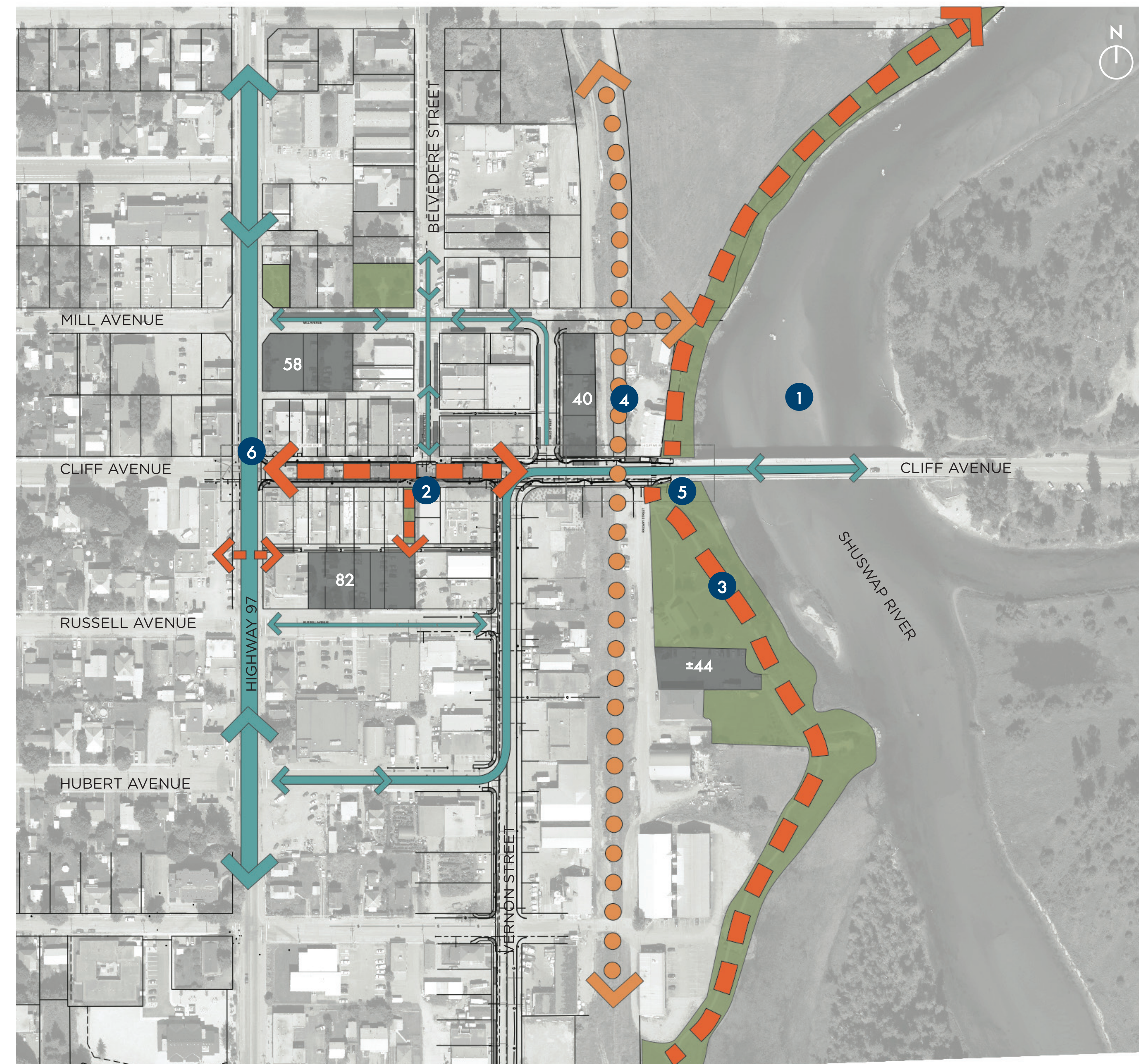


2

PROJECT OVERVIEW

SITE ANALYSIS



LEGEND

- Existing Park Space
- Existing City-Owned Public Parking With Number Of Stalls
- Existing Pedestrian Route
- Potential Pedestrian Route
- Existing Vehicle Traffic

EXISTING ASSETS & OPPORTUNITIES

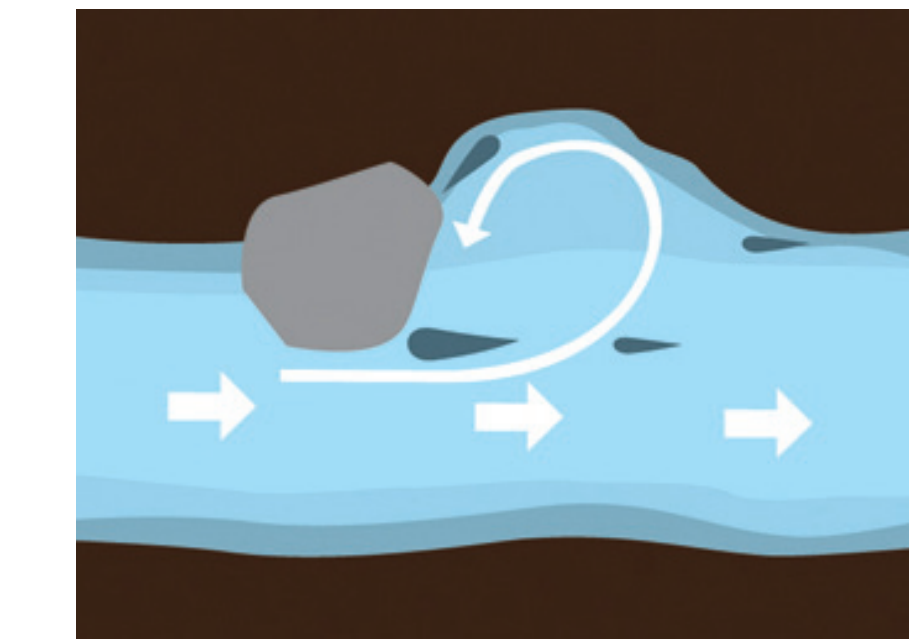
- 1 Shuswap River as recreational amenity and tourism generator
Historic and compact downtown is attractive and walkable
- 2 Library landmark building and central positioning for plaza
- 3 River Walk and Belvidere Park connect to Cliff Avenue
- 4 Railway right-of-way has multi-use transportation potential
Pedestrian-oriented main street is ideal for community events and celebrations

CONSTRAINTS

- 5 River Walk is interrupted by Cliff Avenue bridge ramp
- 6 Lack of visual presence or identity at Highway 97 and Cliff Avenue intersection

DESIGN PRIORITIES

CELEBRATING THE RIVER

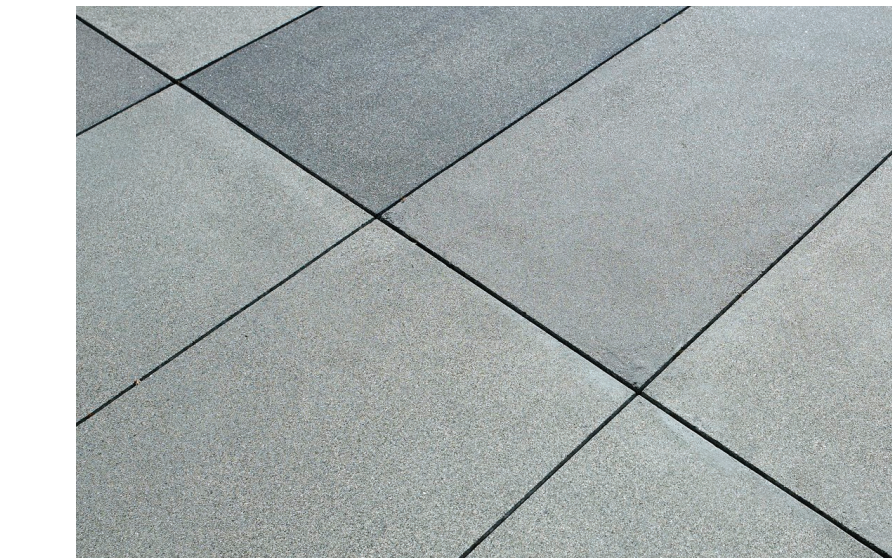


River movement and eddies

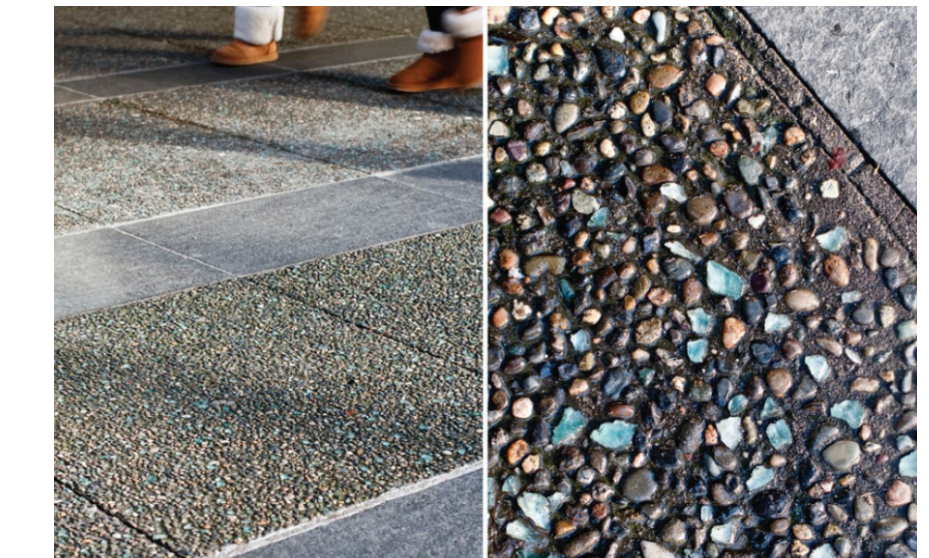


Shuswap River

USING QUALITY, COST-EFFECTIVE MATERIALS



Cast in place concrete



Exposed aggregate

SUPPORTING VIBRANT STREET ACTIVITIES



Community events



Outdoor markets

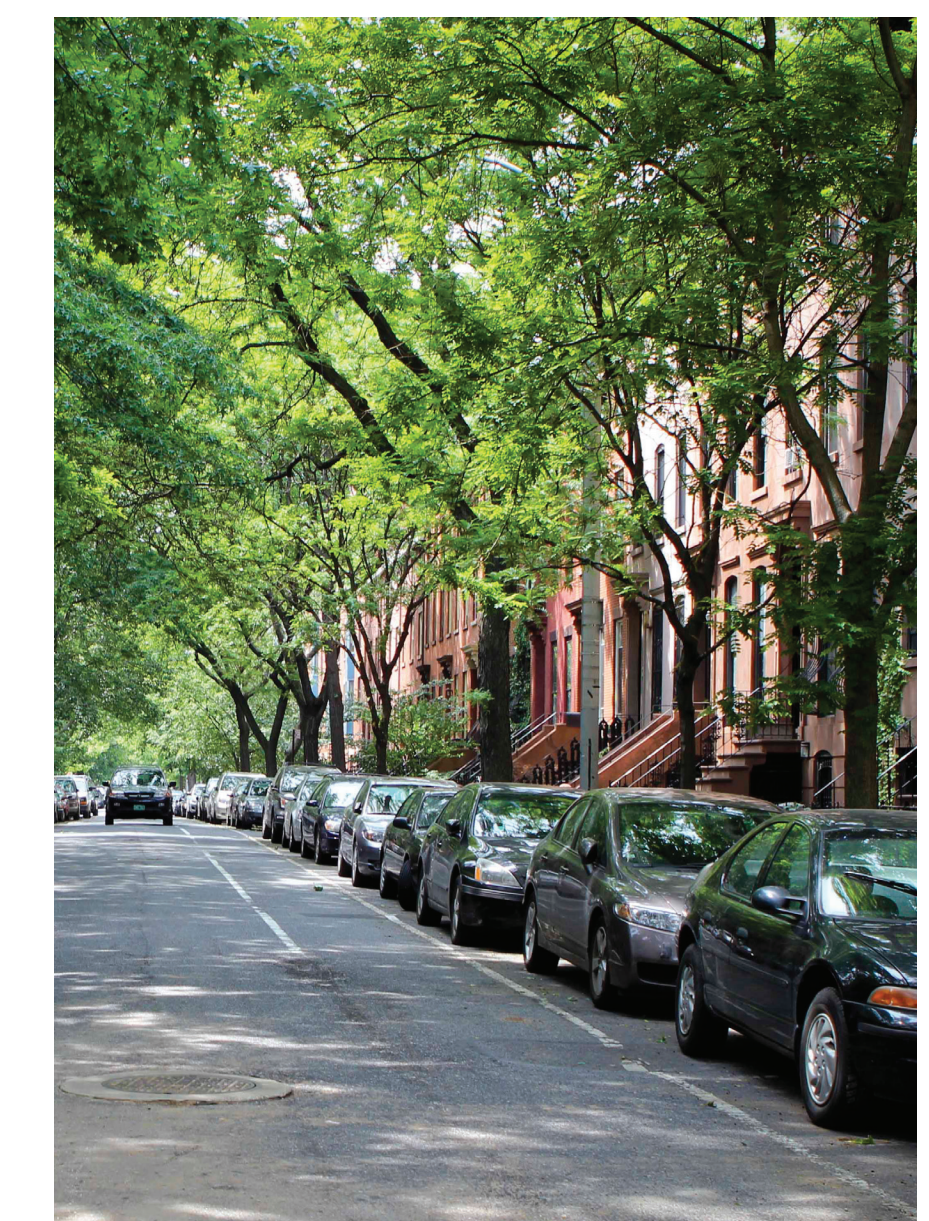
INCORPORATING RAIN GARDENS AND HEALTHY STREET TREES



Rain garden bumpout



Rain garden plantings



Mature street trees