













362000 363000 364000 365000 366000 367000 368000 369000 370000 371000

Enderby And Area F Parks Master Plan

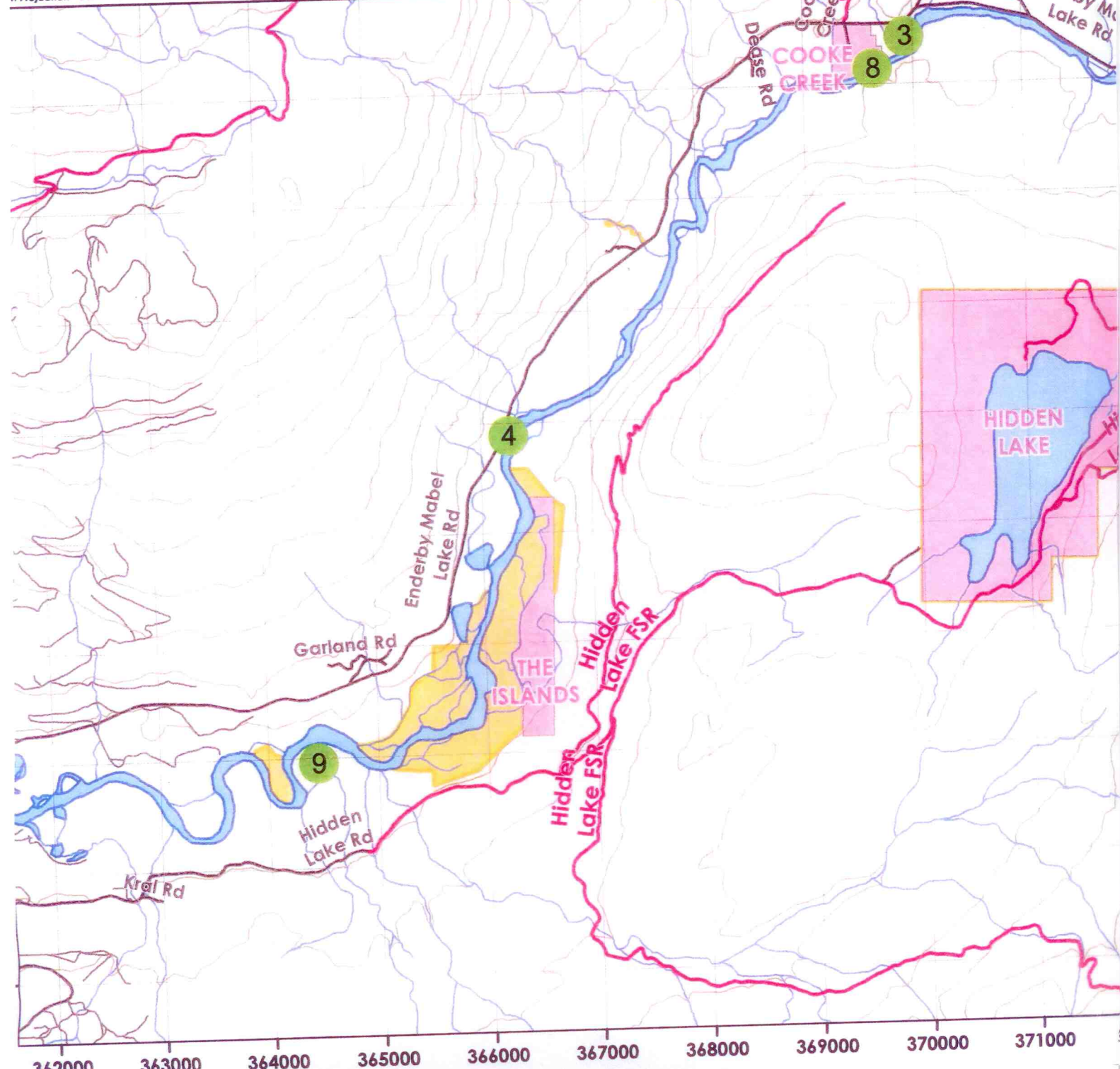
Appendix 8 Map 3 of 3

-  Park Additions, Improvement, or Maintenance
-  Area F
-  Forest Service Road
-  Main Road
-  Secondary Road
-  Railway
-  Index Contour (100m)
-  Lake or River
-  Streams
-  Provincial Park
-  Forestry Rec Site
-  Ecological Reserves

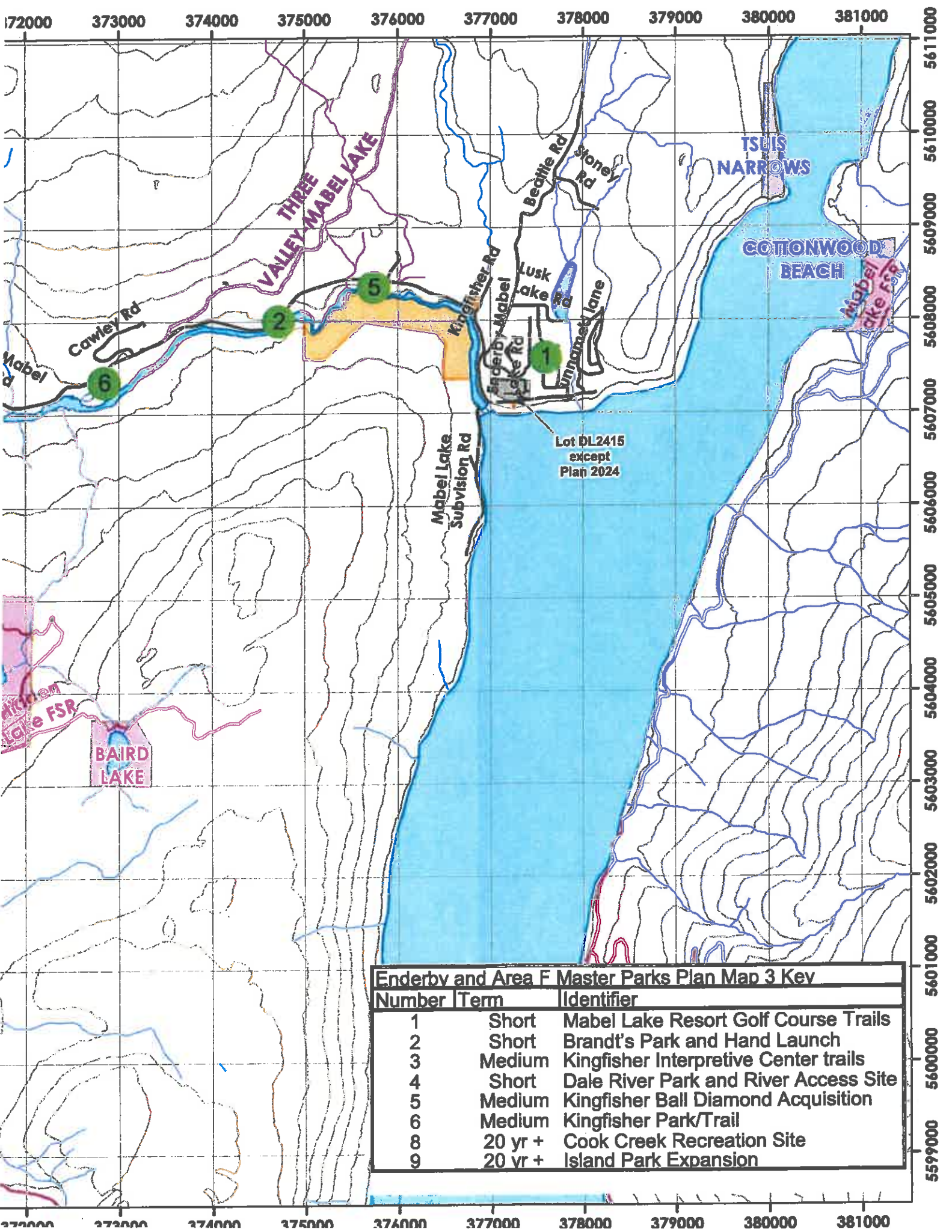
18,713 Kilometers
0.6 1.2 1.8 2.4
1 centimeter = 487 meters

Map Prepared By:
FORSITE
Forest Management Specialists

Map Projection - Zone 11, NAD 83 26 Jan 2011



362000 363000 364000 365000 366000 367000 368000 369000 370000 371000



Enderby and Area F Master Parks Plan Map 3 Key

Number	Term	Identifier
1	Short	Mabel Lake Resort Golf Course Trails
2	Short	Brandt's Park and Hand Launch
3	Medium	Kingfisher Interpretive Center trails
4	Short	Dale River Park and River Access Site
5	Medium	Kingfisher Ball Diamond Acquisition
6	Medium	Kingfisher Park/Trail
8	20 yr +	Cook Creek Recreation Site
9	20 yr +	Island Park Expansion